

640256

Part Baked Malted Wheat Petit Pain

Part Baked Malted Wheat Petit Pain

PRODUCT DESCRIPTION

A malted wheat, part baked roll on average 120mm (approx. 4½") in length. The product has 1 decorative top cut and is supplied frozen for bake off by the customer.

Brand	Lantmannen Unibake
Manufacturer Product Code	7012
Product Type	Food
Product Category	Bakery - General
Storage Type	Frozen
Erudus ID	f8988d9154c248cc99446a79e5023fbc
Specification Type	Legacy



Outer Case GTIN 5037173100324



INGREDIENTS

Ingredient Declaration

WHEAT Flour (with Calcium, Iron, Niacin, Thiamin), Water, Wholemeal WHEAT Flour, WHEAT Bran, Malted WHEAT Flakes (2.9%), Kibbled Malted WHEAT (2.0%), WHEAT Gluten, Yeast, Salt, Malted BARLEY Flour, Flour Treatment Agent (E300).

ALLERGENS

Product Contains:

Celery/Celeriac	No	Mustard	No
Cereals Containing Gluten	Yes	Nuts (Tree)	No
Barley	Yes	Almond nuts	No
Oats	May Contain	Brazil nuts	No
Rye	May Contain	Cashew nuts	No
Wheat (including Spelt and Khorasan)	Yes	Hazelnuts	No
Gluten content <20ppm	No	Macadamia (Queensland) nuts	No
Crustacea	No	Pecan nuts	No
Eggs	No	Pistachio nuts	No
Fish	No	Walnuts	No
Lupin	No	Peanuts	No
Milk	No	Sesame Seeds	May Contain
Molluscs	No	Soybeans	No
		Sulphur Dioxide and Sulphites	No

Risk Source:

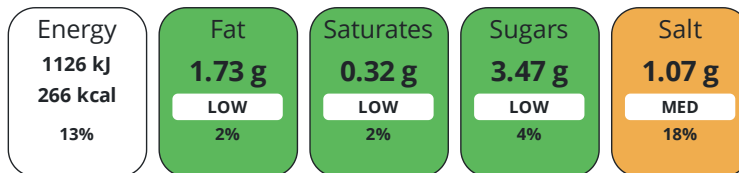
Additional Allergen Information

For allergens, including cereals containing gluten, see ingredients in CAPITALS. May contain sesame seeds.

DIET SUITABILITY

Suitable for Coeliacs	No	Halal Diet	Suitable for
Kosher Diet	No	Vegetarian Diet	Suitable for
Vegan Diet	Suitable for		

Each 100g/ml portion contains:



of your reference intake.

Typical values per 100g/ml : Energy 266kcal / 1126kJ

Nutrient	per 100g/ml	RI per 100g/ml	per 60g/ml serving	RI per 60g/ml serving
Energy (kJ)	1126 kJ	13%	675.6 kJ	8%
Energy (kcal)	266 kcal	13%	159.6 kcal	8%
Fat	1.73 g	2%	1 g	1%
of which Saturates	0.32 g	2%	0.2 g	1%
of which Mono-unsaturates	0.41 g		0.2 g	
of which Polyunsaturates	0.93 g		0.6 g	
Carbohydrate	50.43 g	19%	30.3 g	12%
of which Sugars	3.47 g	4%	2.1 g	2%
Fibre	3.63 g		2.2 g	
Protein	10.33 g	21%	6.2 g	12%
Salt	1.07 g	18%	0.6 g	10%
Sodium	430 mg		258 mg	

Serving Size 60 g

Directions For Use

Baking Instructions - Preheat oven to 200 deg C (gas mark 6). Bake product from frozen for 8 - 10 minutes until golden brown. For ovens with steam injection facility, inject steam for 10 seconds at start of baking.

Storage Instructions

Can be stored until the best before date of stored at -18°C or below. DO NOT REFREEZE ONCE THAWED. Once the rolls have been baked, we recommend that they are consumed within 4 hours.

Product Country of Origin/Place of United Kingdom

Provenance

Additional Origin Details

n/a

CONTACT
INFORMATION

Address

Lantmannen Unibake
Maidstone Road
Kingston
Milton Keynes
MK10 0BD
England

P: (Phone) 07780837112

Complaints Contact

Ursula Jaillet
Technical Coordinator
unibakeuk.technicalservices@lantmannen.com

Technical Contact

Inesa Jegeroviene
Senior Specifications Technologist
inesa.jegeroviene@lantmannen.com

P: (Phone) 07885418956

The information on the [Erudus System](#) has been supplied by the manufacturers of the products and, whilst the owners of the Erudus System take steps to ensure the information is regularly updated, they give no warranty and no guarantee that the information is accurate. Product information and ingredients may change, please always read product labels carefully in addition to using the information provided by Erudus.

We do not accept liability for any inaccuracies or incorrect information contained on this site.
Please visit <http://www.erudus.com/terms-and-conditions> for full terms and conditions.