

640038

# Kara MK5 Floured Bap 6 x 8

Kara Mk5 Floured Bap 6 X 8

## PRODUCT DESCRIPTION

A soft white bread bap dusted with flour and pre-sliced. Excellent for both hot and cold fillings.

<b>Brand</b>	Kara Foodservice (Fletchers)
<b>Manufacturer Product Code</b>	F00270
<b>Product Type</b>	Food
<b>Product Category</b>	Bread and Bread Products
<b>Storage Type</b>	Frozen
<b>Erudus ID</b>	4902d72fd9694e9fa47c67be23edee30
<b>Specification Type</b>	Legacy



**Outer Case GTIN** 05011639002063



## INGREDIENTS

### Ingredient Declaration

**WHEAT** Flour, ( **WHEAT** Flour, Calcium Carbonate, Iron, Niacin & Thiamin), Water, Sugar, Salt, Yeast, Rapeseed Oil, Emulsifiers: E471, E472(e). Flour Treatment Agents: E300, E920.

## ALLERGENS

Product Contains:

<b>Celery/Celeriac</b>	No	<b>Mustard</b>	No
<b>Cereals Containing Gluten</b>	Yes	<b>Nuts (Tree)</b>	No
<b>Barley</b>	No	<b>Almond nuts</b>	No
<b>Oats</b>	No	<b>Brazil nuts</b>	No
<b>Rye</b>	No	<b>Cashew nuts</b>	No
<b>Wheat (including Spelt and Khorasan)</b>	Yes	<b>Hazelnuts</b>	No
<b>Gluten content &lt;20ppm</b>	No	<b>Macadamia (Queensland) nuts</b>	No
<b>Crustacea</b>	No	<b>Pecan nuts</b>	No
<b>Eggs</b>	No	<b>Pistachio nuts</b>	No
<b>Fish</b>	No	<b>Walnuts</b>	No
<b>Lupin</b>	No	<b>Peanuts</b>	No
<b>Milk</b>	No	<b>Sesame Seeds</b>	May Contain
<b>Molluscs</b>	No	<b>Soybeans</b>	No
		<b>Sulphur Dioxide and Sulphites</b>	No

Risk Source:

### Additional Allergen Information

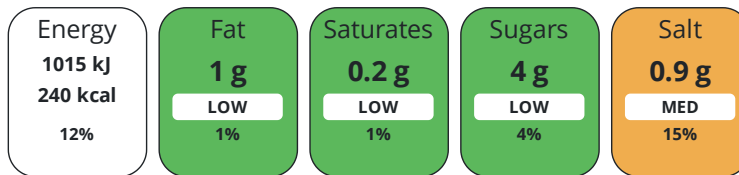
For allergens, including cereals containing Gluten, see ingredients in CAPITALS May contain SESAME SEED

## DIET SUITABILITY

<b>Suitable for Coeliacs</b>	No	<b>Halal Diet</b>	No
<b>Kosher Diet</b>	No	<b>Vegetarian Diet</b>	Suitable for
<b>Vegan Diet</b>	Suitable for		

NUTRITIONAL  
INFORMATION

Each 100g/ml portion contains:



of your reference intake.

Typical values per 100g/ml : Energy 240kcal / 1015kJ

Nutrient	per 100g/ml	RI per 100g/ml	per 86g/ml serving	RI per 86g/ml serving
Energy (kJ)	1015 kJ	12%	872.9 kJ	10%
Energy (kcal)	240 kcal	12%	206.4 kcal	10%
Fat	1 g	1%	0.9 g	1%
of which Saturates	0.2 g	1%	0.2 g	1%
Carbohydrate	47 g	18%	40.4 g	16%
of which Sugars	4 g	4%	3.4 g	4%
Fibre	3 g		2.6 g	
Protein	9 g	18%	7.7 g	15%
Salt	0.9 g	15%	0.8 g	13%
Sodium	372 mg		319.9 mg	
<b>Serving Size</b>	86 g			

HANDLING &  
STORAGE  
INFORMATION

**Directions For Use**

Defrost thoroughly before use. Remove from case and leave in bag at room temperature for 1 – 2 hours, or until fully defrosted. Once defrosted, store in a sealed pack in a cool, dry place away from direct sunlight. Once defrosted use within 4 days Do not refreeze. Product can be toasted or warmed in an oven before serving.

**Storage Instructions**

Keep frozen, store frozen at -18°C (0°F) or below. Once defrosted do not refreeze.

ORIGIN

**Product Country of Origin/Place of** United Kingdom

**Provenance**

**Additional Origin Details**

N/A

Address

Kara Foodservice (Fletchers)

Park Seventeen

Moss Lane

Whitefield

Manchester

M45 8FJ

England

P: (Phone) 0161 766 7471

CONTACT  
INFORMATION

The information on the [Erudus System](#) has been supplied by the manufacturers of the products and, whilst the owners of the Erudus System take steps to ensure the information is regularly updated, they give no warranty and no guarantee that the information is accurate. Product information and ingredients may change, please always read product labels carefully in addition to using the information provided by Erudus.

We do not accept liability for any inaccuracies or incorrect information contained on this site.  
Please visit <http://www.erudus.com/terms-and-conditions> for full terms and conditions.