

Changed Feb 06, 2025 15:34

Reviewed Feb 06, 2025 15:34

Erudus ID 3c68fae69d8c43e4966120be37c96243

Version 2.0



# A15805 – Tuna Chunks in Brine Pouch 10 x 1020g

A15805 – Tuna Chunks In Brine Pouch 10 X 1020g 10x1x1.02g

## PRODUCT DESCRIPTION

TUNA CHUNKS IN BRINE

Brand	Martin Mathew & Co Ltd
Manufacturer Product Code	A15805
Product Type	Food
Product Category	Other
Storage Type	Ambient
Erudus ID	3c68fae69d8c43e4966120be37c96243
Specification Type	Generic
Inner Component GTIN	5017482001291
Manufacturer Component Code	A15805
Inner Pack Product Code	A15805
Outer Case GTIN	15017482001298



## INGREDIENTS

### Ingredient Declaration

Tuna Chunks (FISH) Water, Salt

### Ingredient Statements

Tuna Chunks (FISH) Water, Salt contains Fish

## ALLERGENS

Product Contains:

Celery/Celeriac	No	Mustard	No
Cereals Containing Gluten	No	Nuts (Tree)	No
Barley	No	Almond nuts	No
Oats	No	Brazil nuts	No
Rye	No	Cashew nuts	No
Wheat (including Spelt and Khorasan)	No	Hazelnuts	No
Crustacea	No	Macadamia (Queensland) nuts	No
Eggs	No	Pecan nuts	No
Fish	Yes	Pistachio nuts	No
Lupin	No	Walnuts	No
Milk	No	Peanuts	No
Molluscs	No	Sesame Seeds	No
		Soybeans	No
		Sulphur Dioxide and Sulphites	No

### Allergen Statement On Pack

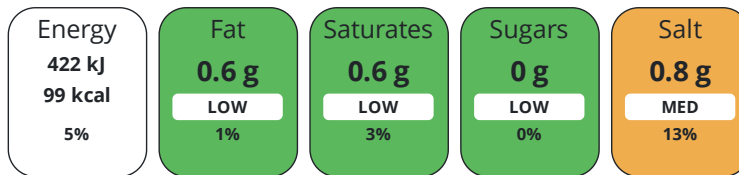
contains FISH

## DIET SUITABILITY

Vegan Diet	No	Vegetarian Diet	No
Halal Diet	No	Kosher Diet	No

NUTRITIONAL  
INFORMATION

Each 100g/ml portion contains:



of your reference intake.

Typical values per 100g/ml : Energy 99kcal / 422kj

Nutrient	per 100g	RI per 100g	per 60g serving	RI per 60g serving
Energy (kJ)	422 kJ	5%	253.2 kJ	3%
Energy (kcal)	99 kcal	5%	59.4 kcal	3%
Fat	0.6 g	1%	0.4 g	1%
of which Saturates	0.6 g	3%	0.4 g	2%
Carbohydrate	0 g	0%	-	
of which Sugars	0 g	0%	-	
Fibre	0 g		-	
Protein	23.5 g	47%	14.1 g	28%
Salt	0.8 g	13%	0.5 g	8%

Serving Size	60 g
Serving Size Description	60g portion drained
Number of Servings	17 Servings

**Source of Nutritional Information** Calculation from known/accepted datasets

HANDLING &  
STORAGE  
INFORMATION

**Directions For Use**

Ready to eat

**Storage Instructions**

Ambient

**Storage Instructions After Opening**

Once opened store in a suitable container and use within 2 days

ORIGIN

**Product Country of Origin/Place of Provenance** Ghana

MARKETING  
INFORMATION

**Marketing Description**

TUNA CHUNKS IN BRINE

CONTACT  
INFORMATION

**Address**

Martin Mathew & Co Ltd  
50a St Andrew Street  
Hertford  
Herts  
SG14 1JA  
United Kingdom

**P: (Phone)** 01992641641

The information on the [Erudus System](#) has been supplied by the manufacturers of the products and, whilst the owners of the Erudus System take steps to ensure the information is regularly updated, they give no warranty and no guarantee that the information is accurate. Product information and ingredients may change, please always read product labels carefully in addition to using the information provided by Erudus.

We do not accept liability for any inaccuracies or incorrect information contained on this site.  
Please visit <http://www.erudus.com/terms-and-conditions> for full terms and conditions.