

440039

Mini Tear Drop Naan 65g (1 x 40)

Mini Tear Drop Naan 65g (1 X 40)

PRODUCT DESCRIPTION

Fully baked, teardrop-shaped naan bread with kalonji (black onion) seeds. Approx. 6.5" long x 5.5" wide each. Packed 8 x 5. Suitable for vegetarians and vegans. (1 x 40)

Brand	Central Foods Group Limited
Manufacturer Product Code	BFL5270V
Product Type	Food
Product Category	Bread and Bread Products
Storage Type	Frozen
Erudus ID	7d2c568cf7f3429595d42b30fab02341
Specification Type	Legacy



Outer Case GTIN 5022558000856



INGREDIENTS

Ingredient Declaration

Fortified **WHEAT** Flour (Calcium Carbonate, Niacin, Iron, Thiamin), Water, Rapeseed Oil, Raising Agents (Monocalcium Phosphate, Sodium Bicarbonate), Yeast, Salt, Kalonji Seeds.

ALLERGENS

Product Contains:

Celery/Celeriac	No	Mustard	No
Cereals Containing Gluten	Yes	Nuts (Tree)	No
Barley	No	Almond nuts	No
Oats	No	Brazil nuts	No
Rye	No	Cashew nuts	No
Wheat (including Spelt and Khorasan)	Yes	Hazelnuts	No
Gluten content <20ppm	No	Macadamia (Queensland) nuts	No
Crustacea	No	Pecan nuts	No
Eggs	No	Pistachio nuts	No
Fish	No	Walnuts	No
Lupin	No	Peanuts	No
Milk	No	Sesame Seeds	No
Molluscs	No	Soybeans	No
		Sulphur Dioxide and Sulphites	No

Additional Allergen Information

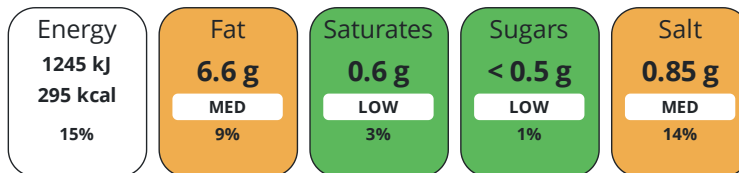
For allergens, including cereals containing gluten see ingredients in CAPITALS

DIET SUITABILITY

Suitable for Coeliacs	No	Halal Diet	No
Kosher Diet	No	Vegetarian Diet	Suitable for
Vegan Diet	Suitable for		

NUTRITIONAL
INFORMATION

Each 100g/ml portion contains:



of your reference intake.

Typical values per 100g/ml : Energy 295kcal / 1245kJ

Nutrient	per 100g/ml	RI per 100g/ml	per 65g/ml serving	RI per 65g/ml serving
Energy (kJ)	1245 kJ	15%	809.3 kJ	10%
Energy (kcal)	295 kcal	15%	191.8 kcal	10%
Fat	6.6 g	9%	4.3 g	6%
of which Saturates	0.6 g	3%	0.4 g	2%
Carbohydrate	50.7 g	20%	33 g	13%
of which Sugars	< 0.5 g	1%	0.3 g	0%
Fibre	2.2 g		1.4 g	
Protein	7.3 g	15%	4.7 g	9%
Salt	0.85 g	14%	0.6 g	10%
Sodium	340 mg		221 mg	
Serving Size	65 g			

HANDLING &
STORAGE
INFORMATION

Directions For Use

From Frozen unless otherwise stated Oven: Remove all packaging and sprinkle lightly with water. Place directly on the oven rack in a preheated oven at 200°C/Gas Mark 6 for 4-5 minutes. Shelf life once defrosted: Consume within 24 hours.

Storage Instructions

Keep Frozen. Store at -18°C or below

ORIGIN

Product Country of Origin/Place of United Kingdom

Provenance

Additional Origin Details

United Kingdom

CONTACT
INFORMATION

Address

Central Foods Group Limited
Maple Court
Ash Lane
Collingtree
Northamptonshire
NN4 0NB
England

P: (Phone) 01604 858 522

Complaints Contact

Karen Wright
Customer Care Admin Assistant
kwright@centralfoods.co.uk

P: (Phone) 01604 878 299

Technical Contact

Chris Stobart
Technical Manager
technical@centralfoods.co.uk

P: (Phone) 01604 878 276

Commercial Contact

Oliver Sampson
Managing Director
osampson@centralfoods.co.uk

P: (Phone) 07715 073 273

The information on the [Erudus System](#) has been supplied by the manufacturers of the products and, whilst the owners of the Erudus System take steps to ensure the information is regularly updated, they give no warranty and no guarantee that the information is accurate. Product information and ingredients may change, please always read product labels carefully in addition to using the information provided by Erudus.

We do not accept liability for any inaccuracies or incorrect information contained on this site.
Please visit <http://www.erudus.com/terms-and-conditions> for full terms and conditions.