

Changed Apr 04, 2024 12:32

Reviewed Apr 04, 2024 12:32

Erudus ID 6f4793c644a44dc691f191eb3c47e93c

Version 4.0

10411

3981 Pretzel Bun, Ready Baked, Deep Frozen, with cut (web-cut)

Ditsch Ready Sliced Pretzel Burger Bun With Two Parallel Top Cuts 2x21x80g

PRODUCT DESCRIPTION

Ready baked, ready sliced, pretzel roll with two parallel lines on top, frozen, thaw and serve

Brand	Ditsch
Manufacturer Product Code	5701
Manufacturer Version	30.03.2023
Number	
Product Type	Food
Product Category	Bread Buns & Rolls
Storage Type	Frozen
Erudus ID	6f4793c644a44dc691f191eb3c47e93c
Specification Type	Bakery Products



Outer Case GTIN 4005975057017



INGREDIENTS

Ingredient Declaration

WHEAT flour, water, rapeseed oil, yeast, fermented **WHEAT** flour, salt, **WHEAT** malt flour, **WHEAT** gluten, flour treatment agent (ascorbic acid), coating agent (acidity regulator, sodium hydroxide).

ALLERGENS

Product Contains:

Celery/Celериac	No	Mustard	No
Cereals Containing Gluten	Yes	Nuts (Tree)	No
Barley	No	Almond nuts	No
Oats	No	Brazil nuts	No
Rye	No	Cashew nuts	No
Wheat (including Spelt and Khorasan)	Yes	Hazelnuts	No
Crustacea	No	Macadamia (Queensland) nuts	No
Eggs	No	Pecan nuts	No
Fish	No	Pistachio nuts	No
Lupin	No	Walnuts	No
Milk	May Contain	Peanuts	No
Molluscs	No	Sesame Seeds	No
		Soybeans	No
		Sulphur Dioxide and Sulphites	No

Risk Source:

Milk (Risk Source)	Line
---------------------------	------

SUPPLEMENTARY
INGREDIENT
INFORMATION

Palm Oil	No
Hydrogenated Vegetable Oil/Fat	No
GM Protein/DNA	No

ADDITIVES

Product Contains:

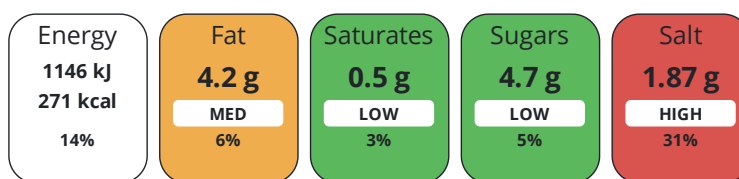
Artificial Antioxidants	No	Artificial Flavourings	No
Artificial Colours	No	Artificial Preservatives	No
Artificial Flavour Enhancers	No	Artificial Sweeteners	No

DIET
SUITABILITY

Vegan Diet	Suitable for	Vegetarian Diet	Suitable for
Halal Diet	No	Kosher Diet	No

NUTRITIONAL
INFORMATION

Each 100g/ml portion contains:



of your reference intake.

Typical values per 100g/ml : Energy 271kcal / 1146kj

Nutrient	per 100g	RI per 100g	per 80g serving	RI per 80g serving
Energy (kJ)	1146 kJ	14%	916.8 kJ	11%
Energy (kcal)	271 kcal	14%	216.8 kcal	11%
Fat	4.2 g	6%	3.4 g	5%
of which Saturates	0.5 g	3%	0.4 g	2%
Carbohydrate	47.4 g	18%	37.9 g	15%
of which Sugars	4.7 g	5%	3.8 g	4%
Fibre	2.9 g		2.3 g	
Protein	9.5 g	19%	7.6 g	15%
Salt	1.87 g	31%	1.5 g	25%
Sodium	748 mg		598.4 mg	

Serving Size	80 g
Serving Size Description	One roll

SUPPLEMENTARY
NUTRITIONAL
INFORMATION

Fibre Type	Fibre Unknown
-------------------	---------------

HFSS (HIGH IN
FAT, SALT AND
SUGAR)

HFSS Status	Yes
HFSS Score	9

HANDLING &
STORAGE
INFORMATION

Directions For Use

Thaw Pretzel Bun for approx. 90 minutes and serve.

Storage Instructions

To be kept frozen at -18°C

Shelf Life from Time of Production	360 Days	Exempt From Shelf Life Labelling	No
Shelf Life Once Defrosted	1 Days		

ACCREDITATIONS/
CERTIFICATIONS/
ASSURANCE
SCHEMES

BRCGS Certified		BRCGS Food Safety	
IFS Food Standard		Sedex	

ORIGIN	Product Country of Origin/Place of Provenance		Germany				
PRODUCT CHARACTERISTICS	Standards Testing						
	Do you undertake trend analysis of microbiological results?	No	Is shelf life testing undertaken?		No		
CONFIGURATION	HAZARD CONTROLS						
	Metal Detection	Yes					
	Case Configuration			Inner Pack Configuration			
	Variable Inner Components in Outer Case	No	Is Inner Pack Splittable?		No		
	Total Quantity of Inner Components in Outer Case	42 Units	Quantity of Inner Components in Inner Pack		21		
PRODUCT WEIGHTS	Case						
	Total Quantity of Inner Packs in Outer Case	2 Units					
	Is the Outer Case Splittable?	No					
	Inner Component			Inner Pack			
	Variable Weight Consumer Item	No	Inner Pack Gross Weight		1.68 kg		
PRODUCT DIMENSIONS	Outer Case						
	Inner Component Weight	80 g					
	Outer Case Gross Weight	3.82 kg					
	Outer Case Net Weight	3.36 kg					
	Inner Component						
	Inner Component Depth	0 mm					
	Inner Component Width	0 mm					
PALLET INFORMATION	Outer Case						
	Inner Component Height	0 mm					
	Outer Case Depth	398 mm					
	Outer Case Width	298 mm					
	Outer Case Height	261 mm					
	Quantity of Cases Per Pallet Layer	10 Cases	Pallet Height		1.72 MTR		
Quantity of Layers Per Pallet	6 Layers	Pallet Gross Weight		239 kg			
PACKAGING	Quantity of Cases Per Pallet			60 Cases			
	Inner Pack Packaging						
	Type	Materials	Weight	Recycled Plastic %	Recyclable	Returnable	Composite
	Bag	Plastic / LDPE (Low Density Polyethylene)	44 g	0 %	No	No	No
	Outer Case Packaging						
	Type	Materials	Weight	Recycled Plastic %	Recyclable	Returnable	Composite
	Case	Paper/Cardboard / Corrugated	448 g	- %	Yes	No	No

Transport Packaging

Type	Materials	Weight	Recycled Plastic %	Recyclable	Returnable	Composite
Pallet Wrap	Plastic / PE (Polyethylene)	500 g	0 %	No	No	No
Pallet	Wood	25000 g	- %	Yes	No	No

OTHER INFORMATION

Commodity Code 19059080

CONTACT INFORMATION

Address

WorldBake
 Timsons Business Centre
 Bath Road
 Kettering
 Northamptonshire
 NN16 8NQ
 England

P: (Phone) 01536419900

Complaints Contact

Annabel Clayton
 Technical Manager
 technical@worldbake.com

P: (Phone) 07300216340

Technical Contact

Annabel Clayton
 Technical Manager
 technical@worldbake.com

P: (Phone) 07300216340

The information on the [Erudus System](#) has been supplied by the manufacturers of the products and, whilst the owners of the Erudus System take steps to ensure the information is regularly updated, they give no warranty and no guarantee that the information is accurate. Product information and ingredients may change, please always read product labels carefully in addition to using the information provided by Erudus.

We do not accept liability for any inaccuracies or incorrect information contained on this site.
 Please visit <http://www.erudus.com/terms-and-conditions> for full terms and conditions.