

780068

# Pain au Chocolat

Pain Au Chocolat

## PRODUCT DESCRIPTION

A rich, buttery croissant dough with a light open texture and crisp outer layers, filled with Belgian chocolate. Product Supplied frozen.

<b>Brand</b>	Lantmannen Unibake
<b>Manufacturer Product Code</b>	5790088190 (EG19)
<b>Product Type</b>	Food
<b>Product Category</b>	Bakery - General
<b>Storage Type</b>	Frozen
<b>Erudus ID</b>	5f133cc6519f4d37a9e2e5b5b7955578
<b>Specification Type</b>	Legacy



**Outer Case GTIN** 05413056008497



## INGREDIENTS

### Ingredient Declaration

Dough: **WHEAT** Flour (**WHEAT** Gluten), Butter (**MILK**) (17.8%), Water, Yeast, Sugar, Salt, Baking Improver (**WHEAT** Gluten, **WHEAT** Flour, Flour Treatment Agent (Ascorbic Acid E300)), **EGG**. Chocolate Filling: (15.6%) (41% Cocoa Solids) (Sugar, Cocoa Mass, Cocoa Butter, Whole **MILK** Powder, Whey Powder (**MILK**), Skimmed **MILK** Powder, Emulsifier (**SOYA** Lecithin E322)). Topping: **EGG** Wash.

## ALLERGENS

Product Contains:

<b>Celery/Celery</b>	No	<b>Mustard</b>	No
<b>Cereals Containing Gluten</b>	Yes	<b>Nuts (Tree)</b>	May Contain
<b>Barley</b>	No	<b>Almond nuts</b>	May Contain
<b>Oats</b>	No	<b>Brazil nuts</b>	No
<b>Rye</b>	No	<b>Cashew nuts</b>	No
<b>Wheat (including Spelt and Khorasan)</b>	Yes	<b>Hazelnuts</b>	May Contain
<b>Gluten content &lt;20ppm</b>	No	<b>Macadamia (Queensland) nuts</b>	No
<b>Crustacea</b>	No	<b>Pecan nuts</b>	No
<b>Eggs</b>	Yes	<b>Pistachio nuts</b>	No
<b>Fish</b>	No	<b>Walnuts</b>	No
<b>Lupin</b>	No	<b>Peanuts</b>	No
<b>Milk</b>	Yes	<b>Sesame Seeds</b>	No
<b>Molluscs</b>	No	<b>Soybeans</b>	Yes
		<b>Sulphur Dioxide and Sulphites</b>	No

Risk Source:

### Additional Allergen Information

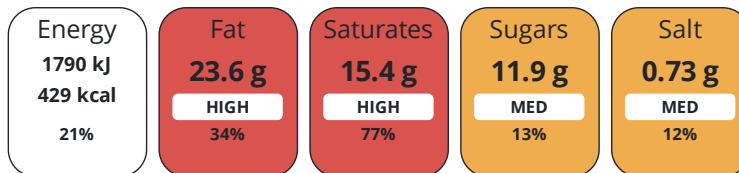
For allergens, including cereals containing gluten, see ingredients in capitals. May also contain traces of nuts.

## DIET SUITABILITY

<b>Suitable for Coeliacs</b>	No	<b>Halal Diet</b>	Suitable for
<b>Kosher Diet</b>	No	<b>Vegetarian Diet</b>	Suitable for
<b>Vegan Diet</b>	No		

NUTRITIONAL  
INFORMATION

Each 100g/ml portion contains:



of your reference intake.

Typical values per 100g/ml : Energy 429kcal / 1790kJ

Nutrient	per 100g/ml	RI per 100g/ml	per 80g/ml serving	RI per 80g/ml serving
Energy (kJ)	1790 kJ	21%	1432 kJ	17%
Energy (kcal)	429 kcal	21%	343.2 kcal	17%
Fat	23.6 g	34%	18.9 g	27%
of which Saturates	15.4 g	77%	12.3 g	62%
Carbohydrate	44.2 g	17%	35.4 g	14%
of which Sugars	11.9 g	13%	9.5 g	11%
Fibre	2.2 g		1.8 g	
Protein	8.8 g	18%	7 g	14%
Salt	0.73 g	12%	0.6 g	10%
Sodium	290 mg		232 mg	
Serving Size	80 g			

HANDLING &  
STORAGE  
INFORMATION

**Directions For Use**

Bake for 18 minutes at 190°

**Storage Instructions**

Keep frozen at -18°C or below

ORIGIN

**Product Country of Origin/Place of** Belgium

**Provenance**

**Additional Origin Details**

N/A

**Address**

Lantmannen Unibake  
Maidstone Road  
Kingston  
Milton Keynes  
MK10 0BD  
England

**Technical Contact**

Inesa Jegoroviene  
Senior Specifications Technologist  
inesa.jegoroviene@lantmanen.com

P: (Phone) 07885418956

P: (Phone) 07780837112

**Complaints Contact**

Ursula Jaillet  
Technical Coordinator  
unibakeuk.technicalservices@lantmannen.com

CONTACT  
INFORMATION

The information on the [Erudus System](#) has been supplied by the manufacturers of the products and, whilst the owners of the Erudus System take steps to ensure the information is regularly updated, they give no warranty and no guarantee that the information is accurate. Product information and ingredients may change, please always read product labels carefully in addition to using the information provided by Erudus.

We do not accept liability for any inaccuracies or incorrect information contained on this site.  
Please visit <http://www.erudus.com/terms-and-conditions> for full terms and conditions.