

620016

FB Steak & Ale Suet Pudding (8 x 390g approx)

Steak & Ale Suet Pudding

PRODUCT DESCRIPTION

Frozen, Steamed, Baked Steak & Ale Puddings made with a Suet Pastry

Brand	Wrights Food Group
Manufacturer Product Code	2227
Product Type	Food
Product Category	Pies, Pizza, Sausages Rolls, Savouries
Storage Type	Frozen
Erudus ID	e2be7301c0874d298e4f90833b354819
Specification Type	Legacy



Outer Case GTIN 05018833022279



INGREDIENTS

Ingredient Declaration

WHEAT Flour, Water, Beef (21%), Beef Suet [Beef Fat, **WHEAT** Flour], Vegetable Shortening (Palm Oil, Rapeseed Oil, Palm Stearin), Ale (5%) (contains **BARLEY**, **WHEAT**), Onions, Mushrooms (4%), Modified Maize Starch, Tomato Puree, Roast Beef Stock [Rehydrated Beef, Natural Flavouring, Water, Beef Stock, Salt, Potato Flakes, Sugar, Beef Fat, Lemon Juice Concentrate, Malt Extract (**BARLEY**), Yeast Extract, Dried Onion Powder], Salt, Raising Agents (E450i, E500ii), Yeast Extract, Malt Extract (**BARLEY**), White Pepper, Black Pepper.

ALLERGENS

Product Contains:

Celery/Celery	No	Mustard	No
Cereals Containing Gluten	Yes	Nuts (Tree)	May Contain
Barley	Yes	Almond nuts	May Contain
Oats	No	Brazil nuts	No
Rye	No	Cashew nuts	May Contain
Wheat (including Spelt and Khorasan)	Yes	Hazelnuts	No
Gluten content <20ppm	No	Macadamia (Queensland) nuts	No
Crustacea	No	Pecan nuts	No
Eggs	No	Pistachio nuts	No
Fish	No	Walnuts	No
Lupin	No	Peanuts	No
Milk	No	Sesame Seeds	No
Molluscs	No	Soybeans	No
		Sulphur Dioxide and Sulphites	No

Risk Source:

Additional Allergen Information

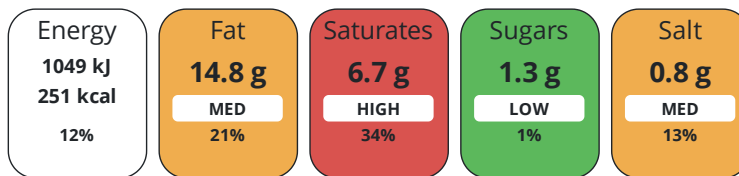
Wheat Flour contains Calcium carbonate, Iron, Niacin and Thiamin. Allergens: For allergens (including cereals containing gluten) see ingredients in UPPER CASE. May contain Nuts.

DIET
SUITABILITY

Suitable for Coeliacs	No	Halal Diet	No
Kosher Diet	No	Vegetarian Diet	No
Vegan Diet	No		

NUTRITIONAL
INFORMATION

Each 100g/ml portion contains:



of your reference intake.

Typical values per 100g/ml : Energy 251kcal / 1049kJ

Nutrient	per 100g/ml	RI per 100g/ml	per 390g/ml serving	RI per 390g/ml serving
Energy (kJ)	1049 kJ	12%	4091.1 kJ	49%
Energy (kcal)	251 kcal	13%	978.9 kcal	49%
Fat	14.8 g	21%	57.7 g	82%
of which Saturates	6.7 g	34%	26.1 g	131%
Carbohydrate	21.8 g	8%	85 g	33%
of which Sugars	1.3 g	1%	5.1 g	6%
Fibre	1.2 g		4.7 g	
Protein	7.1 g	14%	27.7 g	55%
Salt	0.8 g	13%	3.1 g	52%
Serving Size	390 g			

HANDLING &
STORAGE
INFORMATION

Directions For Use

Reheating Guidelines: Microwave from Frozen (Based on a 1000 watt microwave) 1. Place pudding in microwave upside down in its pot. Heat on full power for 3 minutes 2.Turn pudding upright and heat again for 3-4 minutes 3. Rest for 2 minutes, decant from pot and serve. Ensure product is piping hot throughout before serving.

Storage Instructions

Store below -18°C. Once defrosted DO NOT re-freeze. Handle with care.

ORIGIN

Product Country of Origin/Place of United Kingdom

Provenance

Additional Origin Details

Using Beef from UK and ROI.

CONTACT
INFORMATION

Address

Wrights Food Group
Weston Road
Crewe
Cheshire
CW1 6XQ
England

P: (Phone) 01270 504300

Complaints Contact

Maria Bogdan
Technical Services Administrator
technicalqueriescrewe@compleatfood.com

P: (Phone) 01270 504300

Technical Contact

Lisa Hassan
Head of Technical
lisa.hassan@compleatfood.com

P: (Phone) 01270 504300

Commercial Contact

Sarah Morris
National Accounts Manager
sarah.morris@compleatfood.com

P: (Phone) 01270 504300

The information on the [Erudus System](#) has been supplied by the manufacturers of the products and, whilst the owners of the Erudus System take steps to ensure the information is regularly updated, they give no warranty and no guarantee that the information is accurate. Product information and ingredients may change, please always read product labels carefully in addition to using the information provided by Erudus.

We do not accept liability for any inaccuracies or incorrect information contained on this site.
Please visit <http://www.erudus.com/terms-and-conditions> for full terms and conditions.