

600006

FU Potato and Corned Beef Pasty (36 x 185g approx)

Fu Potato And Corned Beef Pasty (36 X 185g Approx)

PRODUCT DESCRIPTION

Potato & Corned Beef pasty filling encased in puff pastry

Brand	Wrights Food Group
Manufacturer Product Code	2040
Product Type	Food
Product Category	Pies, Pizza, Sausages Rolls, Savouries
Storage Type	Frozen
Erudus ID	3e52dabccea5478ca09b3f7ff74f7b66
Specification Type	Legacy



Outer Case GTIN 05018833020404



INGREDIENTS

Ingredient Declaration

Water, **WHEAT** Flour (Contains Calcium Carbonate, Iron, Niacin, Thiamin), Potatoes (21%), Margarine [Palm Oil, Palm Stearin, Water, Salt, Rapeseed Oil, Emulsifier (E471), Acidity Regulator (E330), Lemon Juice concentrate], Corned Beef (12%) [Beef, Salt, Sugar, Preservative (Sodium Nitrite)], Diced Onion, Glaze [Water, Modified Starch (Potato, Tapioca), Rapeseed Oil, **MILK** Proteins, Emulsifiers (**SOYA** Lecithin, E471), Acidity Regulator (E339iii), Colour (E160a)], Salt, Seasoning [Salt, Hydrolysed Vegetable Protein (**SOYA**), Yeast Extract, Flavouring, Acid (Citric Acid)], Stabiliser (E460).

ALLERGENS

Product Contains:

Celery/Celeriac	No	Mustard	No
Cereals Containing Gluten	Yes	Nuts (Tree)	May Contain
Barley	No	Almond nuts	May Contain
Oats	No	Brazil nuts	No
Rye	No	Cashew nuts	May Contain
Wheat (including Spelt and Khorasan)	Yes	Hazelnuts	No
Gluten content <20ppm	No	Macadamia (Queensland) nuts	No
Crustacea	No	Pecan nuts	No
Eggs	No	Pistachio nuts	No
Fish	No	Walnuts	No
Lupin	No	Peanuts	No
Milk	Yes	Sesame Seeds	No
Molluscs	No	Soybeans	Yes
		Sulphur Dioxide and Sulphites	No

Risk Source:

Additional Allergen Information

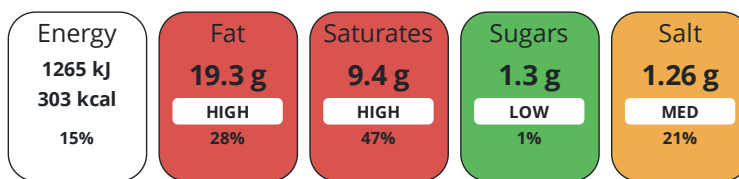
Allergens: For allergens (including cereals containing gluten) see ingredients in UPPER CASE. May also contain Nuts.

DIET
SUITABILITY

Suitable for Coeliacs	No	Halal Diet	No
Kosher Diet	No	Vegetarian Diet	No
Vegan Diet	No		

NUTRITIONAL
INFORMATION

Each 100g/ml portion contains:



of your reference intake.

Typical values per 100g/ml : Energy 303kcal / 1265kJ

Nutrient	per 100g/ml	RI per 100g/ml	per 185g/ml serving	RI per 185g/ml serving
Energy (kJ)	1265 kJ	15%	2340.3 kJ	28%
Energy (kcal)	303 kcal	15%	560.6 kcal	28%
Fat	19.3 g	28%	35.7 g	51%
of which Saturates	9.4 g	47%	17.4 g	87%
Carbohydrate	24.4 g	9%	45.1 g	17%
of which Sugars	1.3 g	1%	2.4 g	3%
Fibre	1.3 g		2.4 g	
Protein	7.3 g	15%	13.5 g	27%
Salt	1.26 g	21%	2.3 g	38%
Serving Size	185 g			

HANDLING &
STORAGE
INFORMATION

Directions For Use

Baking Guidelines: Bake from frozen. Place on a baking tray in a pre - heated oven 200°C / 400°F/ Gas mark 6 for approximately 20 - 25 minutes. Ensure product is piping hot throughout before serving.

Storage Instructions

Store below -18°C. Once defrosted DO NOT re-freeze. Handle with care.

ORIGIN

Product Country of Origin/Place of United Kingdom

Provenance

Additional Origin Details

Produced in the UK using beef from Brazil or Argentina.

CONTACT
INFORMATION

Address

Wrights Food Group
Weston Road
Crewe
Cheshire
CW1 6XQ
England

P: (Phone) 01270 504300

Complaints Contact

Maria Bogdan
Technical Services Administrator
technicalqueriescrewe@compleatfood.com

P: (Phone) 01270 504300

Technical Contact

Lisa Hassan
Head of Technical
lisa.hassan@compleatfood.com

P: (Phone) 01270 504300

Commercial Contact

Lisa Gough
National Accounts Manager
lisa.gough@compleatfood.com

P: (Phone) 07593 563750

The information on the [Erudus System](#) has been supplied by the manufacturers of the products and, whilst the owners of the Erudus System take steps to ensure the information is regularly updated, they give no warranty and no guarantee that the information is accurate. Product information and ingredients may change, please always read product labels carefully in addition to using the information provided by Erudus.

We do not accept liability for any inaccuracies or incorrect information contained on this site.
Please visit <http://www.erudus.com/terms-and-conditions> for full terms and conditions.