

Changed Jul 23, 2024 13:59

Reviewed Jul 23, 2024 13:59

Erudus ID 64d92b515fc34b858960bff7be12092c

Version 2.0

75487 Pistachio Tiffin 1x15

75487 Pistachio Tiffin 1x15

PRODUCT DESCRIPTION

Pistachio flavoured tiffin base, topped with green coloured white chocolate flavour coating, sprinkled with nibbed pistachios & edible dried rose petals, with a dark chocolate flavour coating swirl.

Brand	CAKE
Manufacturer Product Code	75487
Product Type	Food
Product Category	Traybake
Storage Type	Frozen
Erudus ID	64d92b515fc34b858960bff7be12092c
Specification Type	Bakery Products



Inner Pack GTIN 5060268094529

Outer Case GTIN 15060268094526



INGREDIENTS

Ingredient Declaration

White Chocolate Flavour Topping (Sugar, Palm Oil, Whey Powder (**MILK**), Wheat Flour (**WHEAT** Flour, Calcium Carbonate, Niacin, Iron, Thiamin), Emulsifier (**SOYA** Lecithin), Natural Flavouring), Digestive Biscuit Pieces (Wheat Flour (**WHEAT** Flour, Calcium Carbonate, Iron, Niacin, Thiamin), Wholemeal **WHEAT** Flour, Vegetable Shortening (Palm Oil, Rapeseed Oil), Sugar, Partially Invert Sugar Syrup, Raising Agents (Sodium Bicarbonate, Ammonium Bicarbonate), Salt), Biscuit Crumb (Wheat Flour (**WHEAT** Flour, Calcium Carbonate, Iron, Niacin, Thiamin), Wholemeal **WHEAT** Flour, Vegetable Oils (Palm Oil, Rapeseed Oil), Sugar, Partially Inverted Sugar Syrup, Raising Agents (Sodium Bicarbonate, Ammonium Bicarbonate), Salt), Milk Chocolate Flavour Topping (Sugar, Vegetable Fats (Palm Kernel, Palm), Whey Powder (**MILK**), Wheat Flour (**WHEAT** Flour, Calcium Carbonate, Niacin, Iron, Thiamin), Fat Reduced Cocoa Powder, Emulsifier (**SOYA** Lecithin, Polyglycerol Polyricinoleate), Natural Flavouring), Margarine (Palm Oil, Rapeseed Oil, Water, Salt, Emulsifier (Mono- and Diglycerides of Fatty Acids), Flavouring, Colours (Annatto Bixin, Curcumin)), Invert Sugar Syrup, Dark Chocolate Coating (Sugar, Vegetable Oil (Palm Kernel, Palm Oil), Fat Reduced Cocoa Powder, Wheat Flour (**WHEAT** Flour, Calcium Carbonate, Iron, Niacin, Thiamin), Whey Powder (**MILK**), Emulsifiers (**SOYA** Lecithin, Polyglycerol Polyricinoleate), Natural Flavouring), Nibbed **PISTACHIO (NUTS)** (1.5%), Green Colouring, Pistachio Flavouring, Edible Dried Ruby Rose Petals (0.2%).

Ingredient Statements

Pistachio Pieces - Choking hazard, not suitable for children less than 3 years of age

ALLERGENS

Product Contains:

Celery/Celeriac	No
Cereals Containing Gluten	Yes
Barley	May Contain
Oats	May Contain
Rye	No
Wheat (including Spelt and Khorasan)	Yes
Crustacea	No
Eggs	May Contain
Fish	No
Lupin	No
Milk	Yes
Molluscs	No

Mustard	No
Nuts (Tree)	Yes
Almond nuts	May Contain
Brazil nuts	No
Cashew nuts	No
Hazelnuts	May Contain
Macadamia (Queensland) nuts	No
Pecan nuts	No
Pistachio nuts	Yes
Walnuts	May Contain
Peanuts	No
Sesame Seeds	No
Soybeans	Yes
Sulphur Dioxide and Sulphites	May Contain

Risk Source:

Barley (Risk Source)	Line
Eggs (Risk Source)	Line
Hazelnuts (Risk Source)	Line
Sulphur Dioxide and Sulphites (Risk Source)	Line

Oats (Risk Source)	Line
Almond nuts (Risk Source)	Line
Walnuts (Risk Source)	Line

Allergen Statement On Pack

Pistachio Pieces - Choking hazard, not suitable for children less than 3 years of age

Additional Allergen Information

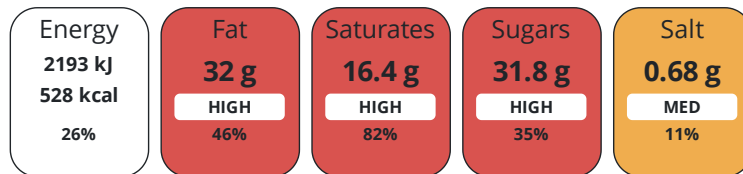
Allergy Advice: For allergens, including cereals containing gluten, see ingredients in bold. May also contain traces of gluten (oats, barley), eggs, sulphites and other tree nuts

DIET SUITABILITY

Vegan Diet	No	Vegetarian Diet	Suitable for
Halal Diet	No	Kosher Diet	No

NUTRITIONAL INFORMATION

Each 100g/ml portion contains:



of your reference intake.

Typical values per 100g/ml : Energy 528kcal / 2193kJ

Nutrient	per 100g	RI per 100g	per 78g serving	RI per 78g serving
Energy (kJ)	2193 kJ	26%	1710.5 kJ	20%
Energy (kcal)	528 kcal	26%	411.8 kcal	21%
Fat	32 g	46%	25 g	36%
of which Saturates	16.4 g	82%	12.8 g	64%
Carbohydrate	54.9 g	21%	42.8 g	16%
of which Sugars	31.8 g	35%	24.8 g	28%
Fibre	1.3 g		1 g	
Protein	4.4 g	9%	3.4 g	7%
Salt	0.68 g	11%	0.5 g	8%

Serving Size	78 g
Number of Servings	1 Servings

HANDLING &
STORAGE
INFORMATION

Directions For Use

Ambient: Store in a cool, dry place. Once opened use within 5 days.

Storage Instructions

Ambient: Store in a cool, dry place. Once opened use within 5 days.

Storage Instructions After Opening

Once opened use within 5 days.

ORIGIN

Product Country of Origin/Place of Scotland

Provenance

Additional Origin Details

Produced in Scotland

Address

Lomond Fine Foods Ltd
75 Keppochhill Drive
70 Spiersbridge Road, Thornliebank, Glasgow, G46 7SN
Springburn
Glasgow
G21 1HX
Scotland

P: (Phone) 0141 353 6777

CONTACT
INFORMATION

The information on the [Erudus System](#) has been supplied by the manufacturers of the products and, whilst the owners of the Erudus System take steps to ensure the information is regularly updated, they give no warranty and no guarantee that the information is accurate. Product information and ingredients may change, please always read product labels carefully in addition to using the information provided by Erudus.

We do not accept liability for any inaccuracies or incorrect information contained on this site.
Please visit <http://www.erudus.com/terms-and-conditions> for full terms and conditions.