

630969

Kara MK4.5 Sliced Brioche Style Burger Bun

Kara Mk4.5 Sliced Brioche Style Burger Bun

PRODUCT DESCRIPTION

A soft sweet bun with a glazed golden top.

| | |
|---------------------------|----------------------------------|
| Brand | Kara Foodservice (Fletchers) |
| Manufacturer Product Code | F02224 |
| Product Type | Food |
| Product Category | Bread and Bread Products |
| Storage Type | Frozen |
| Erudus ID | 068a2ca1b03f48b09c834e99347ae61e |
| Specification Type | Legacy |
| Outer Case GTIN | 05051788122243 |



INGREDIENTS

Ingredient Declaration

WHEAT Flour (**WHEAT** Flour, Calcium Carbonate, Niacin, Iron, Thiamin), Water, Sugar, Sourdough (Water, **WHEAT** Flour, **RYE** Flour, **WHEATGERM** Flour, Dextrose), Rapeseed Oil, Salt, Emulsifiers: E471, E472e; Yeast, Brandy Vinegar, Flavouring, Vegetable Protein. **WHEAT** Starch, Colour: E160a (iv). Flour Treatment Agent: E300; Dextrose.

ALLERGENS

Product Contains:

| | | | |
|---|-----|--------------------------------------|-------------|
| Celery/Celeriac | No | Mustard | No |
| Cereals Containing Gluten | Yes | Nuts (Tree) | No |
| Barley | No | Almond nuts | No |
| Oats | No | Brazil nuts | No |
| Rye | Yes | Cashew nuts | No |
| Wheat (including Spelt and Khorasan) | Yes | Hazelnuts | No |
| Gluten content <20ppm | No | Macadamia (Queensland) nuts | No |
| Crustacea | No | Pecan nuts | No |
| Eggs | No | Pistachio nuts | No |
| Fish | No | Walnuts | No |
| Lupin | No | Peanuts | No |
| Milk | No | Sesame Seeds | May Contain |
| Molluscs | No | Soybeans | No |
| | | Sulphur Dioxide and Sulphites | No |

Risk Source:

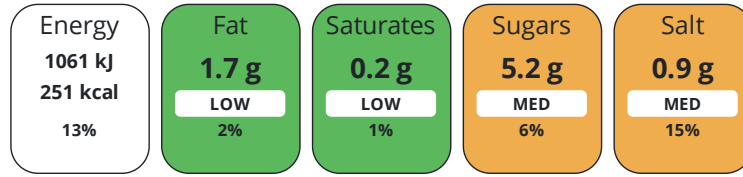
Additional Allergen Information

For allergens, including cereals containing Gluten, see ingredients in BOLD/CAPITALS MAY CONTAIN SESAME SEEDS

DIET SUITABILITY

| | | | |
|------------------------------|--------------|------------------------|--------------|
| Suitable for Coeliacs | No | Halal Diet | No |
| Kosher Diet | No | Vegetarian Diet | Suitable for |
| Vegan Diet | Suitable for | | |

Each 100g/ml portion contains:



of your reference intake.

Typical values per 100g/ml : Energy 251kcal / 1061kJ

| Nutrient | per 100g/ml | RI per 100g/ml | per 86g/ml serving | RI per 86g/ml serving |
|---------------------------|-------------|----------------|--------------------|-----------------------|
| Energy (kJ) | 1061 kJ | 13% | 912.5 kJ | 11% |
| Energy (kcal) | 251 kcal | 13% | 215.9 kcal | 11% |
| Fat | 1.7 g | 2% | 1.5 g | 2% |
| of which Saturates | 0.2 g | 1% | 0.2 g | 1% |
| of which Mono-unsaturates | 0.7 g | | 0.6 g | |
| of which Polyunsaturates | 0.8 g | | 0.7 g | |
| Carbohydrate | 49.1 g | 19% | 42.2 g | 16% |
| of which Sugars | 5.2 g | 6% | 4.5 g | 5% |
| Fibre | 3.4 g | | 2.9 g | |
| Protein | 8 g | 16% | 6.9 g | 14% |
| Salt | 0.9 g | 15% | 0.8 g | 13% |
| Sodium | 360 mg | | 309.6 mg | |
| Serving Size | 86 g | | | |

HANDLING &
STORAGE
INFORMATION

Directions For Use

Defrost thoroughly before use. Remove from case and leave in bag at room temperature for 1 – 2 hours, or until fully defrosted. Once defrosted, store in a sealed pack in a cool, dry place away from direct sunlight. Once defrosted use within 4 days. Do not refreeze.

Storage Instructions

Keep frozen. Store frozen at -18°C or below. Once defrosted do not refreeze.

ORIGIN

Product Country of Origin/Place of United Kingdom

Provenance

Additional Origin Details

N/A

Address

Kara Foodservice (Fletchers)

Park Seventeen

Moss Lane

Whitefield

Manchester

M45 8FJ

England

P: (Phone) 0161 766 7471

CONTACT
INFORMATION

The information on the [Erudus System](#) has been supplied by the manufacturers of the products and, whilst the owners of the Erudus System take steps to ensure the information is regularly updated, they give no warranty and no guarantee that the information is accurate. Product information and ingredients may change, please always read product labels carefully in addition to using the information provided by Erudus.

We do not accept liability for any inaccuracies or incorrect information contained on this site.
Please visit <http://www.erudus.com/terms-and-conditions> for full terms and conditions.