

620011

Meatball Marinara Lattice 36 x 175g

Meatball Marinara Lattice 36x

PRODUCT DESCRIPTION

A Rich Tomato sauce with Meatballs and pockets of melted Cheese in a puff pastry lattice. – Frozen

Unbaked

Brand	Wrights Food Group
Manufacturer Product Code	2478
Product Type	Food
Product Category	Pies, Pizza, Sausages Rolls, Savouries
Storage Type	Frozen
Erudus ID	e44ad4e8f017489c8d46d3af885c5ee8
Specification Type	Legacy

Outer Case GTIN 05018833024785



INGREDIENTS

Ingredient Declaration

Water, **WHEAT** Flour, Margarine [Palm Oil, Palm Stearin, Water, Salt, Rapeseed Oil, Emulsifier (E471), Acidity Regulator (E330), Lemon Juice], Meatballs (14%) [Beef, Onion, Rusk (**WHEAT** Flour, Raising Agent E503ii), Beef Fat, Tomato Puree, Rapeseed Oil, Salt, Garlic Puree, Parsley, Oregano, Rosemary, Black Pepper, Bay Leaf], Chopped Tomatoes, Medium Fat Ripened Cheese (**MILK**) (5%), Onions, Tomato Puree, Modified Maize Starch, Glaze [Water, Modified Starch (Potato, Tapioca), Rapeseed Oil, **MILK** Proteins, Emulsifiers (**SOYA** Lecithin, E471), Acidity Regulator (E339), Colour (E160a)], Sundried Tomato Puree [Sundried Tomatoes, Sunflower Oil, White Vinegar, Herbs (Garlic, Rosemary, Basil), Black Pepper, Salt], Chicken Stock (Chicken, Yeast Extract, Salt, Chicken Fat, Leek Powder, Onion Powder, Onion Powder, Sugar, Lemon Juice from concentrate, Black Pepper, Sage Oil), Smokey Bacon [Streaky Bacon, Salt, Antioxidant (E 301), Preservative (E 250)], Sugar, Balsamic Vinegar, Garlic Puree, Beef Stock (Beef, Rehydrated Potato, Salt, Molasses, Carmelised Sugar Syrup, Dried Onion, Black Pepper), Salt, Vegetable Stock Mix [Vegetable Stock (Water, Onion, Carrot Extract, **CELERIAC**, Herbs, Garlic, Spice), Salt, Glucose Syrup, Maltodextrin, Yeast Extracts, Sugar, Flavourings, Rapeseed Oil], Rapeseed Oil, Basil, Paprika Extract, Milled Red Chillies, Carmelised Sugar, Cracked Black Pepper, Ground White Pepper.

Wheat Flour contains Calcium Carbonate, Iron, Niacin, Thiamin.

ALLERGENS

Product Contains:

Celery/Celериac	Yes	Mustard	No
Cereals Containing Gluten	Yes	Nuts (Tree)	May Contain
Barley	No	Almond nuts	May Contain
Oats	No	Brazil nuts	No
Rye	No	Cashew nuts	May Contain
Wheat (including Spelt and Khorasan)	Yes	Hazelnuts	No
Gluten content <20ppm	No	Macadamia (Queensland) nuts	No
Crustacea	No	Pecan nuts	No
Eggs	No	Pistachio nuts	No
Fish	No	Walnuts	No
Lupin	No	Peanuts	No
Milk	Yes	Sesame Seeds	No
Molluscs	No	Soybeans	Yes
		Sulphur Dioxide and Sulphites	No

Risk Source:

Additional Allergen Information

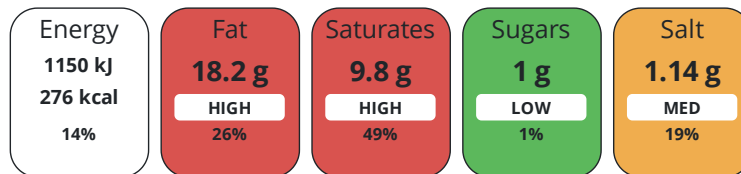
Allergens: For allergens (including cereals containing gluten) see ingredients in UPPER CASE. May contain Nuts.

DIET SUITABILITY

Suitable for Coeliacs	No	Halal Diet	No
Kosher Diet	No	Vegetarian Diet	No
Vegan Diet	No		

NUTRITIONAL INFORMATION

Each 100g/ml portion contains:



of your reference intake.

Typical values per 100g/ml : Energy 276kcal / 1150kJ

Nutrient	per 100g/ml	RI per 100g/ml	per 175g/ml serving	RI per 175g/ml serving
Energy (kJ)	1150 kJ	14%	2012.5 kJ	24%
Energy (kcal)	276 kcal	14%	483 kcal	24%
Fat	18.2 g	26%	31.9 g	46%
of which Saturates	9.8 g	49%	17.2 g	86%
Carbohydrate	19.9 g	8%	34.8 g	13%
of which Sugars	1 g	1%	1.8 g	2%
Fibre	0.9 g		1.6 g	
Protein	7.7 g	15%	13.5 g	27%
Salt	1.14 g	19%	2 g	33%

Serving Size 175 g

HANDLING & STORAGE INFORMATION

Directions For Use

Baking Guidelines: Bake from frozen. Place on a baking tray in a pre-heated oven 200°C / 420°F / Gas mark 6 for approximately 25 -35 minutes. Ensure product is piping hot throughout before serving.

Storage Instructions

Storage Conditions: Store below -18°C. Once defrosted DO NOT re-freeze. Handle with care.

ORIGIN

Product Country of Origin/Place of United Kingdom

Provenance

Additional Origin Details

Produced in the UK, using Beef from UK and Pork from EU.

CONTACT
INFORMATION

Address

Wrights Food Group
Weston Road
Crewe
Cheshire
CW1 6XQ
England

P: (Phone) 01270 504300

Complaints Contact

Maria Bogdan
Technical Services Administrator
technicalqueriescrewe@compleatfood.com

P: (Phone) 01270 504300

Technical Contact

Lisa Hassan
Head of Technical
lisa.hassan@compleatfood.com

P: (Phone) 01270 504300

Commercial Contact

Sarah Morris
National Accounts Manager
sarah.morris@compleatfood.com

P: (Phone) 01270 504300

The information on the [Erudus System](#) has been supplied by the manufacturers of the products and, whilst the owners of the Erudus System take steps to ensure the information is regularly updated, they give no warranty and no guarantee that the information is accurate. Product information and ingredients may change, please always read product labels carefully in addition to using the information provided by Erudus.

We do not accept liability for any inaccuracies or incorrect information contained on this site.
Please visit <http://www.erudus.com/terms-and-conditions> for full terms and conditions.