

Kerrymaid Buttery Spread 6 x 2kg

Kerrymaid Buttery Spread 6 X 2kg

PRODUCT DESCRIPTION

Premium dairy spread

Brand	Kerry Ingredients UK Limited
Manufacturer Product Code	20008558
Product Type	Food
Product Category	Fats and Yellow Fats
Storage Type	Chilled
Erudus ID	44a64976c4ee44868736450f22ef6d22
Specification Type	Legacy



Inner Component GTIN	5010219200233
Outer Case GTIN	05010219600774



INGREDIENTS

Ingredient Declaration

Water, Rapeseed Oil, Palm Oil, Reconstituted **BUTTERMILK** (3%), Salt (1.5%), Emulsifier (Mono and Di Glyceride of Fatty Acids), Preservative (Potassium Sorbate). Acidity Regulator (Lactic Acid), Vitamin A & D, Colour (Beta Carotene), Flavouring. Flavouring - Natural
Colour - Natural

ALLERGENS

Product Contains:

Celery/Celeriac	No	Mustard	No
Cereals Containing Gluten	No	Nuts (Tree)	No
Barley	No	Almond nuts	No
Oats	No	Brazil nuts	No
Rye	No	Cashew nuts	No
Wheat (including Spelt and Khorasan)	No	Hazelnuts	No
Crustacea	No	Macadamia (Queensland) nuts	No
Eggs	No	Pecan nuts	No
Fish	No	Pistachio nuts	No
Lupin	No	Walnuts	No
Milk	Yes	Peanuts	No
Molluscs	No	Sesame Seeds	No
		Soybeans	No
		Sulphur Dioxide and Sulphites	No

Additional Allergen Information

For allergen see ingredients in Bold.

SUPPLEMENTARY
INGREDIENT
INFORMATION

Palm Oil	Yes
Hydrogenated Vegetable Oil/Fat	No
GM Protein/DNA	No

ADDITIVES

Product Contains:

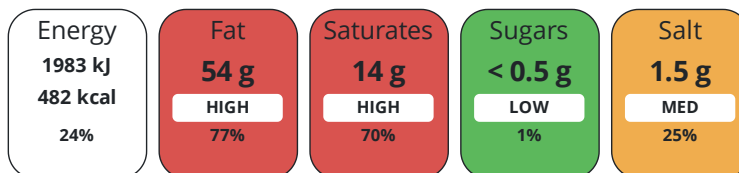
Artificial Antioxidants	No	Artificial Flavourings	No
Artificial Colours	No	Artificial Preservatives	Yes
Artificial Flavour Enhancers	No	Artificial Sweeteners	No

DIET
SUITABILITY

Suitable for Coeliacs	No	Halal Diet	No
Kosher Diet	No	Vegetarian Diet	Suitable for
Vegan Diet	No		

NUTRITIONAL
INFORMATION

Each 100g/ml portion contains:



of your reference intake.

Typical values per 100g/ml : Energy 482kcal / 1983kJ

Nutrient	per 100g/ml	RI per 100g/ml
Energy (kJ)	1983 kJ	24%
Energy (kcal)	482 kcal	24%
Fat	54 g	77%
of which Saturates	14 g	70%
of which Mono-unsaturates	28 g	
of which Polyunsaturates	11 g	
Carbohydrate	< 0.5 g	0%
of which Sugars	< 0.5 g	1%
Protein	< 0.5 g	1%
Salt	1.5 g	25%

VITAMINS AND
MINERALS

Nutrient	per 100g/ml	RI per 100g/ml
Vitamin A	800 µg	100%

SUPPLEMENTARY
NUTRITIONAL
INFORMATION

HANDLING &
STORAGE
INFORMATION

Directions For Use

Easy Spread

Storage Instructions

Keep refrigerated

Shelf Life from Time of Production 154 Days

ACCREDITATIONS/
CERTIFICATIONS/
ASSURANCE
SCHEMES

BRCGS Certified
Roundtable of Sustainable Palm Oil (RSPO)

Food for Life Supplier Scheme

ORIGIN	Product Country of Origin/Place of Provenance	United Kingdom				
	Additional Origin Details	product not suitable for country of origin statement Production of the finished product is in the UK				
PRODUCT CHARACTERISTICS	Standards Testing					
	Do you undertake trend analysis of microbiological results?	Yes	Is shelf life testing undertaken?	Yes		
	Microbiological Standards					
	Organism	Description	Frequency	Target	Maximum	Sample (g or ml)
	E. Coli (cfu/g or ml)		Monthly	<10	10	-
	Enterobacteriaceae (cfu/g or ml)		Monthly	<50	50	-
	Total Viable Count (TVC) (cfu/g or ml)		Monthly	<100	5000	-
	Yeast (cfu/g or ml)		Monthly	<20	100	-
	Moulds (cfu/g or ml)		Monthly	<20	100	-
	Analytical Standards					
Test	Description	Frequency	Target	Range	Sample (g or ml)	
Moisture (%)		Every Batch	=43.5	41.5 to 45.5	-	
Salt Content (%)		Every Batch	=1.5	1.3 to 1.7	-	
CONFIGURATION	Case Configuration	Inner Pack Configuration				
	Total Quantity of Inner Components in Outer Case	6 Units				
	Is the Outer Case Splittable?	Yes				
PRODUCT WEIGHTS	Inner Component					
	Variable Weight Consumer Item	No				
	Net Drained Weight	2 kg				
	Weight/Volume	2kg e				
	Outer Case					
	Outer Case Gross Weight	12.69 kg				
Outer Case Net Weight	12 kg					
PRODUCT DIMENSIONS	Inner Component					
	Inner Component Depth	184 mm				
	Inner Component Width	184 mm				
	Inner Component Height	101 mm				
	Outer Case					
	Outer Case Depth	380 mm				
	Outer Case Width	287 mm				
Outer Case Height	190 mm					
PALLET INFORMATION	Quantity of Cases Per Pallet Layer	15 Cases	Pallet Height	1.6 MTR		
	Quantity of Layers Per Pallet	5 Layers	Pallet Gross Weight	999.99 kg		
	Quantity of Cases Per Pallet	75 Cases				

PACKAGING

Inner Component Packaging

Type	Materials	Weight	Recycled Plastic %	Recyclable	Returnable	Composite
Tub	Plastic	56 g	- %			

Outer Case Packaging

Type	Materials	Weight	Recycled Plastic %	Recyclable	Returnable	Composite
Case	Paper/Cardboard	296 g	- %			

Transport Packaging

Type	Materials	Weight	Recycled Plastic %	Recyclable	Returnable	Composite
Other	Plastic	196 g	- %			

OTHER INFORMATION

Manufacturer Comments

Chilled delivery

CONTACT INFORMATION

Address

Kerry Ingredients UK Limited
 Global Technology & Innovation Centre
 Millennium Park
 Naas
 Co.Kildare
 W91 W923
 Ireland

Technical Contact

Bernard James
 Sales Support
 bernard.james@kerry.com

P: (Phone) +00 353 45 931 000

Complaints Contact

Customer Service Europe
 Customer Service Europe
 customerserviceeurope@kerry.com

Commercial Contact

Daren Baalham
 Channel Controller
 daren.baalham@kerry.com

P: (Phone) +00 353 45 931 000

The information on the [Erudus System](#) has been supplied by the manufacturers of the products and, whilst the owners of the Erudus System take steps to ensure the information is regularly updated, they give no warranty and no guarantee that the information is accurate. Product information and ingredients may change, please always read product labels carefully in addition to using the information provided by Erudus.

We do not accept liability for any inaccuracies or incorrect information contained on this site.
 Please visit <http://www.erudus.com/terms-and-conditions> for full terms and conditions.