

600015

# FU Chicken & Mushroom Slice (36 x 175g approx)

Fu Chicken & Mushroom Slice (36 X 175g Approx)

## PRODUCT DESCRIPTION

Chunks of succulent chicken in a creamy mushroom sauce encased in puff pastry - Frozen Unbaked

|                                  |  |
|----------------------------------|--|
| <b>Brand</b>                     | Wrights Food Group                     |
| <b>Manufacturer Product Code</b> | 2083                                   |
| <b>Product Type</b>              | Food                                   |
| <b>Product Category</b>          | Pies, Pizza, Sausages Rolls, Savouries |
| <b>Storage Type</b>              | Frozen                                 |
| <b>Erudus ID</b>                 | 2b32c4a22c904980997e26a2ad05a09e       |
| <b>Specification Type</b>        | Legacy                                 |



**Outer Case GTIN** 05018833020831



## INGREDIENTS

### Ingredient Declaration

Ingredients: Water, **WHEAT** Flour, Margarine [Palm Oil, Palm Stearin, Water, Salt, Rapeseed Oil, Emulsifier (E471), Acidity Regulator (Citric acid), Lemon Juice], Cooked Chicken (13%) [Chicken Breast, Salt], Mushroom (3%), Fat Powder [Palm Oil, Lactose (**MILK**), **MILK** Protein], Onions, Glaze [Water, Modified Starch (Potato, Tapioca), Rapeseed Oil, **MILK** Proteins, Emulsifiers (**SOYA** Lecithins, E471), Acidity Regulator (E339iii), Colour (Carotenes)], Sauce Mix [Modified Maize Starch, Fat Powder (Palm Oil, Lactose (**MILK**), **MILK** Proteins), **WHEAT** Flour, Whole **MILK** Powder, Salt, Yeast Extract, Hydrolysed Vegetable Protein, Flavourings (Pepper, **CELERY**, Onion, Bouquet Garni)], Chicken Stock [Chicken, Yeast Extract, Salt, Chicken Fat, Rehydrated Vegetable Powders (Leek, Onion), Sugar, Concentrated Lemon Juice, Natural Black Pepper Flavour, Sage Oil], Thickener (E1422), Roast Chicken Stock [Roast Chicken, Chicken Fat, Maltodextrin, Yeast Extract, Glucose Syrup, Salt, Natural Flavouring, Sugar, Concentrated Chicken Extract, Concentrated Lemon Juice, Onion Powder], Salt, Emulsifier (E464), Onion Powder, Yeast Extract, White Pepper, Black Pepper.

## ALLERGENS

Product Contains:

|   |     |                                      |             |
|---|-----|--------------------------------------|-------------|
| <b>Celery/Celeriac</b>                      | Yes | <b>Mustard</b>                       | No          |
| <b>Cereals Containing Gluten</b>            | Yes | <b>Nuts (Tree)</b>                   | May Contain |
| <b>Barley</b>                               | No  | <b>Almond nuts</b>                   | May Contain |
| <b>Oats</b>                                 | No  | <b>Brazil nuts</b>                   | No          |
| <b>Rye</b>                                  | No  | <b>Cashew nuts</b>                   | May Contain |
| <b>Wheat (including Spelt and Khorasan)</b> | Yes | <b>Hazelnuts</b>                     | No          |
| <b>Gluten content &lt;20ppm</b>             | No  | <b>Macadamia (Queensland) nuts</b>   | No          |
| <b>Crustacea</b>                            | No  | <b>Pecan nuts</b>                    | No          |
| <b>Eggs</b>                                 | No  | <b>Pistachio nuts</b>                | No          |
| <b>Fish</b>                                 | No  | <b>Walnuts</b>                       | No          |
| <b>Lupin</b>                                | No  | <b>Peanuts</b>                       | No          |
| <b>Milk</b>                                 | Yes | <b>Sesame Seeds</b>                  | No          |
| <b>Molluscs</b>                             | No  | <b>Soybeans</b>                      | Yes         |
|   |     | <b>Sulphur Dioxide and Sulphites</b> | No          |

Risk Source:

### Additional Allergen Information

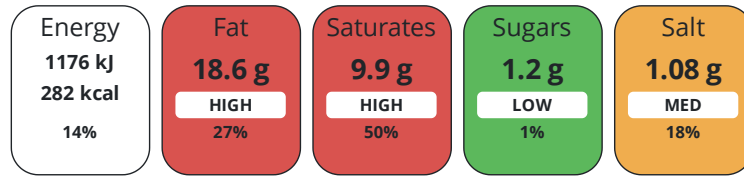
Wheat Flour contains Calcium carbonate, Iron, Niacin, Thiamin. Allergens: For allergens (including cereals containing gluten), see ingredients in UPPER CASE. May contain Nuts. Bone warning: Although every care has been taken to remove bones, small bones may remain.

#### DIET SUITABILITY

|                              |    |                        |    |
|------------------------------|----|------------------------|----|
| <b>Suitable for Coeliacs</b> | No | <b>Halal Diet</b>      | No |
| <b>Kosher Diet</b>           | No | <b>Vegetarian Diet</b> | No |
| <b>Vegan Diet</b>            | No |                        |    |

#### NUTRITIONAL INFORMATION

Each 100g/ml portion contains:



of your reference intake.

Typical values per 100g/ml : Energy 282kcal / 1176kJ

| Nutrient                  | per 100g/ml | RI per 100g/ml | per 175g/ml serving | RI per 175g/ml serving |
|---------------------------|-------------|----------------|---------------------|------------------------|
| <b>Energy (kJ)</b>        | 1176 kJ     | 14%            | 2058 kJ             | 25%                    |
| <b>Energy (kcal)</b>      | 282 kcal    | 14%            | 493.5 kcal          | 25%                    |
| <b>Fat</b>                | 18.6 g      | 27%            | 32.6 g              | 47%                    |
| <b>of which Saturates</b> | 9.9 g       | 50%            | 17.3 g              | 87%                    |
| <b>Carbohydrate</b>       | 21.2 g      | 8%             | 37.1 g              | 14%                    |
| <b>of which Sugars</b>    | 1.2 g       | 1%             | 2.1 g               | 2%                     |
| <b>Fibre</b>              | 1.3 g       |                | 2.3 g               |                        |
| <b>Protein</b>            | 7 g         | 14%            | 12.3 g              | 25%                    |
| <b>Salt</b>               | 1.08 g      | 18%            | 1.9 g               | 32%                    |
| <b>Serving Size</b>       | 175 g       |                |                     |                        |

#### HANDLING & STORAGE INFORMATION

##### Directions For Use

Baking Guidelines: Bake from frozen. Place on a baking tray in a pre-heated oven at 200°C / 400°F / Gas Mark 6 for approximately 25 - 30 minutes. Ensure product is piping hot throughout before serving.

##### Storage Instructions

Store below -18°C. Once defrosted DO NOT re-freeze. Handle with care.

#### ORIGIN

**Product Country of Origin/Place of** United Kingdom

##### Provenance

##### Additional Origin Details

Produced in the UK

CONTACT  
INFORMATION

Address

Wrights Food Group  
Weston Road  
Crewe  
Cheshire  
CW1 6XQ  
England

P: (Phone) 01270 504300

Complaints Contact

Maria Bogdan  
Technical Services Administrator  
technicalqueriescrewe@compleatfood.com

P: (Phone) 01270 504300

Technical Contact

Lisa Hassan  
Head of Technical  
lisa.hassan@compleatfood.com

P: (Phone) 01270 504300

Commercial Contact

Sarah Morris  
National Accounts Manager  
sarah.morris@compleatfood.com

P: (Phone) 01270 504300

The information on the [Erudus System](#) has been supplied by the manufacturers of the products and, whilst the owners of the Erudus System take steps to ensure the information is regularly updated, they give no warranty and no guarantee that the information is accurate. Product information and ingredients may change, please always read product labels carefully in addition to using the information provided by Erudus.

We do not accept liability for any inaccuracies or incorrect information contained on this site.  
Please visit <http://www.erudus.com/terms-and-conditions> for full terms and conditions.