

620060

FU Beef & Vegetable Pasty (30 x 216g approx)

Beef & Vegetable Pasty

PRODUCT DESCRIPTION

A blend of minced beef and vegetables encased in light puff pastry - Frozen Unbaked

Brand	Wrights Food Group
Manufacturer Product Code	2105
Product Type	Food
Product Category	Pies, Pizza, Sausages Rolls, Savouries
Storage Type	Frozen
Erudus ID	1ced183cdbee40fe87fbb24e456cb7fa
Specification Type	Legacy
Outer Case GTIN	05018833021050



INGREDIENTS

Ingredient Declaration

WHEAT Flour (contains Calcium carbonate, Iron, Niacin and Thiamin), Water, Margarine [Palm Oil, Palm Stearin, Water, Rapeseed Oil, Salt, Emulsifier (E471), Acidity Regulator (E330), Lemon Juice], Beef (11%), Potato (10%), Onions (4%), Carrots (4%), Swede (3%), Glaze [Water, Modified Starch, Rapeseed Oil, **MILK** Proteins, Emulsifiers (**SOYA** Lecithin, E471), Acidity Regulator (E339iii), Colour (E160a)], Thickener (E1422), Salt, Dried Potato Flake, Roast Beef Stock [Rehydrated Beef, Natural Flavouring, Water, Beef Stock, Salt, Dried Potato Flake, Sugar, Beef Fat, Lemon Juice Concentrate, Malt Extract (**BARLEY**), Yeast Extract, Dried Onion Powder], Potato Fibre, Emulsifier (E464), Yeast Extract, Ground White Pepper, Onion Powder, Ground Black Pepper, Caramelised Sugar.

ALLERGENS

Product Contains:

Celery/Celeriac	No	Mustard	No
Cereals Containing Gluten	Yes	Nuts (Tree)	May Contain
Barley	Yes	Almond nuts	May Contain
Oats	No	Brazil nuts	No
Rye	No	Cashew nuts	May Contain
Wheat (including Spelt and Khorasan)	Yes	Hazelnuts	No
Gluten content <20ppm	No	Macadamia (Queensland) nuts	No
Crustacea	No	Pecan nuts	No
Eggs	No	Pistachio nuts	No
Fish	No	Walnuts	No
Lupin	No	Peanuts	No
Milk	Yes	Sesame Seeds	No
Molluscs	No	Soybeans	Yes
		Sulphur Dioxide and Sulphites	No

Risk Source:

Additional Allergen Information

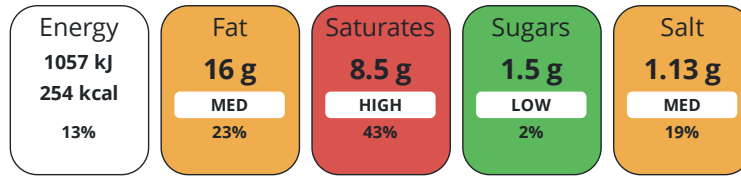
Allergens: For allergens, including cereals containing gluten, see ingredients in UPPER CASE. May also contain nuts.

DIET SUITABILITY

Suitable for Coeliacs	No	Halal Diet	No
Kosher Diet	No	Vegetarian Diet	No
Vegan Diet	No		

NUTRITIONAL
INFORMATION

Each 100g/ml portion contains:



of your reference intake.

Typical values per 100g/ml : Energy 254kcal / 1057kJ

Nutrient	per 100g/ml	RI per 100g/ml	per 216g/ml serving	RI per 216g/ml serving
Energy (kJ)	1057 kJ	13%	2283.1 kJ	27%
Energy (kcal)	254 kcal	13%	548.6 kcal	27%
Fat	16 g	23%	34.6 g	49%
of which Saturates	8.5 g	43%	18.4 g	92%
Carbohydrate	21.4 g	8%	46.2 g	18%
of which Sugars	1.5 g	2%	3.2 g	4%
Fibre	1.9 g		4.1 g	
Protein	5.2 g	10%	11.2 g	22%
Salt	1.13 g	19%	2.4 g	40%
Serving Size	216 g			

HANDLING &
STORAGE
INFORMATION

Directions For Use

Baking Guidelines: Bake from frozen. Place into a pre-heated oven at 200°C / 400°F / Gas Mark 6 for approximately 30 - 40 minutes. Ensure product is piping hot throughout before serving.

Storage Instructions

Store below -18°C. Once defrosted DO NOT re-freeze. Handle with care.

ORIGIN

Product Country of Origin/Place of United Kingdom

Provenance

Additional Origin Details

Produced in the UK using Beef from the ROI and UK.

Address

Wrights Food Group
Weston Road
Crewe
Cheshire
CW1 6XQ
England

P: (Phone) 01270 504300

Complaints Contact

Maria Bogdan
Technical Services Administrator
technicalqueriescrewe@compleatfood.com

P: (Phone) 01270 504300

Technical Contact

Lisa Hassan
Head of Technical
lisa.hassan@compleatfood.com

P: (Phone) 01270 504300

Commercial Contact

Sarah Morris
National Accounts Manager
sarah.morris@compleatfood.com

P: (Phone) 01270 504300

CONTACT
INFORMATION

The information on the [Erudus System](#) has been supplied by the manufacturers of the products and, whilst the owners of the Erudus System take steps to ensure the information is regularly updated, they give no warranty and no guarantee that the information is accurate. Product information and ingredients may change, please always read product labels carefully in addition to using the information provided by Erudus.

We do not accept liability for any inaccuracies or incorrect information contained on this site.
Please visit <http://www.erudus.com/terms-and-conditions> for full terms and conditions.