

# All Butter Croissant

Butter Croissant

## PRODUCT DESCRIPTION

An unbaked, frozen, pre proved all-butter croissant with a traditional crescent shape, rich, buttery taste and light open texture combined with crisp outer layers to give a truly authentic taste. Product Supplied frozen.

<b>Brand</b>	Lantmannen Unibake
<b>Manufacturer Product Code</b>	5790008022 (Q022)
<b>Product Type</b>	Food
<b>Product Category</b>	Croissants, Brioche & Pastries
<b>Storage Type</b>	Frozen
<b>Erudus ID</b>	3a329eaa74d24260961a77155dd0a4b4
<b>Specification Type</b>	Bakery Products



**Outer Case GTIN** 05413056006226



## INGREDIENTS

### Ingredient Declaration

Dough: WHEAT Flour (WHEAT Gluten), Butter (MILK) (20.6%), Water, Yeast, Sugar, Salt, Baking Improver (WHEAT Gluten, WHEAT Flour, Flour Treatment Agent (Ascorbic Acid E300), enzyme), EGG. Topping: EGG Wash.

## ALLERGENS

Product Contains:

<b>Celery/Celeriac</b>	No	<b>Mustard</b>	No
<b>Cereals Containing Gluten</b>	Yes	<b>Nuts (Tree)</b>	May Contain
<b>Barley</b>	No	<b>Almond nuts</b>	May Contain
<b>Oats</b>	No	<b>Brazil nuts</b>	No
<b>Rye</b>	No	<b>Cashew nuts</b>	No
<b>Wheat (including Spelt and Khorasan)</b>	Yes	<b>Hazelnuts</b>	May Contain
<b>Crustacea</b>	No	<b>Macadamia (Queensland) nuts</b>	No
<b>Eggs</b>	Yes	<b>Pecan nuts</b>	No
<b>Fish</b>	No	<b>Pistachio nuts</b>	No
<b>Lupin</b>	No	<b>Walnuts</b>	No
<b>Milk</b>	Yes	<b>Peanuts</b>	No
<b>Molluscs</b>	No	<b>Sesame Seeds</b>	No
		<b>Soybeans</b>	May Contain
		<b>Sulphur Dioxide and Sulphites</b>	No

Risk Source:

<b>Soybeans (Risk Source)</b>	Line
-------------------------------	------

### Additional Allergen Information

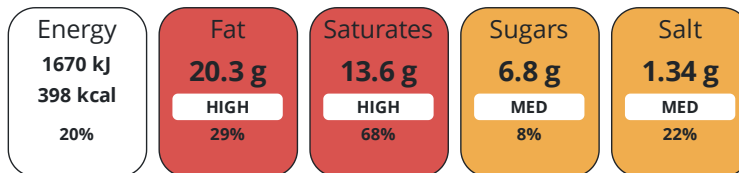
May contain traces of nuts and soya.

## DIET SUITABILITY

<b>Vegan Diet</b>	No	<b>Vegetarian Diet</b>	Suitable for
<b>Halal Diet</b>	Certified	<b>Kosher Diet</b>	No

NUTRITIONAL  
INFORMATION

Each 100g/ml portion contains:



of your reference intake.

Typical values per 100g/ml : Energy 398kcal / 1670kJ

Nutrient	per 100g	RI per 100g	per 56g serving	RI per 56g serving
Energy (kJ)	1670 kJ	20%	935.2 kJ	11%
Energy (kcal)	398 kcal	20%	222.9 kcal	11%
Fat	20.3 g	29%	11.4 g	16%
of which Saturates	13.6 g	68%	7.6 g	38%
of which Mono-unsaturates	4.98 g		2.8 g	
of which Polyunsaturates	0.68 g		0.4 g	
Carbohydrate	45.4 g	17%	25.4 g	10%
of which Sugars	6.8 g	8%	3.8 g	4%
Fibre	3.5 g		2 g	
Protein	8.3 g	17%	4.6 g	9%
Salt	1.34 g	22%	0.8 g	13%
Sodium	527 mg		295.1 mg	

Serving Size 56 g

HANDLING &  
STORAGE  
INFORMATION

Directions For Use

Bake for 18 minutes at 190°C

Storage Instructions

Keep frozen at -18°C or below

ORIGIN

Product Country of Origin/Place of Origin Belgium

Provenance

Additional Origin Details

N/A

CONTACT  
INFORMATION

Address

Lantmannen Unibake  
Maidstone Road  
Kingston  
Milton Keynes  
MK10 0BD  
England

Technical Contact

Inesa Jegoroviene  
Senior Specifications Technologist  
inesa.jegoroviene@lantmanen.com

P: (Phone) 07885418956

P: (Phone) 07780837112

Complaints Contact

Ursula Jaillet  
Technical Coordinator  
unibakeuk.technicalservices@lantmannen.com

The information on the [Erudus System](#) has been supplied by the manufacturers of the products and, whilst the owners of the Erudus System take steps to ensure the information is regularly updated, they give no warranty and no guarantee that the information is accurate. Product information and ingredients may change, please always read product labels carefully in addition to using the information provided by Erudus.

We do not accept liability for any inaccuracies or incorrect information contained on this site.  
Please visit <http://www.erudus.com/terms-and-conditions> for full terms and conditions.