

Changed Nov 05, 2024 11:44

Reviewed Nov 05, 2024 11:44

Erudus ID d4f76321eced486b8119c7d80443fec7

Version 2.0

Kingsmill Professional Great White Bloomer 700g

White Bread With Sourdough 6x700g

PRODUCT DESCRIPTION

White Bread with Sourdough

Brand	Allied Bakeries
Manufacturer Product Code	8173
Product Type	Food
Product Category	Bread Loaves
Storage Type	Frozen
Erudus ID	d4f76321eced486b8119c7d80443fec7
Specification Type	Bakery Products
Inner Component GTIN	5010092817313
Outer Case GTIN	05010092808816



INGREDIENTS

Ingredient Declaration

WHEAT Flour (with calcium, iron, niacin (B3) and thiamin (B1)), Water, Yeast, WHEAT and RYE Sourdough (1.5%), WHEAT Protein, Fermented WHEAT Flour, Salt, WHEAT Fibre, Vinegar, Sustainable SOYA Flour, Vegetable Oils (Rapeseed, Sustainable Palm), Dried Malted WHEAT Sourdough, WHEAT Semolina, WHEAT Starch, Flour Treatment Agent: Ascorbic Acid (Vitamin C).

ALLERGENS

Product Contains:

Celery/Celeriac	No	Mustard	No
Cereals Containing Gluten	Yes	Nuts (Tree)	No
Barley	No	Almond nuts	No
Oats	No	Brazil nuts	No
Rye	Yes	Cashew nuts	No
Wheat (including Spelt and Khorasan)	Yes	Hazelnuts	No
Crustacea	No	Macadamia (Queensland) nuts	No
Eggs	No	Pecan nuts	No
Fish	No	Pistachio nuts	No
Lupin	No	Walnuts	No
Milk	No	Peanuts	No
Molluscs	No	Sesame Seeds	No
		Soybeans	Yes
		Sulphur Dioxide and Sulphites	No

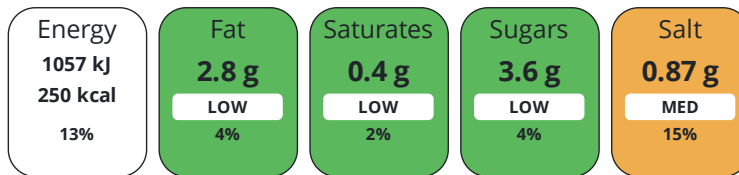
Additional Allergen Information

n/a

DIET SUITABILITY

Vegan Diet	Suitable for	Vegetarian Diet	Suitable for
Halal Diet	Suitable for	Kosher Diet	Suitable for

Each 100g/ml portion contains:



of your reference intake.

Typical values per 100g/ml : Energy 250kcal / 1057kJ

Nutrient	per 100g	RI per 100g	per 50g serving	RI per 50g serving
Energy (kJ)	1057 kJ	13%	528.5 kJ	6%
Energy (kcal)	250 kcal	13%	125 kcal	6%
Fat	2.8 g	4%	1.4 g	2%
of which Saturates	0.4 g	2%	0.2 g	1%
Carbohydrate	45.7 g	18%	22.9 g	9%
of which Sugars	3.6 g	4%	1.8 g	2%
Fibre	3.2 g		1.6 g	
Protein	8.9 g	18%	4.5 g	9%
Salt	0.87 g	15%	0.4 g	7%
Sodium	350 mg		175 mg	

Serving Size 50 g

Directions For Use

Keep Frozen: Store at -18°C or below. Defrost Instructions: Allow to defrost in a dry, clean environment at room temperature for approximately 2-3 hours or until fully defrosted. After defrosting, store in a cool dry place and use within 5 days. Once opened reseal bag to retain freshness. Once defrosted do not re-freeze..

Storage Instructions

Keep Frozen: Store at -18°C or below. Defrost Instructions: Allow to defrost in a dry, clean environment at room temperature for approximately 2-3 hours or until fully defrosted. After defrosting, store in a cool dry place and use within 5 days. Once opened reseal bag to retain freshness. Once defrosted do not re-freeze.

Product Country of Origin/Place of United Kingdom

Provenance

Additional Origin Details

Produced in the UK. The primary ingredient, wheat flour (50-60% of finished product), is UK milled from predominantly UK wheat.

CONTACT
INFORMATION

Address

Allied Bakeries
1 Vanwall Place
Vanwall Business Park
Maidenhead
SL6 4UF
United Kingdom

Technical Contact

Laura Hodgson
Head of Technical
TechnicalStandards@atcentre.co.uk

Complaints Contact

Allied Bakeries Team
Consumer Services
consumer.services@alliedbakeries.co.uk

P: (Phone) 0800 197 0110

The information on the [Erudus System](#) has been supplied by the manufacturers of the products and, whilst the owners of the Erudus System take steps to ensure the information is regularly updated, they give no warranty and no guarantee that the information is accurate. Product information and ingredients may change, please always read product labels carefully in addition to using the information provided by Erudus.

We do not accept liability for any inaccuracies or incorrect information contained on this site.
Please visit <http://www.erudus.com/terms-and-conditions> for full terms and conditions.