

Changed Feb 14, 2025 12:57

Reviewed Feb 14, 2025 12:57

Erudus ID dd79077e64194b4a8fcee46dd658b98c

Version 2.0

Riverdene Chopped Tomatoes 6 x 2.5kg Italy and Greece

Riverdene Premium Chopped Tomatoes 6 X 2.5kg 6x2500g

PRODUCT DESCRIPTION

Canned chopped tomatoes in tomato juice

| | |
|----------------------------------|----------------------------------|
| Brand | Martin Mathew & Co Ltd |
| Manufacturer Product Code | A26100 |
| Manufacturer Version | 1 |
| Number | |
| Product Type | Food |
| Product Category | Other |
| Storage Type | Ambient |
| Erudus ID | dd79077e64194b4a8fcee46dd658b98c |
| Specification Type | Generic |
| Inner Component GTIN | 5017482001864 |
| Outer Case GTIN | 15017482001861 |



INGREDIENTS

Ingredient Declaration

Tomato, Tomato juice concentrate, Citric acid

ALLERGENS

Product Contains:

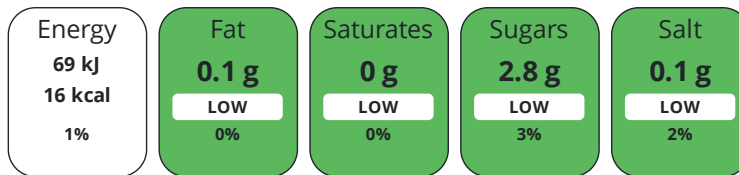
| | | | |
|---|----|--------------------------------------|----|
| Celery/Celeriac | No | Mustard | No |
| Cereals Containing Gluten | No | Nuts (Tree) | No |
| Barley | No | Almond nuts | No |
| Oats | No | Brazil nuts | No |
| Rye | No | Cashew nuts | No |
| Wheat (including Spelt and Khorasan) | No | Hazelnuts | No |
| Crustacea | No | Macadamia (Queensland) nuts | No |
| Eggs | No | Pecan nuts | No |
| Fish | No | Pistachio nuts | No |
| Lupin | No | Walnuts | No |
| Milk | No | Peanuts | No |
| Molluscs | No | Sesame Seeds | No |
| | | Soybeans | No |
| | | Sulphur Dioxide and Sulphites | No |

DIET SUITABILITY

| | | | |
|-------------------|--------------|------------------------|--------------|
| Vegan Diet | Suitable for | Vegetarian Diet | Suitable for |
| Halal Diet | Suitable for | Kosher Diet | Suitable for |

NUTRITIONAL
INFORMATION

Each 100g/ml portion contains:



of your reference intake.

Typical values per 100g/ml : Energy 16kcal / 69kJ

| Nutrient | per 100g | RI per 100g | per 60g serving | RI per 60g serving |
|---------------------------|----------|-------------|-----------------|--------------------|
| Energy (kJ) | 69 kJ | 1% | 41.4 kJ | 0% |
| Energy (kcal) | 16 kcal | 1% | 9.6 kcal | 0% |
| Fat | 0.1 g | 0% | 0.1 g | 0% |
| of which Saturates | 0 g | 0% | - | |
| of which Mono-unsaturates | 0 g | | - | |
| of which Polyunsaturates | 0 g | | - | |
| Carbohydrate | 3 g | 1% | 1.8 g | 1% |
| of which Sugars | 2.8 g | 3% | 1.7 g | 2% |
| of which Polyols | 0 g | | - | |
| of which Starch | 0 g | | - | |
| Fibre | 0.7 g | | 0.4 g | |
| Protein | 1 g | 2% | 0.6 g | 1% |
| Salt | 0.1 g | 2% | 0.1 g | 2% |
| Sodium | 0 mg | | - | |

Serving Size 60 g

HANDLING &
STORAGE
INFORMATION

Directions For Use

Open can , use as required. If not all used, store in a refrigerated non-metallic container for a maximum 2 days

Storage Instructions

Dry ambient

Storage Instructions After Opening

Once opened store refrigerated and use within 3 days

ORIGIN

Product Country of Origin/Place of Greece, Italy

Provenance

Additional Origin Details

N/A

Address

Martin Mathew & Co Ltd

50a St Andrew Street

Hertford

Herts

SG14 1JA

United Kingdom

P: (Phone) 01992641641

CONTACT
INFORMATION

The information on the [Erudus System](#) has been supplied by the manufacturers of the products and, whilst the owners of the Erudus System take steps to ensure the information is regularly updated, they give no warranty and no guarantee that the information is accurate. Product information and ingredients may change, please always read product labels carefully in addition to using the information provided by Erudus.

We do not accept liability for any inaccuracies or incorrect information contained on this site.
Please visit <http://www.erudus.com/terms-and-conditions> for full terms and conditions.