

700159

ROCKY ROAD (1 x 12 ptn)

Rocky Road 1x1000g

PRODUCT DESCRIPTION

Digestive biscuits, vegetarian mini marshmallows and raisins bound together in a chocolate fudge mixture and topped with icing sugar.

Brand	The Handmade Cake Co.
Manufacturer Product Code	072833
Product Type	Food
Product Category	Bakery - General
Storage Type	Frozen
Erudus ID	0e4a2b637dc641a5b1b3ac901d3eb384
Specification Type	Legacy



Outer Case GTIN 5060044072833



INGREDIENTS

Ingredient Declaration

Dark Chocolate (25%) [Cocoa Mass, Sugar, Cocoa Butter, Emulsifier (SOYA Lecithin), Natural Vanilla Flavouring], Digestive Biscuits (25%) [WHEAT Flour (with Calcium Carbonate, Iron, Niacin, Thiamin), Palm Oil, Sugar, Wholemeal WHEAT Flour, Partially Inverted Sugar Syrup, Raising Agents (E500, E503), Salt], Golden Syrup, Pink & White Mini Marshmallows (10%) [Glucose Syrup, Sugar, Water, Tapioca Starch, Gelling Agent (Carrageenan), SOYA Protein, Natural Vanilla Flavouring, Beetroot Juice], Sweetened Condensed MILK, Vegetable Margarine [Palm Oil, Rapeseed Oil, Water, Salt, Emulsifier (E471), Natural Flavouring], Raisins (5%), Fat Reduced Cocoa Powder, Icing Sugar.

ALLERGENS

Product Contains:

Celery/Celery	No	Mustard	No
Cereals Containing Gluten	Yes	Nuts (Tree)	May Contain
Barley	No	Almond nuts	May Contain
Oats	No	Brazil nuts	May Contain
Rye	No	Cashew nuts	May Contain
Wheat (including Spelt and Khorasan)	Yes	Hazelnuts	May Contain
Gluten content <20ppm	No	Macadamia (Queensland) nuts	May Contain
Crustacea	No	Pecan nuts	May Contain
Eggs	May Contain	Pistachio nuts	May Contain
Fish	No	Walnuts	May Contain
Lupin	No	Peanuts	No
Milk	Yes	Sesame Seeds	No
Molluscs	No	Soybeans	Yes
		Sulphur Dioxide and Sulphites	No

Risk Source:

Additional Allergen Information

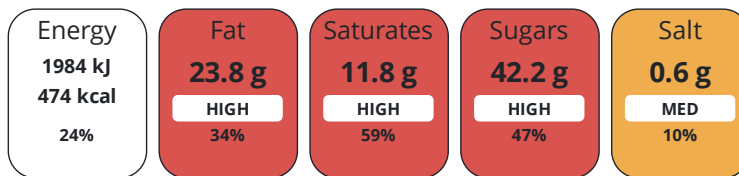
For allergens, including cereals containing gluten, see ingredients in BOLD. This product may contain traces of nuts and eggs as it has been made in a bakery that uses these ingredients.

DIET
SUITABILITY

Suitable for Coeliacs	No	Halal Diet	No
Kosher Diet	No	Vegetarian Diet	Suitable for
Vegan Diet	No		

NUTRITIONAL
INFORMATION

Each 100g/ml portion contains:



of your reference intake.

Typical values per 100g/ml : Energy 474kcal / 1984kJ

Nutrient	per 100g/ml	RI per 100g/ml	per 80g/ml serving	RI per 80g/ml serving
Energy (kJ)	1984 kJ	24%	1587.2 kJ	19%
Energy (kcal)	474 kcal	24%	379.2 kcal	19%
Fat	23.8 g	34%	19 g	27%
of which Saturates	11.8 g	59%	9.4 g	47%
Carbohydrate	58.1 g	22%	46.5 g	18%
of which Sugars	42.2 g	47%	33.8 g	38%
Fibre	4.2 g		3.4 g	
Protein	4.8 g	10%	3.8 g	8%
Salt	0.6 g	10%	0.5 g	8%
Sodium	240 mg		192 mg	

Serving Size 80 g

HANDLING &
STORAGE
INFORMATION

Directions For Use

Defrost in the plastic wrap at room temperature for 1 hour. Re-cut around portions with a sharp knife. Remove portions from the tray and continue to defrost for 1 additional hour. Refresh with icing sugar before serving. Once defrosted store in a cool place, in an airtight container. Do not refreeze once defrosted. Consume within 5 days.

Storage Instructions

Keep frozen, store at -18°C or below.

ORIGIN

Product Country of Origin/Place of United Kingdom

Provenance

CONTACT
INFORMATION

Address

The Handmade Cake Co.
The Bakery
Gardner Road
Maidenhead
Berkshire
SL6 7TU
United Kingdom

P: (Phone) 01628 770908

Complaints Contact

Technical Team
Maidenhead.Technical@mdesserts.com

P: (Phone) 01628 770908 Ext. 1052

Technical Contact

Technical Team
Maidenhead.Technical@mdesserts.com

P: (Phone) 01628 770908 Ext. 1052

The information on the [Erudus System](#) has been supplied by the manufacturers of the products and, whilst the owners of the Erudus System take steps to ensure the information is regularly updated, they give no warranty and no guarantee that the information is accurate. Product information and ingredients may change, please always read product labels carefully in addition to using the information provided by Erudus.

We do not accept liability for any inaccuracies or incorrect information contained on this site.
Please visit <http://www.erudus.com/terms-and-conditions> for full terms and conditions.