

# Yorkie Raisin & Biscuit Chocolate Bar 24x44g

Yorkie Raisin & Biscuit Chocolate Bar 36x

## PRODUCT DESCRIPTION

Chunky milk chocolate with raisins (13%) and biscuits (4%)

<b>Brand</b>	Nestle UK
<b>Manufacturer Product Code</b>	12360869
<b>Product Type</b>	Food
<b>Product Category</b>	Confectionery
<b>Storage Type</b>	Ambient
<b>Erudus ID</b>	6c8f98d94b2348c4af96e6b7b282af38
<b>Specification Type</b>	Legacy
<b>Inner Component GTIN</b>	07613034872593
<b>Outer Case GTIN</b>	07613036397810



## INGREDIENTS

### Ingredient Declaration

Milk chocolate (Sugar, Dried whole **MILK**, Cocoa butter, Cocoa mass, Vegetable fats (Palm/ Mango kernel/ Sal/ Shea), Lactose and proteins from whey (from **MILK**),  
 Whey powder (from **MILK**), Skimmed **MILK** powder, Butterfat (from **MILK**), Emulsifier (Sunflower lecithin)), Raisins, Biscuit (**WHEAT** flour (contains Calcium, Iron, Thiamin and Niacin), Sugar, Vegetable fats (Palm, Rapeseed), Partially inverted refiners' syrup, Modified starch, Raising agents (Ammonium bicarbonate, Sodium bicarbonate), Salt).

## ALLERGENS

Product Contains:

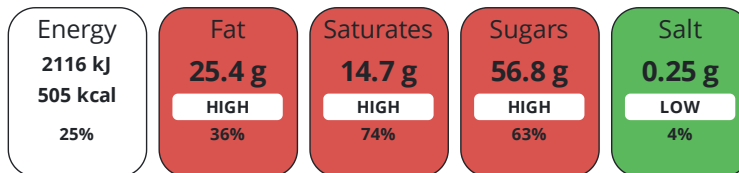
<b>Celery/Celeriac</b>	No	<b>Mustard</b>	No
<b>Cereals Containing Gluten</b>	Yes	<b>Nuts (Tree)</b>	No
<b>Barley</b>	No	<b>Almond nuts</b>	No
<b>Oats</b>	No	<b>Brazil nuts</b>	No
<b>Rye</b>	No	<b>Cashew nuts</b>	No
<b>Wheat (including Spelt and Khorasan)</b>	Yes	<b>Hazelnuts</b>	No
<b>Gluten content &lt;20ppm</b>	No	<b>Macadamia (Queensland) nuts</b>	No
<b>Crustacea</b>	No	<b>Pecan nuts</b>	No
<b>Eggs</b>	No	<b>Pistachio nuts</b>	No
<b>Fish</b>	No	<b>Walnuts</b>	No
<b>Lupin</b>	No	<b>Peanuts</b>	No
<b>Milk</b>	Yes	<b>Sesame Seeds</b>	No
<b>Molluscs</b>	No	<b>Soybeans</b>	No
		<b>Sulphur Dioxide and Sulphites</b>	No

## DIET SUITABILITY

<b>Suitable for Coeliacs</b>	No	<b>Halal Diet</b>	No
<b>Kosher Diet</b>	No	<b>Vegetarian Diet</b>	Suitable for
<b>Vegan Diet</b>	No		

NUTRITIONAL  
INFORMATION

Each 100g/ml portion contains:



of your reference intake.

Typical values per 100g/ml : Energy 505kcal / 2116kJ

Nutrient	per 100g/ml	RI per 100g/ml
Energy (kJ)	2116 kJ	25%
Energy (kcal)	505 kcal	25%
Fat	25.4 g	36%
of which Saturates	14.7 g	74%
Carbohydrate	60.2 g	23%
of which Sugars	56.8 g	63%
Fibre	2 g	
Protein	6.2 g	12%
Salt	0.25 g	4%

HANDLING &  
STORAGE  
INFORMATION

**Directions For Use**

Ready to Eat

**Storage Instructions**

Store cool and dry

ORIGIN

**Product Country of Origin/Place of** United Kingdom

**Provenance**

Address

Nestle UK  
Nestlé UK Ltd  
PO Box 207  
York  
YO91 1WS  
England

P: (Phone) 0800 00 00 30 (UK)

Complaints Contact

consumer.services@uk.nestle.com

P: (Phone) 0800 00 00 30 (UK)

CONTACT  
INFORMATION

The information on the [Erudus System](#) has been supplied by the manufacturers of the products and, whilst the owners of the Erudus System take steps to ensure the information is regularly updated, they give no warranty and no guarantee that the information is accurate. Product information and ingredients may change, please always read product labels carefully in addition to using the information provided by Erudus.

We do not accept liability for any inaccuracies or incorrect information contained on this site.  
Please visit <http://www.erudus.com/terms-and-conditions> for full terms and conditions.