

Changed Feb 22, 2022 10:35

Reviewed Feb 22, 2024 14:06

Erudus ID bca8fc16de7345788a94c33f9093b9a7

Version 1.0

This specification is published by [Erudus](#) for Country Range Group

Assorted Jam Portions

Assorted Jam Portions (Multipack)

PRODUCT DESCRIPTION

N/A

Brand	Country Range Group
Label Own Label Code	A90801
Product Type	Food
Product Category	Preserves and Spreads
Storage Type	Ambient
Erudus ID	bca8fc16de7345788a94c33f9093b9a7
Specification Type	Legacy



Raspberry Jam Portion

Manufacturer Component Code	A90801RASP
Outer Case GTIN	05023616433906



INGREDIENTS

Ingredient Declaration

Fructose-Glucose Syrup, Raspberries, Sugar, Gelling Agent (Pectin), Acidity Regulator (Citric Acid).

ALLERGENS

Product Contains:

Celery/Celery	No	Mustard	No
Cereals Containing Gluten	No	Nuts (Tree)	No
Barley	No	Almond nuts	No
Oats	No	Brazil nuts	No
Rye	No	Cashew nuts	No
Wheat (including Spelt and Khorasan)	No	Hazelnuts	No
Gluten content <20ppm	Yes	Macadamia (Queensland) nuts	No
Crustacea	No	Pecan nuts	No
Eggs	No	Pistachio nuts	No
Fish	No	Walnuts	No
Lupin	No	Peanuts	No
Milk	No	Sesame Seeds	No
Molluscs	No	Soybeans	No
		Sulphur Dioxide and Sulphites	No
Palm Oil	No	Alcoholic Strength %Vol (ABV)	0 % Vol
Hydrogenated Vegetable Oil/Fat	No		
GM Protein/DNA	No		

SUPPLEMENTARY INGREDIENT INFORMATION

ADDITIVES

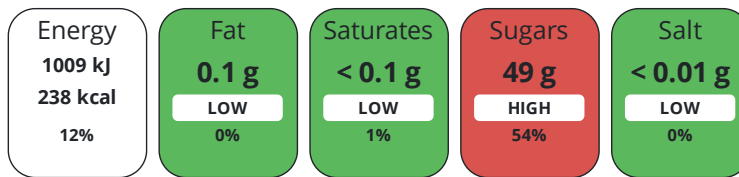
Product Contains:

Artificial Antioxidants	No	Artificial Flavourings	No
Artificial Colours	No	Artificial Preservatives	No
Artificial Flavour Enhancers	No	Artificial Sweeteners	No
Suitable for Coeliacs	Yes	Halal Diet	No
Kosher Diet	No	Vegetarian Diet	Suitable for
Vegan Diet	Suitable for		

DIET SUITABILITY

NUTRITIONAL INFORMATION

Each 100g/ml portion contains:



of your reference intake.

Typical values per 100g/ml : Energy 238kcal / 1009kj

Nutrient	per 100g/ml	RI per 100g/ml	per 20g/ml serving	RI per 20g/ml serving
Energy (kJ)	1009 kJ	12%	201.8 kJ	2%
Energy (kcal)	238 kcal	12%	47.6 kcal	2%
Fat	0.1 g	0%	-	
of which Saturates	< 0.1 g	1%	-	
of which Mono-unsaturates	< 0.1 g		-	
of which Polyunsaturates	< 0.1 g		-	
Carbohydrate	58 g	22%	11.6 g	4%
of which Sugars	49 g	54%	9.8 g	11%
of which Polyols	0 g		-	
of which Starch	0 g		-	
Fibre	1.4 g		0.3 g	
Protein	0.5 g	1%	0.1 g	0%
Salt	< 0.01 g	0%	-	
Sodium	< 0.01 mg		-	
Serving Size	20 g			

VITAMINS AND MINERALS

Nutrient	per 100g/ml	RI per 100g/ml	per 20g/ml serving	RI per 20g/ml serving
Vitamin A	0 µg	0%	-	
Vitamin C	10 mg	13%	2 mg	3%
Folate/Folic Acid	0 µg	0%	-	
Calcium	12 mg	2%	2.4 mg	0%
Iron	0.2 mg	1%	-	
Zinc	0.1 mg	1%	-	

SUPPLEMENTARY NUTRITIONAL INFORMATION

Cholesterol per 100 g/ml (UK/FR)	0 g
Trans Fats per 100 g/ml	0 g
Non Milk Extrinsic Sugars per 100 g/ml	49 g

HANDLING & STORAGE INFORMATION

Directions For Use

Ready To Use

Storage Instructions

Store in a cool, dry place.

Shelf Life from Time of Production 540 Days

ACCREDITATIONS/ CERTIFICATIONS/ ASSURANCE SCHEMES ORIGIN

BRCGS Certified

Product Country of Origin/Place of Italy

Provenance

PRODUCT CHARACTERISTICS

Standards Testing

Do you undertake trend analysis of microbiological results? No

Is shelf life testing undertaken? No

CONFIGURATION

Case Configuration

Inner Pack Configuration

Total Quantity of Inner Components in Outer Case 100 Units

Is the Outer Case Splittable? No

PRODUCT WEIGHTS

Inner Component

Variable Weight Consumer Item No

Weight/Volume

20g per portion

Outer Case

Outer Case Gross Weight 0 kg

Outer Case Net Weight 0.12 kg

PRODUCT DIMENSIONS

Inner Component

Inner Component Depth 56 mm

Inner Component Width 18 mm

Inner Component Height 39 mm

Outer Case

Outer Case Depth 240 mm

Outer Case Width 195 mm

Outer Case Height 115 mm

PALLET INFORMATION

Quantity of Cases Per Pallet Layer 24 Cases

Pallet Height 1.4 MTR

Quantity of Layers Per Pallet 14 Layers

Pallet Gross Weight 750 kg

Quantity of Cases Per Pallet 336 Cases

PACKAGING

Inner Component Packaging

Type	Materials	Weight	Recycled Plastic %	Recyclable	Returnable	Composite
Pot	Plastic	5 g	- %			

Outer Case Packaging

Type	Materials	Weight	Recycled Plastic %	Recyclable	Returnable	Composite
Case	Plastic	120 g	- %			

Transport Packaging

Type	Materials	Weight	Recycled Plastic %	Recyclable	Returnable	Composite
Other	Plastic	500 g	- %		Yes	

OTHER
INFORMATION

Manufacturer Comments

No

Strawberry Jam Portion

Manufacturer Component Code

A90801STRAW

Outer Case GTIN

05023616433906



INGREDIENTS

Ingredient Declaration

Fructose-Glucose Syrup, Strawberries, Sugar, Gelling Agent (Pectin), Acidity Regulator (Citric Acid), Concentrated Elderberry Juice.

ALLERGENS

Product Contains:

Celery/Celeriac	No	Mustard	No
Cereals Containing Gluten	No	Nuts (Tree)	No
Barley	No	Almond nuts	No
Oats	No	Brazil nuts	No
Rye	No	Cashew nuts	No
Wheat (including Spelt and Khorasan)	No	Hazelnuts	No
Gluten content <20ppm	Yes	Macadamia (Queensland) nuts	No
Crustacea	No	Pecan nuts	No
Eggs	No	Pistachio nuts	No
Fish	No	Walnuts	No
Lupin	No	Peanuts	No
Milk	No	Sesame Seeds	No
Molluscs	No	Soybeans	No
		Sulphur Dioxide and Sulphites	No

SUPPLEMENTARY INGREDIENT INFORMATION

Palm Oil	No	Alcoholic Strength %Vol (ABV)	0 % Vol
Hydrogenated Vegetable Oil/Fat	No		
GM Protein/DNA	No		

ADDITIVES

Product Contains:

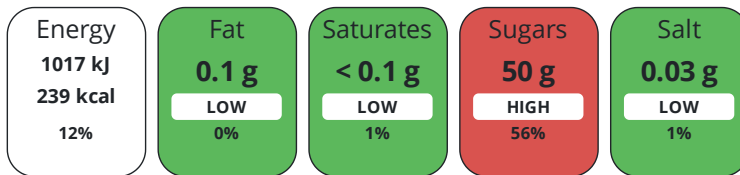
Artificial Antioxidants	No	Artificial Flavourings	No
Artificial Colours	No	Artificial Preservatives	No
Artificial Flavour Enhancers	No	Artificial Sweeteners	No

DIET SUITABILITY

Suitable for Coeliacs	Yes	Halal Diet	No
Kosher Diet	No	Vegetarian Diet	Suitable for
Vegan Diet	Suitable for		

NUTRITIONAL INFORMATION

Each 100g/ml portion contains:



of your reference intake.

Typical values per 100g/ml : Energy 239kcal / 1017kJ

Nutrient	per 100g/ml	RI per 100g/ml	per 20g/ml serving	RI per 20g/ml serving
Energy (kJ)	1016.6 kJ	12%	203.3 kJ	2%
Energy (kcal)	239.3 kcal	12%	47.9 kcal	2%
Fat	0.1 g	0%	-	
of which Saturates	< 0.1 g	1%	-	
of which Mono-unsaturates	< 0.1 g		-	
of which Polyunsaturates	< 0.1 g		-	
Carbohydrate	59 g	23%	11.8 g	5%
of which Sugars	50 g	56%	10 g	11%
of which Polyols	0 g		-	
of which Starch	9 g		1.8 g	
Fibre	0.6 g		0.1 g	
Protein	0.3 g	1%	0.1 g	0%
Salt	0.03 g	1%	-	
Sodium	10 mg		2 mg	

Serving Size 20 g

VITAMINS AND MINERALS

Nutrient	per 100g/ml	RI per 100g/ml	per 20g/ml serving	RI per 20g/ml serving
Vitamin A	0 µg	0%	-	
Vitamin C	10 mg	13%	2 mg	3%
Folate/Folic Acid	0 µg	0%	-	
Calcium	12 mg	2%	2.4 mg	0%
Iron	0.2 mg	1%	-	
Zinc	0.1 mg	1%	-	

SUPPLEMENTARY NUTRITIONAL INFORMATION

Cholesterol per 100 g/ml (UK/FR)	0 g
Trans Fats per 100 g/ml	0 g
Non Milk Extrinsic Sugars per 100 g/ml	50 g

HANDLING & STORAGE INFORMATION

Directions For Use

Ready to use.

Storage Instructions

Store in a cool, dry place.

Shelf Life from Time of Production 540 Days

ACCREDITATIONS/ CERTIFICATIONS/ ASSURANCE SCHEMES ORIGIN

BRCGS Certified

Product Country of Origin/Place of Italy

Provenance

PRODUCT CHARACTERISTICS

Standards Testing

Do you undertake trend analysis of microbiological results? No

Is shelf life testing undertaken? No

CONFIGURATION	Case Configuration	Inner Pack Configuration						
PRODUCT WEIGHTS	Total Quantity of Inner Components in Outer Case	100 Units						
	Is the Outer Case Splittable?	No						
	Inner Component	Variable Weight Consumer Item						
	Weight/Volume	20g per portion						
PRODUCT DIMENSIONS	Outer Case	Outer Case Gross Weight						
		0 kg						
		Outer Case Net Weight						
		0.12 kg						
	Inner Component	Inner Component Depth						
		56 mm						
	Inner Component Width							
	18 mm							
	Inner Component Height							
	39 mm							
PALLET INFORMATION	Outer Case	Outer Case Depth						
		240 mm						
		Outer Case Width						
		195 mm						
		Outer Case Height						
	115 mm							
	Quantity of Cases Per Pallet Layer	24 Cases	Pallet Height	1.4 MTR				
	Quantity of Layers Per Pallet	14 Layers	Pallet Gross Weight	750 kg				
	Quantity of Cases Per Pallet	336 Cases						
PACKAGING	Inner Component Packaging							
	Type	Materials	Weight	Recycled Plastic %	Recyclable	Returnable	Composite	
	Pot	Plastic	150 g	- %				
	Outer Case Packaging							
	Type	Materials	Weight	Recycled Plastic %	Recyclable	Returnable	Composite	
	Case	Plastic	120 g	- %				
	Transport Packaging							
	Type	Materials	Weight	Recycled Plastic %	Recyclable	Returnable	Composite	
	Other	Plastic	500 g	- %		Yes		
	OTHER INFORMATION	Manufacturer Comments						
		No						

Apricot Jam Portion

Manufacturer Component Code

A90801APRI

Outer Case GTIN

05023616433906



INGREDIENTS

Ingredient Declaration

Glucose-Fructose Syrup, Apricots, Sugar, Gelling Agent (Pectin), Acidity Regulator (Citric Acid).

ALLERGENS

Product Contains:

Celery/Celeriac	No	Mustard	No
Cereals Containing Gluten	No	Nuts (Tree)	No
Barley	No	Almond nuts	No
Oats	No	Brazil nuts	No
Rye	No	Cashew nuts	No
Wheat (including Spelt and Khorasan)	No	Hazelnuts	No
Gluten content <20ppm	Yes	Macadamia (Queensland) nuts	No
Crustacea	No	Pecan nuts	No
Eggs	No	Pistachio nuts	No
Fish	No	Walnuts	No
Lupin	No	Peanuts	No
Milk	No	Sesame Seeds	No
Molluscs	No	Soybeans	No
		Sulphur Dioxide and Sulphites	No

SUPPLEMENTARY INGREDIENT INFORMATION

Palm Oil	No	Alcoholic Strength %Vol (ABV)	0 % Vol
Hydrogenated Vegetable Oil/Fat	No		
GM Protein/DNA	No		

ADDITIVES

Product Contains:

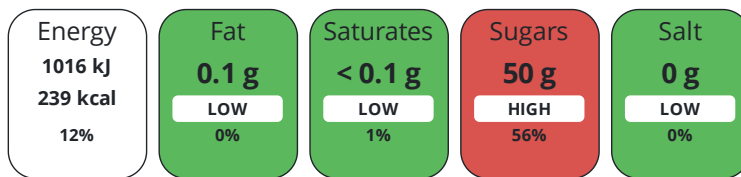
Artificial Antioxidants	No	Artificial Flavourings	No
Artificial Colours	No	Artificial Preservatives	No
Artificial Flavour Enhancers	No	Artificial Sweeteners	No

DIET SUITABILITY

Suitable for Coeliacs	Yes	Halal Diet	No
Kosher Diet	No	Vegetarian Diet	Suitable for
Vegan Diet	Suitable for		

NUTRITIONAL INFORMATION

Each 100g/ml portion contains:



of your reference intake.

Typical values per 100g/ml : Energy 239kcal / 1016kJ

Nutrient	per 100g/ml	RI per 100g/ml	per 20g/ml serving	RI per 20g/ml serving
Energy (kJ)	1016 kJ	12%	203.2 kJ	2%
Energy (kcal)	239 kcal	12%	47.8 kcal	2%
Fat	0.1 g	0%	-	
of which Saturates	< 0.1 g	1%	-	
of which Mono-unsaturates	< 0.1 g		-	
of which Polyunsaturates	< 0.1 g		-	
Carbohydrate	59 g	23%	11.8 g	5%
of which Sugars	50 g	56%	10 g	11%
of which Polyols	0 g		-	
of which Starch	9 g		1.8 g	
Fibre	0.5 g		0.1 g	
Protein	0.3 g	1%	0.1 g	0%
Salt	0 g	0%	-	
Sodium	0 mg		-	

Serving Size 20 g

VITAMINS AND MINERALS

Nutrient	per 100g/ml	RI per 100g/ml	per 20g/ml serving	RI per 20g/ml serving
Vitamin A	0 µg	0%	-	
Vitamin C	10 mg	13%	2 mg	3%
Folate/Folic Acid	0 µg	0%	-	
Calcium	12 mg	2%	2.4 mg	0%
Iron	0.2 mg	1%	-	
Zinc	0.1 mg	1%	-	

SUPPLEMENTARY NUTRITIONAL INFORMATION

Cholesterol per 100 g/ml (UK/FR)	0 g
Trans Fats per 100 g/ml	0 g
Non Milk Extrinsic Sugars per 100 g/ml	50 g

HANDLING & STORAGE INFORMATION

Directions For Use

Ready To Use.

Storage Instructions

Store in a cool, dry place.

Shelf Life from Time of Production 540 Days

ACCREDITATIONS/ CERTIFICATIONS/ ASSURANCE SCHEMES ORIGIN

BRCGS Certified

Product Country of Origin/Place of

Italy

Provenance

PRODUCT CHARACTERISTICS

Standards Testing

Do you undertake trend analysis of microbiological results? No

Is shelf life testing undertaken? No

CONFIGURATION	Case Configuration	Inner Pack Configuration					
CONFIGURATION	Total Quantity of Inner Components in Outer Case	100 Units					
	Is the Outer Case Splittable?	No					
	Inner Component						
PRODUCT WEIGHTS	Variable Weight Consumer Item	No					
	Weight/Volume	20 g per portion					
	Outer Case						
	Outer Case Gross Weight	0 kg					
	Outer Case Net Weight	0.12 kg					
PRODUCT DIMENSIONS	Inner Component						
	Inner Component Depth	59 mm					
	Inner Component Width	18 mm					
	Inner Component Height	39 mm					
	Outer Case						
	Outer Case Depth	240 mm					
	Outer Case Width	195 mm					
	Outer Case Height	115 mm					
PALLET INFORMATION	Quantity of Cases Per Pallet Layer	24 Cases	Pallet Height	1.4 MTR			
	Quantity of Layers Per Pallet	14 Layers	Pallet Gross Weight	750 kg			
	Quantity of Cases Per Pallet	336 Cases					
PACKAGING	Inner Component Packaging						
	Type	Materials	Weight	Recycled Plastic %	Recyclable	Returnable	Composite
	Pot	Plastic	15 g	- %			
	Outer Case Packaging						
	Type	Materials	Weight	Recycled Plastic %	Recyclable	Returnable	Composite
	Case	Plastic	120 g	- %			
	Transport Packaging						
	Type	Materials	Weight	Recycled Plastic %	Recyclable	Returnable	Composite
	Other	Plastic	500 g	- %		Yes	
	OTHER INFORMATION	Manufacturer Comments					
No							

Blackcurrant Jam Portion

Manufacturer Component Code A90801BLACK
 Outer Case GTIN 05023616433906



INGREDIENTS

Ingredient Declaration

Fructose-Glucose Syrup, Blackcurrants, Sugar, Gelling Agent (Pectin), Acidity Regulator (Citric Acid).

ALLERGENS

Product Contains:

Celery/Celeriac	No	Mustard	No
Cereals Containing Gluten	No	Nuts (Tree)	No
Barley	No	Almond nuts	No
Oats	No	Brazil nuts	No
Rye	No	Cashew nuts	No
Wheat (including Spelt and Khorasan)	No	Hazelnuts	No
Gluten content <20ppm	Yes	Macadamia (Queensland) nuts	No
Crustacea	No	Pecan nuts	No
Eggs	No	Pistachio nuts	No
Fish	No	Walnuts	No
Lupin	No	Peanuts	No
Milk	No	Sesame Seeds	No
Molluscs	No	Soybeans	No
		Sulphur Dioxide and Sulphites	No

SUPPLEMENTARY INGREDIENT INFORMATION

Palm Oil	No	Alcoholic Strength %Vol (ABV)	0 % Vol
Hydrogenated Vegetable Oil/Fat	No		
GM Protein/DNA	No		

ADDITIVES

Product Contains:

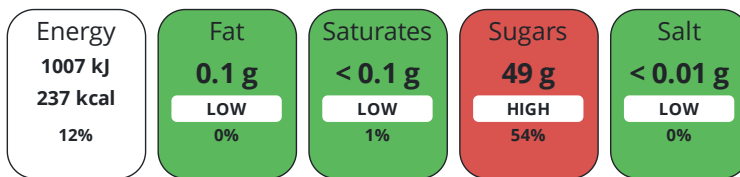
Artificial Antioxidants	No	Artificial Flavourings	No
Artificial Colours	No	Artificial Preservatives	No
Artificial Flavour Enhancers	No	Artificial Sweeteners	No

DIET SUITABILITY

Suitable for Coeliacs	Yes	Halal Diet	No
Kosher Diet	No	Vegetarian Diet	Suitable for
Vegan Diet	Suitable for		

NUTRITIONAL INFORMATION

Each 100g/ml portion contains:



of your reference intake.

Typical values per 100g/ml : Energy 237kcal / 1007kJ

Nutrient	per 100g/ml	RI per 100g/ml	per 20g/ml serving	RI per 20g/ml serving
Energy (kJ)	1007 kJ	12%	201.4 kJ	2%
Energy (kcal)	237 kcal	12%	47.4 kcal	2%
Fat	0.1 g	0%	-	
of which Saturates	< 0.1 g	1%	-	
of which Mono-unsaturates	< 0.1 g		-	
of which Polyunsaturates	< 0.1 g		-	
Carbohydrate	58 g	22%	11.6 g	4%
of which Sugars	49 g	54%	9.8 g	11%
of which Polyols	0 g		-	
of which Starch	9 g		1.8 g	
Fibre	1.5 g		0.3 g	
Protein	0.3 g	1%	0.1 g	0%
Salt	< 0.01 g	0%	-	
Sodium	< 0.01 mg		-	
Serving Size	20 g			

VITAMINS AND MINERALS

Nutrient	per 100g/ml	RI per 100g/ml	per 20g/ml serving	RI per 20g/ml serving
Vitamin A	0 µg	0%	-	
Vitamin C	24 mg	30%	4.8 mg	6%
Folate/Folic Acid	0 µg	0%	-	
Calcium	12 mg	2%	2.4 mg	0%
Iron	0.2 mg	1%	-	
Zinc	0.1 mg	1%	-	

SUPPLEMENTARY NUTRITIONAL INFORMATION

Cholesterol per 100 g/ml (UK/FR)	0 g
Trans Fats per 100 g/ml	0 g
Non Milk Extrinsic Sugars per 100 g/ml	49 g

HANDLING & STORAGE INFORMATION

Directions For Use

Ready to use.

Storage Instructions

Store in a cool, dry place.

Shelf Life from Time of Production 540 Days

ACCREDITATIONS/ CERTIFICATIONS/ ASSURANCE SCHEMES ORIGIN

BRCGS Certified

Product Country of Origin/Place of Italy

Provenance

PRODUCT CHARACTERISTICS

Standards Testing

Do you undertake trend analysis of microbiological results? No

Is shelf life testing undertaken? No

CONFIGURATION

Case Configuration

Inner Pack Configuration

Total Quantity of Inner Components in 100 Units

Outer Case

Is the Outer Case Splittable? No

PRODUCT WEIGHTS

Inner Component

Variable Weight Consumer Item No

Weight/Volume

20g per portion

Outer Case

Outer Case Gross Weight 0 kg

Outer Case Net Weight 0.12 kg

PRODUCT DIMENSIONS

Inner Component

Inner Component Depth 59 mm

Inner Component Width 18 mm

Inner Component Height 39 mm

Outer Case

Outer Case Depth 240 mm

Outer Case Width 195 mm

Outer Case Height 115 mm

PALLET INFORMATION

Quantity of Cases Per Pallet Layer 24 Cases

Pallet Height 1.4 MTR

Quantity of Layers Per Pallet 14 Layers

Pallet Gross Weight 750 kg

Quantity of Cases Per Pallet 336 Cases

PACKAGING

Inner Component Packaging

Type	Materials	Weight	Recycled Plastic %	Recyclable	Returnable	Composite
Pot	Plastic	15 g	- %			
Pot	Glass	0.1 g	- %			

Outer Case Packaging

Type	Materials	Weight	Recycled Plastic %	Recyclable	Returnable	Composite
Case	Plastic	120 g	- %			

Transport Packaging

Type	Materials	Weight	Recycled Plastic %	Recyclable	Returnable	Composite
Other	Plastic	500 g	- %		Yes	

OTHER INFORMATION

Manufacturer Comments

No

CONTACT INFORMATION

ADDRESS

Country Range Group
Accrington
Lancs
United Kingdom

P. (Phone) 0845 209 3777

The information on the [Erudus System](#) has been supplied by the manufacturers of the products and, whilst the owners of the Erudus System take steps to ensure the information is regularly updated, they give no warranty and no guarantee that the information is accurate. Product information and ingredients may change, please always read product labels carefully in addition to using the information provided by Erudus.

We do not accept liability for any inaccuracies or incorrect information contained on this site.
Please visit <http://www.erudus.com/terms-and-conditions> for full terms and conditions.