

Changed Jan 16, 2025 10:20

Reviewed Jan 16, 2025 10:20

Erudus ID 134c9a969d0b43f084f63c4bba155aa4

Version 2.0

002047

# CADBURY CHOCOLATE DRINK 2000G FT 6CA

Cadbury Chocolate Drink 2000g Ft 6x2000g

## PRODUCT DESCRIPTION

Drinking chocolate.

Brand	Mondelez UK Ltd
Manufacturer Product Code	960802
Product Type	Drink
Product Category	Confectionery
Storage Type	Ambient
Erudus ID	134c9a969d0b43f084f63c4bba155aa4
Specification Type	Generic
Inner Component GTIN	05034660022190
Outer Case GTIN	05034660514411



## INGREDIENTS

### Ingredient Declaration

Ingredients: Sugar, cocoa powder, acidity regulator (potassium carbonates), flavouring.

### Ingredient Statements

COCOA SOLIDS 25% MINIMUM.

## ALLERGENS

Product Contains:

<b>Celery/Celериac</b>	No	<b>Mustard</b>	No
<b>Cereals Containing Gluten</b>	No	<b>Nuts (Tree)</b>	No
<b>Barley</b>	No	<b>Almond nuts</b>	No
<b>Oats</b>	No	<b>Brazil nuts</b>	No
<b>Rye</b>	No	<b>Cashew nuts</b>	No
<b>Wheat (including Spelt and Khorasan)</b>	No	<b>Hazelnuts</b>	No
<b>Crustacea</b>	No	<b>Macadamia (Queensland) nuts</b>	No
<b>Eggs</b>	No	<b>Pecan nuts</b>	No
<b>Fish</b>	No	<b>Pistachio nuts</b>	No
<b>Lupin</b>	No	<b>Walnuts</b>	No
<b>Milk</b>	May Contain	<b>Peanuts</b>	No
<b>Molluscs</b>	No	<b>Sesame Seeds</b>	No
		<b>Soybeans</b>	No
		<b>Sulphur Dioxide and Sulphites</b>	No

Risk Source:

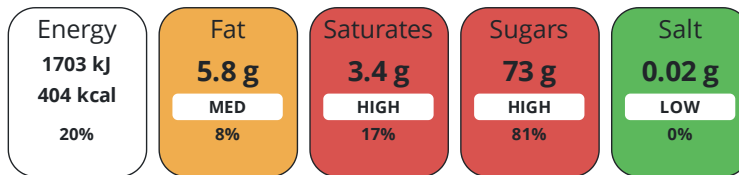
### Additional Allergen Information

Cocoa solids: 25% minimum. MAY CONTAIN MILK.

## DIET SUITABILITY

<b>Vegan Diet</b>	No	<b>Vegetarian Diet</b>	Suitable for
<b>Halal Diet</b>	No	<b>Kosher Diet</b>	No

Each 100g/ml portion contains:



of your reference intake.

Typical values per 100g/ml : Energy 404kcal / 1703kJ

Nutrient	per 100g	RI per 100g
Energy (kJ)	1703 kJ	20%
Energy (kcal)	404 kcal	20%
Fat	5.8 g	8%
of which Saturates	3.4 g	17%
Carbohydrate	76 g	29%
of which Sugars	73 g	81%
Fibre	9.3 g	
Protein	6.4 g	13%
Salt	0.02 g	0%

<b>Serving Size Description</b>	Per serving (24g + 284ml semi-skimmed milk). Approximately 83 - 84 servings per pack.
---------------------------------	--

**Directions For Use**

Preparation Instructions: Add 24 g (1 scoop or 4 tsps) of Cadbury Drinking Chocolate to 15 ml of hot water (approx. 75°C) and mix to create a liquid paste. Add the paste (approx. 30 ml) to a 340 ml mug. Steam 180 ml of semi-skimmed milk using steam arm in another jug to 65°C to 70°C. Pour the foamed milk into the mug and mix with the paste to create a delicious warming mug of Cadbury Hot Chocolate. Preparation Instructions (with 284 ml semi-skimmed milk): Swirl four heaped teaspoons of Cadbury Drinking Chocolate into a mug of hot semi-skimmed milk and stir. Alternatively, mix the powder with cold semi-skimmed milk in a microwaveable mug and heat in a 800 W microwave on high for 1 min, stir then microwave for a further 30 sec. Stir before drinking.

**Storage Instructions**

STORE IN A DRY PLACE. PROTECT FROM HEAT.

**Product Country of Origin/Place of Provenance** United Kingdom

CONTACT  
INFORMATION

Address

Mondelez UK Ltd  
PO Box 12  
Bournville Lane  
Bournville  
Birmingham  
B30 2LU  
England

P: (Phone) +44 1214 582 000

Technical Contact

Tomas Sakalik  
Publication Expert  
tomas.sakalik@mdlz.com

The information on the [Erudus System](#) has been supplied by the manufacturers of the products and, whilst the owners of the Erudus System take steps to ensure the information is regularly updated, they give no warranty and no guarantee that the information is accurate. Product information and ingredients may change, please always read product labels carefully in addition to using the information provided by Erudus.

We do not accept liability for any inaccuracies or incorrect information contained on this site.  
Please visit <http://www.erudus.com/terms-and-conditions> for full terms and conditions.