

1105 Baked Lotus Biscoff Cheesecake Pre-cut 14 Portion

Baked Lotus Biscoff Cheesecake

PRODUCT DESCRIPTION

A crunchy Biscoff biscuit base with a layer of Biscoff spread and a rich smooth cheesecake, finished with Biscoff spread, crumble and dark chocolate drizzle

Brand	Eatons Patisserie
Manufacturer Product Code	BLBCC14
Product Type	Food
Product Category	Desserts
Storage Type	Frozen
Erudus ID	b908e9622b8b4ca39daad747d9545f98
Specification Type	Bakery Products

Outer Case GTIN 5060622440337



INGREDIENTS

Ingredient Declaration

Full Fat Soft Cheese (37%) (Skimmed **MILK**, Cream (**MILK**), Lactic Cultures, Salt, **MILK** Protein, Preservative (Potassium Sorbate E220), Caramelised Biscuit (20%) (**WHEAT** Flour, Sugar, Vegetable Oil (Palm, Rapeseed), Candy Sugar Syrup, Raising Agent (Sodium Hydrogen Carbonate E500ii), **SOYA** Flour, Salt, Cinnamon), Rapeseed Oil, Sugar, Emulsifier (**SOYA** Lecithin), Acidity Regulator (Citric Acid), Pasteurised Free Range Whole **EGG**, Biscoff Crumb (14%) **WHEAT** Flour, Sugar, Vegetable Oil (Palm And Rapeseed), Candy Sugar Syrup, Raising Agent (E500ii Sodium Hydrogen Carbonate), **SOYA** Flour, Salt, Cinnamon, Sugar, Cream (**MILK**), Vegetable Oil (Palm & Rapeseed Oil), Water, Salt, Emulsifier (Distilled Monoglyceride E471), Flavouring, Colouring (Annatto Bixin E160b(i), Curcumin E100), Dark Chocolate [Cocoa Mass, Sugar, Cocoa Butter, Emulsifier (**SOYA** Lecithin), Natural Vanilla Flavouring].

ALLERGENS

Product Contains:

Celery/Celery	No	Mustard	No
Cereals Containing Gluten	Yes	Nuts (Tree)	May Contain
Barley	No	Almond nuts	May Contain
Oats	No	Brazil nuts	No
Rye	No	Cashew nuts	No
Wheat (including Spelt and Khorasan)	Yes	Hazelnuts	May Contain
Crustacea	No	Macadamia (Queensland) nuts	No
Eggs	Yes	Pecan nuts	May Contain
Fish	No	Pistachio nuts	May Contain
Lupin	No	Walnuts	May Contain
Milk	Yes	Peanuts	No
Molluscs	No	Sesame Seeds	No
		Soybeans	Yes
		Sulphur Dioxide and Sulphites	No

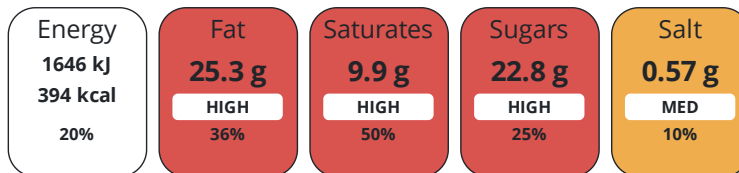
Risk Source:

DIET SUITABILITY

Vegan Diet	No	Vegetarian Diet	Suitable for
Halal Diet	No	Kosher Diet	No

NUTRITIONAL
INFORMATION

Each 100g/ml portion contains:



of your reference intake.

Typical values per 100g/ml : Energy 394kcal / 1646kJ

Nutrient	per 100g	RI per 100g
Energy (kJ)	1646 kJ	20%
Energy (kcal)	394 kcal	20%
Fat	25.3 g	36%
of which Saturates	9.9 g	50%
Carbohydrate	33.6 g	13%
of which Sugars	22.8 g	25%
Fibre	0.4 g	
Protein	8 g	16%
Salt	0.57 g	10%

HANDLING &
STORAGE
INFORMATION

Directions For Use

Defrost: Remove all packaging and refrigerate for 12 hours. Shelf Life: After defrosting 2-4 days.

Storage Instructions

Keep frozen at or below -18°C, once defrosted store at 5°C ± 2°C

ORIGIN

Product Country of Origin/Place of United Kingdom

Provenance

CONTACT
INFORMATION

Address

Eatons Patisserie
17 Combe Road
Torquay
Devon
TQ2 8EJ
England

Technical Contact

Richard Magee
Quality Manager
qaco-ordinator@eatonspatisserie.co.uk

P: (Phone) 01626 361212 - Opt 3

P: (Phone) 01626 361212

Complaints Contact

Richard Magee
Quality Manager
qaco-ordinator@eatonspatisserie.co.uk

P: (Phone) 01626 361212 - Opt 3

Commercial Contact

Russell Eaton
Managing Director
russell.eaton@eatonspatisserie.co.uk

P: (Phone) 0782 5535543

The information on the [Erudus System](#) has been supplied by the manufacturers of the products and, whilst the owners of the Erudus System take steps to ensure the information is regularly updated, they give no warranty and no guarantee that the information is accurate. Product information and ingredients may change, please always read product labels carefully in addition to using the information provided by Erudus.

We do not accept liability for any inaccuracies or incorrect information contained on this site.
Please visit <http://www.erudus.com/terms-and-conditions> for full terms and conditions.