

Changed Aug 22, 2024 14:20

Reviewed Aug 22, 2024 14:20

Erudus ID 4eaff3ca8251465fafb05c2dc8014e3d

Version 1.0

PEPSI MAX CHERRY NO SUGAR COLA CANS 24 X 330ml

Carbonated Low Calorie Cherry Cola Flavoured Soft Drink With Sweeteners 24x

PRODUCT DESCRIPTION

Contains Caffeine Suitable for vegetarians and vegans

| | |
|---------------------------|----------------------------------|
| Brand | Britvic Soft Drinks Limited |
| Manufacturer Product Code | 200994 |
| Manufacturer Version | v1 |
| Number | |
| Product Type | Drink |
| Product Category | Carbonated & Soft Drinks |
| Storage Type | Ambient |
| Erudus ID | 4eaff3ca8251465fafb05c2dc8014e3d |
| Specification Type | Drinks |
| Inner Component GTIN | 87171259 |
| Outer Case GTIN | 04060800170255 |



INGREDIENTS

Ingredient Declaration

Carbonated Water, Colour (E150d), Sweeteners (Aspartame, Acesulfame K), Flavourings (including Caffeine), Acids (Phosphoric Acid, Citric Acid), Preservative (Potassium Sorbate). **Contains a Source of Phenylalanine**

ALLERGENS

Product Contains:

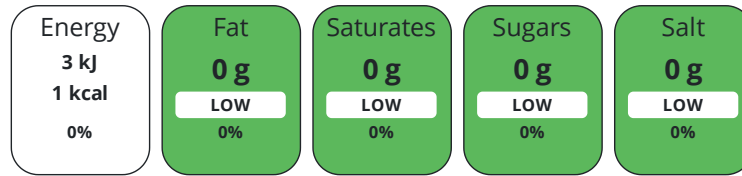
| | | | |
|---|----|--------------------------------------|----|
| Celery/Celeriac | No | Mustard | No |
| Cereals Containing Gluten | No | Nuts (Tree) | No |
| Barley | No | Almond nuts | No |
| Oats | No | Brazil nuts | No |
| Rye | No | Cashew nuts | No |
| Wheat (including Spelt and Khorasan) | No | Hazelnuts | No |
| Crustacea | No | Macadamia (Queensland) nuts | No |
| Eggs | No | Pecan nuts | No |
| Fish | No | Pistachio nuts | No |
| Lupin | No | Walnuts | No |
| Milk | No | Peanuts | No |
| Molluscs | No | Sesame Seeds | No |
| | | Soybeans | No |
| | | Sulphur Dioxide and Sulphites | No |

DIET SUITABILITY

| | | | |
|-------------------|--------------|------------------------|--------------|
| Vegan Diet | Suitable for | Vegetarian Diet | Suitable for |
| Halal Diet | No | Kosher Diet | No |

NUTRITIONAL
INFORMATION

Each 100g/ml portion contains:



of your reference intake.

Typical values per 100g/ml : Energy 1kcal / 3kJ

| Nutrient | per 100ml | RI per 100ml |
|---------------------------|-----------|--------------|
| Energy (kJ) | 3 kJ | 0% |
| Energy (kcal) | 0.6 kcal | 0% |
| Fat | 0 g | 0% |
| of which Saturates | 0 g | 0% |
| of which Mono-unsaturates | 0 g | |
| of which Polyunsaturates | 0 g | |
| Carbohydrate | 0 g | 0% |
| of which Sugars | 0 g | 0% |
| Protein | 0 g | 0% |
| Salt | 0 g | 0% |
| Sodium | 0 mg | |

HANDLING &
STORAGE
INFORMATION

Directions For Use

Ready to drink

Storage Instructions

Store in a cool and dry place

ORIGIN

Product Country of Origin/Place of United Kingdom

Provenance

MARKETING
INFORMATION

Marketing Description

Great Pepsi MAX taste with a refreshing Cherry twist.

CONTACT
INFORMATION

Address

Britvic Soft Drinks Limited
Breakspear Park
Breakspear Way
Hemel Hempstead
Hertfordshire
HP2 4TZ
United Kingdom

Technical Contact

Nikki Burton
Technical Specifications Manager | QSE
Nicola.Burton@britvic.com

P: (Phone) +44 (0) 7736747481

The information on the [Erudus System](#) has been supplied by the manufacturers of the products and, whilst the owners of the Erudus System take steps to ensure the information is regularly updated, they give no warranty and no guarantee that the information is accurate. Product information and ingredients may change, please always read product labels carefully in addition to using the information provided by Erudus.

We do not accept liability for any inaccuracies or incorrect information contained on this site.
Please visit <http://www.erudus.com/terms-and-conditions> for full terms and conditions.