

640259

Malted Wheat Small Baguette

Malted Wheat Small Baguette

PRODUCT DESCRIPTION

A fully baked malted wheat baguette on average 280mm in length. The product has 2 decorative top cuts and is supplied frozen for thawing and serving by the customer.

Brand	Lantmannen Unibake
Manufacturer Product Code	7003
Product Type	Food
Product Category	Bakery - General
Storage Type	Frozen
Erudus ID	d419d88b9ebb4a8d8b7ab77555468cdd
Specification Type	Legacy



Outer Case GTIN 5037173100386



INGREDIENTS

Ingredient Declaration

WHEAT Flour (with Calcium, Iron, Niacin, Thiamin), Water, Wholemeal WHEAT Flour, WHEAT Bran, Malted WHEAT Flakes (2.9%), Kibbled Malted WHEAT (2.0%), WHEAT Gluten, Yeast, Salt, Malted BARLEY Flour, Flour Treatment Agent (E300).

ALLERGENS

Product Contains:

Celery/Celериac	No	Mustard	No
Cereals Containing Gluten	Yes	Nuts (Tree)	No
Barley	Yes	Almond nuts	No
Oats	May Contain	Brazil nuts	No
Rye	May Contain	Cashew nuts	No
Wheat (including Spelt and Khorasan)	Yes	Hazelnuts	No
Gluten content <20ppm	No	Macadamia (Queensland) nuts	No
Crustacea	No	Pecan nuts	No
Eggs	No	Pistachio nuts	No
Fish	No	Walnuts	No
Lupin	No	Peanuts	No
Milk	No	Sesame Seeds	May Contain
Molluscs	No	Soybeans	No
		Sulphur Dioxide and Sulphites	No

Risk Source:

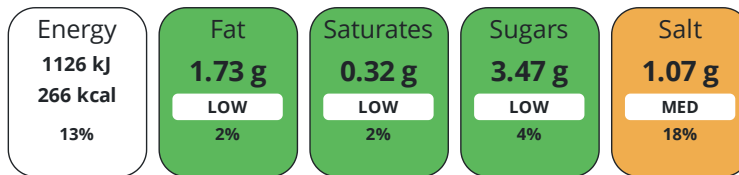
Additional Allergen Information

For allergens, including cereals containing gluten, see ingredients in CAPITALS. May contain sesame seeds.

DIET SUITABILITY

Suitable for Coeliacs	No	Halal Diet	Suitable for
Kosher Diet	No	Vegetarian Diet	Suitable for
Vegan Diet	Suitable for		

Each 100g/ml portion contains:



of your reference intake.

Typical values per 100g/ml : Energy 266kcal / 1126kJ

Nutrient	per 100g/ml	RI per 100g/ml	per 135g/ml serving	RI per 135g/ml serving
Energy (kJ)	1126 kJ	13%	1520.1 kJ	18%
Energy (kcal)	266 kcal	13%	359.1 kcal	18%
Fat	1.73 g	2%	2.3 g	3%
of which Saturates	0.32 g	2%	0.4 g	2%
of which Mono-unsaturates	0.41 g		0.6 g	
of which Polyunsaturates	0.93 g		1.3 g	
Carbohydrate	50.43 g	19%	68.1 g	26%
of which Sugars	3.47 g	4%	4.7 g	5%
Fibre	3.63 g		4.9 g	
Protein	10.33 g	21%	13.9 g	28%
Salt	1.07 g	18%	1.4 g	23%
Sodium	430 mg		580.5 mg	

Serving Size 135 g

Directions For Use

To defrost: Remove the required number of products from the box and lie flat. Defrost for approximately 1 hour at room temperature. Baking instructions - Preheat oven to 200C (gas 6). Bake defrosted product for approximately 3 minutes for a crisp crust.

Storage Instructions

Can be stored until best before date or stored at -18C or below. Once the rolls have been baked, we recommend that they are consumed within 4 hours. DO NOT REFREEZE ONCE THAWED.

Product Country of Origin/Place of United Kingdom

Provenance

Additional Origin Details

n/a

CONTACT
INFORMATION

Address

Lantmannen Unibake
Maidstone Road
Kingston
Milton Keynes
MK10 0BD
England

P: (Phone) 07780837112

Complaints Contact

Ursula Jaillet
Technical Coordinator
unibakeuk.technicalservices@lantmannen.com

Technical Contact

Inesa Jegeroviene
Senior Specifications Technologist
inesa.jegeroviene@lantmannen.com

P: (Phone) 07885418956

The information on the [Erudus System](#) has been supplied by the manufacturers of the products and, whilst the owners of the Erudus System take steps to ensure the information is regularly updated, they give no warranty and no guarantee that the information is accurate. Product information and ingredients may change, please always read product labels carefully in addition to using the information provided by Erudus.

We do not accept liability for any inaccuracies or incorrect information contained on this site.
Please visit <http://www.erudus.com/terms-and-conditions> for full terms and conditions.