

640254

# Le Pain Chic Part Baked White Petit Pain

Le Pain Chic Part Baked White Petit Pain

## PRODUCT DESCRIPTION

A white, part baked roll on average 120mm (approx. 4½") in length. The product has 1 decorative top cut and is supplied frozen for bake off by the customer.

<b>Brand</b>	Lantmannen Unibake
<b>Manufacturer Product Code</b>	7011
<b>Product Type</b>	Food
<b>Product Category</b>	Bakery - General
<b>Storage Type</b>	Frozen
<b>Erudus ID</b>	b40841462ffa4be4924634a3af459873
<b>Specification Type</b>	Legacy



**Outer Case GTIN** 5037173100317



## INGREDIENTS

### Ingredient Declaration

**WHEAT** Flour (with Calcium, Iron, Niacin, Thiamine), Water, Yeast, Salt, Flour Treatment Agent (E300).

## ALLERGENS

Product Contains:

<b>Celery/Celeriac</b>	No	<b>Mustard</b>	No
<b>Cereals Containing Gluten</b>	Yes	<b>Nuts (Tree)</b>	No
<b>Barley</b>	No	<b>Almond nuts</b>	No
<b>Oats</b>	No	<b>Brazil nuts</b>	No
<b>Rye</b>	No	<b>Cashew nuts</b>	No
<b>Wheat (including Spelt and Khorasan)</b>	Yes	<b>Hazelnuts</b>	No
<b>Gluten content &lt;20ppm</b>	No	<b>Macadamia (Queensland) nuts</b>	No
<b>Crustacea</b>	No	<b>Pecan nuts</b>	No
<b>Eggs</b>	No	<b>Pistachio nuts</b>	No
<b>Fish</b>	No	<b>Walnuts</b>	No
<b>Lupin</b>	No	<b>Peanuts</b>	No
<b>Milk</b>	No	<b>Sesame Seeds</b>	May Contain
<b>Molluscs</b>	No	<b>Soybeans</b>	No
		<b>Sulphur Dioxide and Sulphites</b>	No

Risk Source:

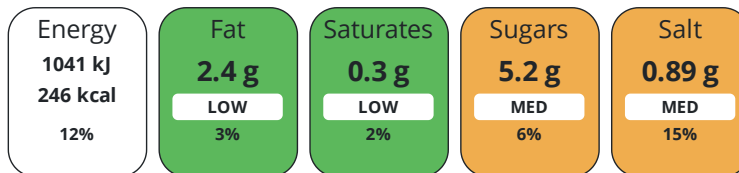
### Additional Allergen Information

For allergens, including cereals containing gluten, see ingredients in CAPITALS. May also contain traces of sesame seeds.

## DIET SUITABILITY

<b>Suitable for Coeliacs</b>	No	<b>Halal Diet</b>	Suitable for
<b>Kosher Diet</b>	No	<b>Vegetarian Diet</b>	Suitable for
<b>Vegan Diet</b>	Suitable for		

Each 100g/ml portion contains:



of your reference intake.

Typical values per 100g/ml : Energy 246kcal / 1041kJ

Nutrient	per 100g/ml	RI per 100g/ml	per 59g/ml serving	RI per 59g/ml serving
Energy (kJ)	1041 kJ	12%	614.2 kJ	7%
Energy (kcal)	246 kcal	12%	145.1 kcal	7%
Fat	2.4 g	3%	1.4 g	2%
of which Saturates	0.3 g	2%	0.2 g	1%
of which Mono-unsaturates	1.4 g		0.8 g	
of which Polyunsaturates	0.6 g		0.4 g	
Carbohydrate	46.4 g	18%	27.4 g	11%
of which Sugars	5.2 g	6%	3.1 g	3%
Fibre	4.1 g		2.4 g	
Protein	7.7 g	15%	4.5 g	9%
Salt	0.89 g	15%	0.5 g	8%
Sodium	356 mg		210 mg	
<b>Serving Size</b>	59 g			

**Directions For Use**

Baking Instructions - Preheat oven to 200 deg C (gas mark 6). Bake product from frozen for 8 - 10 minutes until golden brown. For ovens with steam injection facility, inject steam for 10 seconds at start of baking.

**Storage Instructions**

Can be stored until the best before date of stored at -18°C or below. DO NOT REFREEZE ONCE THAWED. Once the product has been baked, we recommend that it is consumed within 4 hours.

**Product Country of Origin/Place of** United Kingdom

**Provenance**

**Additional Origin Details**

n/a

CONTACT  
INFORMATION

Address

Lantmannen Unibake  
Maidstone Road  
Kingston  
Milton Keynes  
MK10 0BD  
England

P: (Phone) 07780837112

Complaints Contact

Ursula Jaillet  
Technical Coordinator  
unibakeuk.technicalservices@lantmannen.com

Technical Contact

Inesa Jedoroviene  
Senior Specifications Technologist  
inesa.jedoroviene@lantmannen.com

P: (Phone) 07885418956

The information on the [Erudus System](#) has been supplied by the manufacturers of the products and, whilst the owners of the Erudus System take steps to ensure the information is regularly updated, they give no warranty and no guarantee that the information is accurate. Product information and ingredients may change, please always read product labels carefully in addition to using the information provided by Erudus.

We do not accept liability for any inaccuracies or incorrect information contained on this site.  
Please visit <http://www.erudus.com/terms-and-conditions> for full terms and conditions.