

780063

# Schulstad Royal Danish Selection

Schulstad Royal Danish Selection (Multipack)

## PRODUCT DESCRIPTION

A selection of 3 Danish pastries: Cinnamon Swirl, Vanilla Crown and Apricot Crown. Includes 2 x135g icing bags

<b>Brand</b>	Lantmannen Unibake
<b>Manufacturer Product Code</b>	80511
<b>Product Type</b>	Food
<b>Product Category</b>	Bakery - General
<b>Storage Type</b>	Frozen
<b>Erudus ID</b>	c2e6858c813548f18c3ffcae38b10903
<b>Specification Type</b>	Legacy



## Cinnamon Swirl

<b>Manufacturer Component Code</b>	80511
<b>Outer Case GTIN</b>	05701536805118



## INGREDIENTS

### Ingredient Declaration

**DOUGH:** WHEAT Flour (with Calcium, Iron, Niacin, Thiamin), Vegetable Margarine (Palm Oil, Rapeseed Oil, Water, Emulsifier (E471), Salt, Acidity Regulator (E330), Flavouring), Water, Yeast, Egg (**EGG**, Salt), Sugar, Improver (**WHEAT** Flour). **FILLING:** Vegetable Margarine (Palm Oil, Rapeseed Oil, Water, Coconut Oil, Salt, Emulsifier (E471), Acidity Regulator (E330), Flavouring), Sugar, Water, Custard Powder (Sugar, Modified Potato Starch, Whey Powder (**MILK**), Skimmed **MILK** Powder, Coconut Oil, Stabilisers (E404, E450iii, E339ii, E451i), Glucose Syrup, Flavouring, Colour (E160aiii), Salt, **MILK** Protein), Sugar Syrup, Cinnamon (0.5%), **WHEAT** Flour, Cane Sugar Syrup. **TOPPING:** Glaze (Water, Glazing Agent (E953), Sugar, Gelling Agent (E406), Acidity Regulator (E330), Preservative (E202)).  
**ICING:** Sugar, Water, Glucose Syrup.

## ALLERGENS

Product Contains:

<b>Celery/Celeriac</b>	No	<b>Mustard</b>	No
<b>Cereals Containing Gluten</b>	Yes	<b>Nuts (Tree)</b>	May Contain
<b>Barley</b>	No	<b>Almond nuts</b>	May Contain
<b>Oats</b>	No	<b>Brazil nuts</b>	No
<b>Rye</b>	No	<b>Cashew nuts</b>	No
<b>Wheat (including Spelt and Khorasan)</b>	Yes	<b>Hazelnuts</b>	May Contain
<b>Gluten content &lt;20ppm</b>	No	<b>Macadamia (Queensland) nuts</b>	No
<b>Crustacea</b>	No	<b>Pecan nuts</b>	May Contain
<b>Eggs</b>	Yes	<b>Pistachio nuts</b>	No
<b>Fish</b>	No	<b>Walnuts</b>	May Contain
<b>Lupin</b>	No	<b>Peanuts</b>	No
<b>Milk</b>	Yes	<b>Sesame Seeds</b>	No
<b>Molluscs</b>	No	<b>Soybeans</b>	No
		<b>Sulphur Dioxide and Sulphites</b>	No

Risk Source:

### Additional Allergen Information

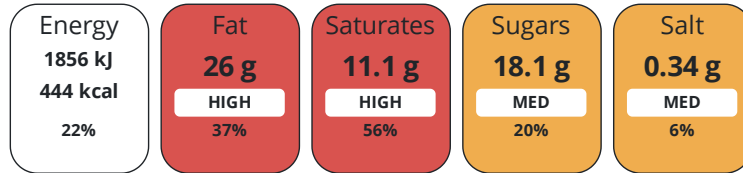
For allergens, including cereals containing gluten, see ingredients in CAPITALS. May contain traces of nuts.

#### DIET SUITABILITY

<b>Suitable for Coeliacs</b>	No	<b>Halal Diet</b>	No
<b>Kosher Diet</b>	No	<b>Vegetarian Diet</b>	No
<b>Vegan Diet</b>	No		

#### NUTRITIONAL INFORMATION

Each 100g/ml portion contains:



of your reference intake.

Typical values per 100g/ml : Energy 444kcal / 1856kJ

Nutrient	per 100g/ml	RI per 100g/ml	per 86.8g/ml serving	RI per 86.8g/ml serving
<b>Energy (kJ)</b>	1856 kJ	22%	1611 kJ	19%
<b>Energy (kcal)</b>	444 kcal	22%	385.4 kcal	19%
<b>Fat</b>	26 g	37%	22.6 g	32%
<b>of which Saturates</b>	11.1 g	56%	9.6 g	48%
<b>of which Mono-unsaturates</b>	10.2 g		8.9 g	
<b>of which Polyunsaturates</b>	3.65 g		3.2 g	
<b>Carbohydrate</b>	46.5 g	18%	40.4 g	16%
<b>of which Sugars</b>	18.1 g	20%	15.7 g	17%
<b>Fibre</b>	0.8 g		0.7 g	
<b>Protein</b>	5.7 g	11%	4.9 g	10%
<b>Salt</b>	0.34 g	6%	0.3 g	5%
<b>Sodium</b>	137 mg		118.9 mg	

**Serving Size** 86.8 g

#### HANDLING & STORAGE INFORMATION

##### Directions For Use

Bake from frozen for 18 minutes at 190°C.

##### Storage Instructions

Frozen < -18°C.

#### ORIGIN

**Product Country of Origin/Place of** United Kingdom

##### Provenance

# Apricot Crown

Manufacturer Component Code 80511  
 Outer Case GTIN 05701536805118



## INGREDIENTS

### Ingredient Declaration

**DOUGH:** WHEAT Flour (with Calcium, Iron, Niacin, Thiamin), Vegetable Margarine (Palm Oil, Rapeseed Oil, Water, Emulsifier (E471), Salt, Acidity Regulator (E330), Flavouring), Water, Yeast, Egg (**EGG**, Salt), Sugar, WHEAT Gluten, Improver (**WHEAT** Flour), Stabiliser (E417). **FILLING:** Apricot Filling (22.5%) (Dried Apricots, Sugar, Apricot Puree, Glucose Syrup, Water, Modified Maize Starch, Gelling Agent (E406), Flavouring, Preservative (E202), Salt, Elderberry Concentrate, Acidity Regulator (E330)), Sugar, Vegetable Margarine (Palm Oil, Rapeseed Oil, Water, Coconut Oil, Salt, Emulsifier (E471), Acidity Regulator (E330), Flavouring), Water, WHEAT Flour, ALMOND Powder, Flavouring. **TOPPING:** Glaze (Water, Glazing Agent (E953), Sugar, Gelling Agent (E406), Acidity Regulator (E330), Preservative (E202)).  
**ICING:** Sugar, Water, Glucose Syrup.

## ALLERGENS

Product Contains:

Celery/Celeriac	No	Mustard	No
Cereals Containing Gluten	Yes	Nuts (Tree)	Yes
Barley	No	Almond nuts	Yes
Oats	No	Brazil nuts	No
Rye	No	Cashew nuts	No
Wheat (including Spelt and Khorasan)	Yes	Hazelnuts	May Contain
Gluten content <20ppm	No	Macadamia (Queensland) nuts	No
Crustacea	No	Pecan nuts	May Contain
Eggs	Yes	Pistachio nuts	No
Fish	No	Walnuts	May Contain
Lupin	No	Peanuts	No
Milk	May Contain	Sesame Seeds	No
Molluscs	No	Soybeans	No
		Sulphur Dioxide and Sulphites	No

Risk Source:

### Additional Allergen Information

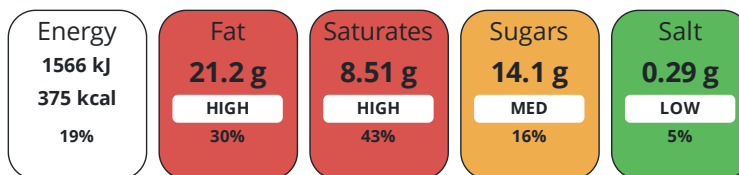
For allergens, including cereals containing gluten, see ingredients in CAPITALS. May contain traces of milk and nuts. Whey powder and skimmed milk powders are used within the factory.

## DIET SUITABILITY

Suitable for Coeliacs	No	Halal Diet	No
Kosher Diet	No	Vegetarian Diet	No
Vegan Diet	No		

## NUTRITIONAL INFORMATION

Each 100g/ml portion contains:



of your reference intake.

Typical values per 100g/ml : Energy 375kcal / 1566kJ

Nutrient	per 100g/ml	RI per 100g/ml	per 98.8g/ml serving	RI per 98.8g/ml serving
Energy (kJ)	1566 kJ	19%	1547.2 kJ	18%
Energy (kcal)	375 kcal	19%	370.5 kcal	19%
Fat	21.2 g	30%	20.9 g	30%
of which Saturates	8.51 g	43%	8.4 g	42%
of which Mono-unsaturates	8.07 g		8 g	
of which Polyunsaturates	3.58 g		3.5 g	
Carbohydrate	40.7 g	16%	40.2 g	15%
of which Sugars	14.1 g	16%	13.9 g	15%
Fibre	1.2 g		1.2 g	
Protein	4.7 g	9%	4.6 g	9%
Salt	0.29 g	5%	0.3 g	5%
Sodium	117 mg		115.6 mg	

**Serving Size** 98.8 g

**HANDLING &  
STORAGE  
INFORMATION**

**Directions For Use**

Bake from frozen for 18 minutes at 190°C.

**Storage Instructions**

Frozen < -18°C.

**ORIGIN**

**Product Country of Origin/Place of** United Kingdom

**Provenance**

# Vanilla Creme Crown

Manufacturer Component Code 80511  
 Outer Case GTIN 05701536805118



## INGREDIENTS

### Ingredient Declaration

**DOUGH:** WHEAT Flour (with Calcium, Iron, Niacin, Thiamin), Vegetable Margarine (Palm Oil, Rapeseed Oil, Water, Emulsifier (E471), Salt, Acidity Regulator (E330), Flavouring), Water, Yeast, Egg (**EGG**, Salt), Sugar, WHEAT Gluten, Improver (WHEAT Flour), Stabiliser (E417). **FILLING:** Water, Custard Powder (4.5%) (Sugar, Modified Potato Starch, Whey Powder (MILK), Skimmed MILK Powder, Coconut Oil, Stabilisers (E404, E450iii, E339ii, E451i), Glucose Syrup, Flavouring, Salt, MILK Protein, Colour (E160aiii)), Sugar, Vegetable Margarine (Palm Oil, Rapeseed Oil, Water, Coconut Oil, Salt, Emulsifier (E471), Acidity Regulator (E330), Flavouring), WHEAT Flour, ALMOND Powder, Flavouring. **TOPPING:** Glaze (Water, Glazing Agent (E953), Sugar, Gelling Agent (E406), Acidity Regulator (E330), Preservative (E202)), HAZELNUTS. **ICING:** Sugar, Water, Glucose Syrup.

## ALLERGENS

Product Contains:

Celery/Celeriac	No	Mustard	No
Cereals Containing Gluten	Yes	Nuts (Tree)	Yes
Barley	No	Almond nuts	Yes
Oats	No	Brazil nuts	No
Rye	No	Cashew nuts	No
Wheat (including Spelt and Khorasan)	Yes	Hazelnuts	Yes
Gluten content <20ppm	No	Macadamia (Queensland) nuts	No
Crustacea	No	Pecan nuts	May Contain
Eggs	Yes	Pistachio nuts	No
Fish	No	Walnuts	May Contain
Lupin	No	Peanuts	No
Milk	Yes	Sesame Seeds	No
Molluscs	No	Soybeans	No
		Sulphur Dioxide and Sulphites	No

Risk Source:

### Additional Allergen Information

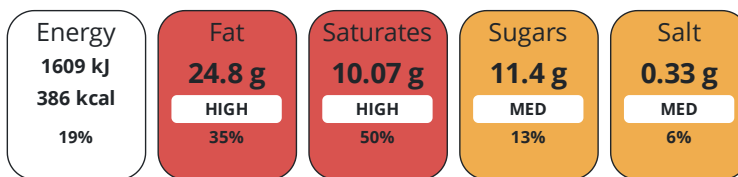
For allergens, including cereals containing gluten, see ingredients in CAPITALS. May contain traces of other nuts.

## DIET SUITABILITY

Suitable for Coeliacs	No	Halal Diet	No
Kosher Diet	No	Vegetarian Diet	Suitable for
Vegan Diet	No		

## NUTRITIONAL INFORMATION

Each 100g/ml portion contains:



of your reference intake.

Typical values per 100g/ml : Energy 386kcal / 1609kJ

Nutrient	per 100g/ml	RI per 100g/ml	per 98.8g/ml serving	RI per 98.8g/ml serving
Energy (kJ)	1609 kJ	19%	1589.7 kJ	19%
Energy (kcal)	386 kcal	19%	381.4 kcal	19%
Fat	24.8 g	35%	24.5 g	35%
of which Saturates	10.07 g	50%	9.9 g	50%
of which Mono-unsaturates	10.2 g		10.1 g	
of which Polyunsaturates	3.35 g		3.3 g	
Carbohydrate	35 g	13%	34.6 g	13%
of which Sugars	11.4 g	13%	11.3 g	13%
Fibre	1.6 g		1.6 g	
Protein	4.9 g	10%	4.8 g	10%
Salt	0.33 g	6%	0.3 g	5%
Sodium	130 mg		128.4 mg	
<b>Serving Size</b>	98.8 g			

**HANDLING & STORAGE INFORMATION**

**Directions For Use**

Bake from frozen for 18 minutes at 190°C.

**Storage Instructions**

Frozen < -18°C.

**ORIGIN**

**Product Country of Origin/Place of** United Kingdom

**Provenance**

**Address**

Lantmannen Unibake  
Maidstone Road  
Kingston  
Milton Keynes  
MK10 0BD  
England

**Technical Contact**

Inesa Jegoroviene  
Senior Specifications Technologist  
inesa.jegoroviene@lantmannen.com

**P: (Phone)** 07885418956

**P: (Phone)** 07780837112

**Complaints Contact**

Ursula Jaillet  
Technical Coordinator  
unibakeuk.technicalservices@lantmannen.com

**CONTACT INFORMATION**

The information on the [Erudus System](#) has been supplied by the manufacturers of the products and, whilst the owners of the Erudus System take steps to ensure the information is regularly updated, they give no warranty and no guarantee that the information is accurate. Product information and ingredients may change, please always read product labels carefully in addition to using the information provided by Erudus.

We do not accept liability for any inaccuracies or incorrect information contained on this site. Please visit <http://www.erudus.com/terms-and-conditions> for full terms and conditions.