

Changed Jan 09, 2024 12:29

Reviewed Jan 09, 2024 12:29

Erudus ID f46aae2f54df4cc0abd404639ec75b23

Version 2.1

This specification is published by [Erudus](#) for Country Range Group

# Strawberry Jam Portions

Strawberry Jam Portions 100x20g

## PRODUCT DESCRIPTION

N/A

Brand	Country Range Group
Label Own Label Code	A90804
Product Type	Food
Product Category	Preserves and Spreads
Storage Type	Ambient
Erudus ID	f46aae2f54df4cc0abd404639ec75b23
Specification Type	Generic



Outer Case GTIN 05023616429107



## INGREDIENTS

### Ingredient Declaration

Fructose-Glucose Syrup, Strawberry, Sugar, Gelling Agent (Pectin), Acidity Regulator (Citric Acid), Concentrated Elderberry Juice.

## ALLERGENS

Product Contains:

<b>Celery/Celериac</b>	No	<b>Mustard</b>	No
<b>Cereals Containing Gluten</b>	No	<b>Nuts (Tree)</b>	No
<b>Barley</b>	No	<b>Almond nuts</b>	No
<b>Oats</b>	No	<b>Brazil nuts</b>	No
<b>Rye</b>	No	<b>Cashew nuts</b>	No
<b>Wheat (including Spelt and Khorasan)</b>	No	<b>Hazelnuts</b>	No
<b>Crustacea</b>	No	<b>Macadamia (Queensland) nuts</b>	No
<b>Eggs</b>	No	<b>Pecan nuts</b>	No
<b>Fish</b>	No	<b>Pistachio nuts</b>	No
<b>Lupin</b>	No	<b>Walnuts</b>	No
<b>Milk</b>	No	<b>Peanuts</b>	No
<b>Molluscs</b>	No	<b>Sesame Seeds</b>	No
		<b>Soybeans</b>	No
		<b>Sulphur Dioxide and Sulphites</b>	No

## SUPPLEMENTARY INGREDIENT INFORMATION

<b>Palm Oil</b>	No	<b>Alcoholic Strength %Vol (ABV)</b>	0 % Vol
<b>Hydrogenated Vegetable Oil/Fat</b>	No		
<b>GM Protein/DNA</b>	No		

## ADDITIVES

Product Contains:

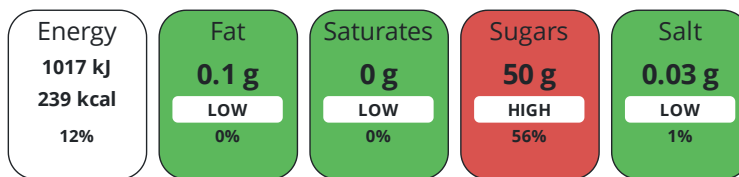
<b>Artificial Antioxidants</b>	No	<b>Artificial Flavourings</b>	No
<b>Artificial Colours</b>	No	<b>Artificial Preservatives</b>	No
<b>Artificial Flavour Enhancers</b>	Yes	<b>Artificial Sweeteners</b>	No

DIET  
SUITABILITY

<b>Vegan Diet</b>	Suitable for	<b>Vegetarian Diet</b>	Suitable for
<b>Halal Diet</b>	No	<b>Kosher Diet</b>	No

NUTRITIONAL  
INFORMATION

Each 100g/ml portion contains:



of your reference intake.

Typical values per 100g/ml : Energy 239kcal / 1017kJ

Nutrient	per 100g	RI per 100g	per 20g serving	RI per 20g serving
<b>Energy (kJ)</b>	1016.6 kJ	12%	203.3 kJ	2%
<b>Energy (kcal)</b>	239.3 kcal	12%	47.9 kcal	2%
<b>Fat</b>	0.1 g	0%	-	-
of which Saturates	0 g	0%	-	-
of which Mono-unsaturates	0 g	-	-	-
of which Polyunsaturates	0 g	-	-	-
<b>Carbohydrate</b>	59 g	23%	11.8 g	5%
of which Sugars	50 g	56%	10 g	11%
of which Polyols	0 g	-	-	-
of which Starch	9 g	-	1.8 g	-
<b>Fibre</b>	0.6 g	-	0.1 g	-
<b>Protein</b>	0.3 g	1%	0.1 g	0%
<b>Salt</b>	0.03 g	1%	-	-
<b>Sodium</b>	10 mg	-	2 mg	-
<b>Serving Size</b>	20 g			

VITAMINS AND  
MINERALS

Nutrient	per 100g	RI per 100g	per 20g serving	RI per 20g serving
<b>Vitamin A</b>	0 µg	0%	-	-
<b>Vitamin C</b>	10 mg	13%	2 mg	3%
<b>Folate/Folic Acid</b>	0 µg	0%	-	-
<b>Calcium</b>	12 mg	2%	2.4 mg	0%
<b>Iron</b>	0.2 mg	1%	-	-
<b>Zinc</b>	0.1 mg	1%	-	-

SUPPLEMENTARY  
NUTRITIONAL  
INFORMATION

<b>Cholesterol per 100 g/ml (UK/FR)</b>	0 g
<b>Trans Fats per 100 g/ml</b>	0 g
<b>Fat Percentage in Dry Matter per 100 g/ml</b>	0 %
<b>Non Milk Extrinsic Sugars per 100 g/ml</b>	50 g

HFSS (HIGH IN  
FAT, SALT AND  
SUGAR)

<b>HFSS Status</b>	No
--------------------	----

HANDLING & STORAGE INFORMATION

**Directions For Use**

N/A

**Storage Instructions**

Store In A Cool Dry Place Away From Direct Sunlight

**Shelf Life from Time of Production** 18 Days

ACCREDITATIONS/ CERTIFICATIONS/ ASSURANCE SCHEMES ORIGIN

**BRCGS Certified**

**Product Country of Origin/Place of** Italy

**Provenance**

PRODUCT CHARACTERISTICS

Standards Testing

**Do you undertake trend analysis of microbiological results?** No

**Is shelf life testing undertaken?** No

CONFIGURATION

Case Configuration

Inner Pack Configuration

**Total Quantity of Inner Components in Outer Case** 100 Units

**Count per Inner Component** 100

**Is the Outer Case Splittable?** No

PRODUCT WEIGHTS

Inner Component

**Variable Weight Consumer Item** No

**Inner Component Weight** 20 g

Outer Case

**Outer Case Gross Weight** 3 kg

**Outer Case Net Weight** 0.16 kg

PRODUCT DIMENSIONS

Inner Component

**Inner Component Depth** 56 mm

**Inner Component Width** 39 mm

**Inner Component Height** 18 mm

Outer Case

**Outer Case Depth** 240 mm

**Outer Case Width** 195 mm

**Outer Case Height** 115 mm

PALLET INFORMATION

**Quantity of Cases Per Pallet Layer** 24 Cases

**Pallet Height** 1.6 MTR

**Quantity of Layers Per Pallet** 14 Layers

**Pallet Gross Weight** 760 kg

**Quantity of Cases Per Pallet** 336 Cases

PACKAGING

Outer Case Packaging

Type	Materials	Weight	Recycled Plastic %	Recyclable	Returnable	Composite
Case	Paper/Cardboard	160 g	- %			

Transport Packaging

Type	Materials	Weight	Recycled Plastic %	Recyclable	Returnable	Composite
Other	Plastic	1800 g	- %		Yes	

OTHER INFORMATION

**Intrastat/Taric Code** n/a

**Manufacturer Comments**

No

CONTACT  
INFORMATION

ADDRESS

Country Range Group  
Accrington  
Lancs  
United Kingdom

P. (Phone) 0845 209 3777

The information on the [Erudus System](#) has been supplied by the manufacturers of the products and, whilst the owners of the Erudus System take steps to ensure the information is regularly updated, they give no warranty and no guarantee that the information is accurate. Product information and ingredients may change, please always read product labels carefully in addition to using the information provided by Erudus.

We do not accept liability for any inaccuracies or incorrect information contained on this site.  
Please visit <http://www.erudus.com/terms-and-conditions> for full terms and conditions.