

640004

Fletchers Extra Thick Sliced Wholemeal Sandwich Bread

Wholemeal Sandwich Bread

PRODUCT DESCRIPTION

A brown baked extra thick sliced sandwich wholemeal loaf, serve toasted with jams and marmalades as part of breakfast menus.

Brand	Kara Foodservice (Fletchers)
Manufacturer Product Code	F01274
Product Type	Food
Product Category	Bread and Bread Products
Storage Type	Frozen
Erudus ID	dcd5560456c94184b941d1f0c8249c82
Specification Type	Legacy



Inner Component GTIN	5010066109109
Outer Case GTIN	05010066112741



INGREDIENTS

Ingredient Declaration

Wholemeal **WHEAT** Flour, Water, Salt, Wheat Flour (**WHEAT** Flour, Calcium Carbonate, Niacin, Iron, Thiamin), Palm Oil, Yeast, Emulsifiers (E472e, E471), Preservative (E282), **SOYA** Flour, Spirit Vinegar, Flour Treatment Agent (E300).

ALLERGENS

Product Contains:

Celery/Celeriac	No	Mustard	No
Cereals Containing Gluten	Yes	Nuts (Tree)	No
Barley	May Contain	Almond nuts	No
Oats	No	Brazil nuts	No
Rye	No	Cashew nuts	No
Wheat (including Spelt and Khorasan)	Yes	Hazelnuts	No
Gluten content <20ppm	No	Macadamia (Queensland) nuts	No
Crustacea	No	Pecan nuts	No
Eggs	No	Pistachio nuts	No
Fish	No	Walnuts	No
Lupin	No	Peanuts	No
Milk	No	Sesame Seeds	No
Molluscs	No	Soybeans	Yes
		Sulphur Dioxide and Sulphites	No

Risk Source:

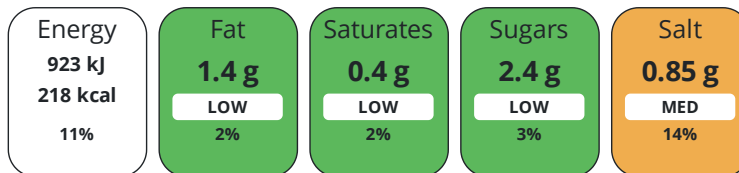
Additional Allergen Information

For allergens (including cereals containing gluten), see ingredients in bold.

DIET SUITABILITY

Suitable for Coeliacs	No	Halal Diet	No
Kosher Diet	No	Vegetarian Diet	Suitable for
Vegan Diet	Suitable for		

Each 100g/ml portion contains:



of your reference intake.

Typical values per 100g/ml : Energy 218kcal / 923kj

Nutrient	per 100g/ml	RI per 100g/ml	per 800g/ml serving	RI per 800g/ml serving
Energy (kJ)	923 kJ	11%	7384 kJ	88%
Energy (kcal)	218 kcal	11%	1744 kcal	87%
Fat	1.4 g	2%	11.2 g	16%
of which Saturates	0.4 g	2%	3.2 g	16%
of which Mono-unsaturates	0.53 g		4.2 g	
of which Polyunsaturates	0.38 g		3 g	
Carbohydrate	38.2 g	15%	305.6 g	118%
of which Sugars	2.4 g	3%	19.2 g	21%
of which Polyols	0 g		-	
of which Starch	35.8 g		286.4 g	
Fibre	7.1 g		56.8 g	
Protein	9.7 g	19%	77.6 g	155%
Salt	0.85 g	14%	6.8 g	113%
Sodium	338 mg		2704 mg	

Serving Size 800 g

HANDLING &
STORAGE
INFORMATION

Directions For Use

To defrost: Remove from case and leave in pack at room temperature for approximately 3 hours, or until fully defrosted. Once defrosted, store in a sealed pack in a cool, dry place away from direct sunlight and use within 5 days.

Storage Instructions

Store Frozen at -18°C or below. Keep frozen until use. Once defrosted do not refreeze.

ORIGIN

Product Country of Origin/Place of United Kingdom

Provenance

Additional Origin Details

N/A

Address

Kara Foodservice (Fletchers)

Park Seventeen

Moss Lane

Whitefield

Manchester

M45 8FJ

England

P: (Phone) 0161 766 7471

CONTACT
INFORMATION

The information on the [Erudus System](#) has been supplied by the manufacturers of the products and, whilst the owners of the Erudus System take steps to ensure the information is regularly updated, they give no warranty and no guarantee that the information is accurate. Product information and ingredients may change, please always read product labels carefully in addition to using the information provided by Erudus.

We do not accept liability for any inaccuracies or incorrect information contained on this site.
Please visit <http://www.erudus.com/terms-and-conditions> for full terms and conditions.