

630981

# Americana 5" Gourmet Kaiser Bun

Kaiser Bun

## PRODUCT DESCRIPTION

A pre-sliced premium burger bun produced using a unique recipe, with a firmer texture and traditional Sourdough flavour. Topped with semolina and finished with a Kaiser cut. Supplied frozen.

|                                  |                                  |
|----------------------------------|----------------------------------|
| <b>Brand</b>                     | Lantmannen Unibake               |
| <b>Manufacturer Product Code</b> | 223392                           |
| <b>Product Type</b>              | Food                             |
| <b>Product Category</b>          | Bakery - General                 |
| <b>Storage Type</b>              | Frozen                           |
| <b>Erudus ID</b>                 | 74526dc9969b4dda878eb2e3889b3bfa |
| <b>Specification Type</b>        | Legacy                           |
| <b>Inner Component GTIN</b>      | 5037173101710                    |
| <b>Outer Case GTIN</b>           | 05038910010920                   |



## INGREDIENTS

### Ingredient Declaration

**WHEAT** Flour (with Calcium, Iron, Niacin, Thiamin), Water, Vegetable Oils (Palm and Rapeseed), Yeast, Sugar, **WHEAT** Semolina, Salt, Fermented **WHEAT** Flour, **WHEAT** Gluten, Potato Flakes, Preservative (E282), Flour Treatment Agent (E300).

## ALLERGENS

Product Contains:

|   |     |                                      |             |
|---|-----|--------------------------------------|-------------|
| <b>Celery/Celeriac</b>                      | No  | <b>Mustard</b>                       | No          |
| <b>Cereals Containing Gluten</b>            | Yes | <b>Nuts (Tree)</b>                   | May Contain |
| <b>Barley</b>                               | No  | <b>Almond nuts</b>                   | May Contain |
| <b>Oats</b>                                 | No  | <b>Brazil nuts</b>                   | No          |
| <b>Rye</b>                                  | No  | <b>Cashew nuts</b>                   | May Contain |
| <b>Wheat (including Spelt and Khorasan)</b> | Yes | <b>Hazelnuts</b>                     | May Contain |
| <b>Gluten content &lt;20ppm</b>             | No  | <b>Macadamia (Queensland) nuts</b>   | No          |
| <b>Crustacea</b>                            | No  | <b>Pecan nuts</b>                    | No          |
| <b>Eggs</b>                                 | No  | <b>Pistachio nuts</b>                | No          |
| <b>Fish</b>                                 | No  | <b>Walnuts</b>                       | No          |
| <b>Lupin</b>                                | No  | <b>Peanuts</b>                       | No          |
| <b>Milk</b>                                 | No  | <b>Sesame Seeds</b>                  | May Contain |
| <b>Molluscs</b>                             | No  | <b>Soybeans</b>                      | No          |
|   |     | <b>Sulphur Dioxide and Sulphites</b> | No          |

Risk Source:

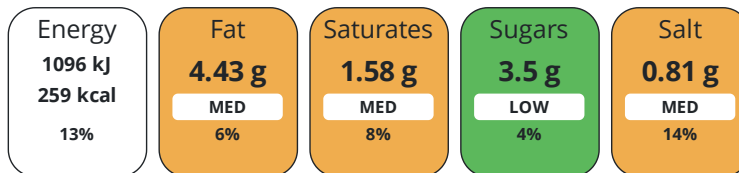
### Additional Allergen Information

For allergens, including cereals containing gluten, see ingredients in CAPITALS. May also contain sesame seeds and nuts.

## DIET SUITABILITY

|                              |              |                        |              |
|------------------------------|--------------|------------------------|--------------|
| <b>Suitable for Coeliacs</b> | No           | <b>Halal Diet</b>      | Suitable for |
| <b>Kosher Diet</b>           | No           | <b>Vegetarian Diet</b> | Suitable for |
| <b>Vegan Diet</b>            | Suitable for |                        |              |

Each 100g/ml portion contains:



of your reference intake.

Typical values per 100g/ml : Energy 259kcal / 1096kJ

| Nutrient                  | per 100g/ml | RI per 100g/ml | per 89g/ml serving | RI per 89g/ml serving |
|---------------------------|-------------|----------------|--------------------|-----------------------|
| Energy (kJ)               | 1096 kJ     | 13%            | 975.4 kJ           | 12%                   |
| Energy (kcal)             | 259 kcal    | 13%            | 230.5 kcal         | 12%                   |
| Fat                       | 4.43 g      | 6%             | 3.9 g              | 6%                    |
| of which Saturates        | 1.58 g      | 8%             | 1.4 g              | 7%                    |
| of which Mono-unsaturates | 1.56 g      |                | 1.4 g              |                       |
| of which Polyunsaturates  | 1.08 g      |                | 1 g                |                       |
| Carbohydrate              | 45.09 g     | 17%            | 40.1 g             | 15%                   |
| of which Sugars           | 3.5 g       | 4%             | 3.1 g              | 3%                    |
| Fibre                     | 1.6 g       |                | 1.4 g              |                       |
| Protein                   | 8.97 g      | 18%            | 8 g                | 16%                   |
| Salt                      | 0.81 g      | 14%            | 0.7 g              | 12%                   |
| Sodium                    | 324 mg      |                | 288.4 mg           |                       |
| <b>Serving Size</b>       | 89 g        |                |                    |                       |

**Directions For Use**

To defrost: Remove the packs required from the box and lie flat. Allow to thaw at room temperature for approx 1 hour. The cut surface may be toasted until golden brown.

**Storage Instructions**

Can be stored until the best before date if stored at -18°C or below. Once thawed, store in a cool dry place in a sealed bag and use within 4 days. Do not store defrosted products at chilled temperatures as this will accelerate staling. DO NOT REFREEZE ONCE DEFROSTED.

**Product Country of Origin/Place of** United Kingdom

**Provenance**

**Additional Origin Details**

n/a

CONTACT  
INFORMATION

Address

Lantmannen Unibake  
Maidstone Road  
Kingston  
Milton Keynes  
MK10 0BD  
England

P: (Phone) 07780837112

Complaints Contact

Ursula Jaillet  
Technical Coordinator  
unibakeuk.technicalservices@lantmannen.com

Technical Contact

Inesa Jegeroviene  
Senior Specifications Technologist  
inesa.jegeroviene@lantmannen.com

P: (Phone) 07885418956

The information on the [Erudus System](#) has been supplied by the manufacturers of the products and, whilst the owners of the Erudus System take steps to ensure the information is regularly updated, they give no warranty and no guarantee that the information is accurate. Product information and ingredients may change, please always read product labels carefully in addition to using the information provided by Erudus.

We do not accept liability for any inaccuracies or incorrect information contained on this site.  
Please visit <http://www.erudus.com/terms-and-conditions> for full terms and conditions.