

# Salted Caramel Blondie

Salted Caramel Blondie (1x18pp) 1x18

## PRODUCT DESCRIPTION

A sweet white chocolate blondie topped with a salted milk toffee sauce, finished with moist toffee sponge cubes, a sprinkling of crunchy butter crumble and a feathering of white chocolate icing in varying proportions. Pre-portioned into 18 square portions and packed 1 traybake per outer.

<b>Brand</b>	CDT Sidoli (Welshpool) Ltd
<b>Manufacturer Product Code</b>	53753
<b>Product Type</b>	Food
<b>Product Category</b>	Desserts
<b>Storage Type</b>	Frozen
<b>Erudus ID</b>	d4f1932739bd4d97bcd21b14b13f5b29
<b>Specification Type</b>	Bakery Products
<b>Outer Case GTIN</b>	5015091537538



## INGREDIENTS

### Ingredient Declaration

Brown sugar, WHEAT flour (with added calcium, niacin, iron, thiamin), white chocolate (11%) (sugar, cocoa butter, whole MILK powder, lactose (MILK), whey powder (MILK), emulsifier (SOYA lecithin), vanilla extract), margarine (palm oil, rapeseed oil, water, emulsifier (mono- and diglycerides of fatty acids), natural flavouring), butter (MILK), EGG, water, golden syrup, sugar, fondant (sugar, dried glucose syrup), MILK replacer (whey powder (MILK), cream powder (MILK)), rapeseed oil, glucose syrup, white chocolate pieces (sugar, cocoa butter, whole MILK powder, emulsifier (SOYA lecithin), natural vanilla flavouring), salt, modified maize starch, MILK protein, natural flavouring, raising agents (diphosphates, potassium carbonates), emulsifiers (mono-and diglycerides of fatty acids, sodium stearoyl-2-lactylate), WHEAT protein, palm kernel oil, colour blend (BARLEY malt extract, curcumin), palm stearin oil, WHEAT starch, flavouring.

## ALLERGENS

Product Contains:

<b>Celery/Celeriac</b>	No	<b>Mustard</b>	No
<b>Cereals Containing Gluten</b>	Yes	<b>Nuts (Tree)</b>	May Contain
<b>Barley</b>	Yes (<20ppm)	<b>Almond nuts</b>	May Contain
<b>Oats</b>	No	<b>Brazil nuts</b>	No
<b>Rye</b>	No	<b>Cashew nuts</b>	No
<b>Wheat (including Spelt and Khorasan)</b>	Yes	<b>Hazelnuts</b>	May Contain
<b>Crustacea</b>	No	<b>Macadamia (Queensland) nuts</b>	No
<b>Eggs</b>	Yes	<b>Pecan nuts</b>	May Contain
<b>Fish</b>	No	<b>Pistachio nuts</b>	May Contain
<b>Lupin</b>	No	<b>Walnuts</b>	May Contain
<b>Milk</b>	Yes	<b>Peanuts</b>	No
<b>Molluscs</b>	No	<b>Sesame Seeds</b>	No
		<b>Soybeans</b>	Yes
		<b>Sulphur Dioxide and Sulphites</b>	No

Risk Source:

<b>Tree Nuts (Risk Source)</b>	Factory	<b>Almond nuts (Risk Source)</b>	Factory
<b>Hazelnuts (Risk Source)</b>	Factory	<b>Pecan nuts (Risk Source)</b>	Factory
<b>Pistachio nuts (Risk Source)</b>	Factory	<b>Walnuts (Risk Source)</b>	Factory

**Allergen Statement On Pack**

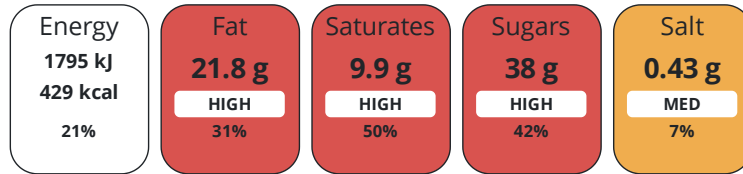
MADE IN A FACTORY THAT ALSO HANDLES THE FOLLOWING ALLERGEN: NUTS.

DIET  
SUITABILITY

<b>Vegan Diet</b>	No	<b>Vegetarian Diet</b>	Suitable for
<b>Halal Diet</b>	No	<b>Kosher Diet</b>	No

NUTRITIONAL  
INFORMATION

Each 100g/ml portion contains:



of your reference intake.

Typical values per 100g/ml : Energy 429kcal / 1795kJ

Nutrient	per 100g	RI per 100g	per 125g serving	RI per 125g serving
<b>Energy (kJ)</b>	1795 kJ	21%	2243.8 kJ	27%
<b>Energy (kcal)</b>	429 kcal	21%	536.3 kcal	27%
<b>Fat</b>	21.8 g	31%	27.3 g	39%
<b>of which Saturates</b>	9.9 g	50%	12.4 g	62%
<b>Carbohydrate</b>	56 g	22%	70 g	27%
<b>of which Sugars</b>	38 g	42%	47.5 g	53%
<b>Fibre</b>	0.8 g		1 g	
<b>Protein</b>	3.5 g	7%	4.4 g	9%
<b>Salt</b>	0.43 g	7%	0.5 g	8%

<b>Serving Size</b>	125 g
<b>Number of Servings</b>	18 Servings

HANDLING &  
STORAGE  
INFORMATION

**Directions For Use**

HANDLING INSTRUCTIONS: Defrost prior to serving. Once defrosted store in a cool dry place in an airtight container. Consume within 3 days of defrost. Do not re-freeze once defrosted. DEFROSTING INSTRUCTIONS: Whole: Remove all packaging, place on a serving platter, cover and defrost at ambient for approximately 6 hours. Portion: Place the portion on a plate, cover and defrost at ambient for approximately 2 hours.

**Storage Instructions**

At or below -18°C

**Storage Instructions After Opening**

Once defrosted store in a cool dry place in an airtight container.

ORIGIN

<b>Product Country of Origin/Place of Provenance</b>	United Kingdom
--	----------------

CONTACT  
INFORMATION

Address

CDT Sidoli (Welshpool) Ltd  
Henfaes Lane  
Welshpool  
Powys  
SY21 7BE  
Wales

P: (Phone) 01938 555234

Complaints Contact

Hera Gottschalk  
Customers Service  
customer\_service@sidoli.co.uk

P: (Phone) 01935 555234

Technical Contact

Michele Fischetti  
Technical Manager  
mfischetti@sidoli.co.uk

P: (Phone) 01938 555234

Commercial Contact

Lorna Gries  
Sales Manager  
lgries@sidoli.co.uk

P: (Phone) 01938 555234

The information on the [Erudus System](#) has been supplied by the manufacturers of the products and, whilst the owners of the Erudus System take steps to ensure the information is regularly updated, they give no warranty and no guarantee that the information is accurate. Product information and ingredients may change, please always read product labels carefully in addition to using the information provided by Erudus.

We do not accept liability for any inaccuracies or incorrect information contained on this site.  
Please visit <http://www.erudus.com/terms-and-conditions> for full terms and conditions.