

170020

Base Risotto 200g x 12

Base Risotto 12x200g

PRODUCT DESCRIPTION

Cooked rice in a risotto style sauce flavoured with mixed herbs

Brand	Scheff Foods Ltd
Manufacturer Product Code	RISV200
Product Type	Food
Product Category	Pasta, Rice and Noodles
Storage Type	Frozen
Erudus ID	188ecc9c537742e6bfc470a694aef288
Specification Type	Legacy
Outer Case GTIN	5055775107695



INGREDIENTS

Ingredient Declaration

Cooked Rice (38%) (Water), Water, Onion, **SOYA** Milk, Margarine (Palm Oil, Rapeseed Oil, Water, Salt, Emulsifier E471, Natural Colourings (E160b(ii), E100), Natural Flavouring), Rapeseed Oil, Garlic Puree, Cornflour, Salt, Lemon Juice, Yeast Extract (Salt), Fennel Powder, White Pepper, Mixed Herbs (Parsley, Marjoram, Chervil, Thyme)

ALLERGENS

Product Contains:

Celery/Celeriac	No	Mustard	No
Cereals Containing Gluten	No	Nuts (Tree)	May Contain
Barley	No	Almond nuts	May Contain
Oats	No	Brazil nuts	No
Rye	No	Cashew nuts	May Contain
Wheat (including Spelt and Khorasan)	No	Hazelnuts	May Contain
Gluten content <20ppm	Yes	Macadamia (Queensland) nuts	No
Crustacea	No	Pecan nuts	May Contain
Eggs	No	Pistachio nuts	No
Fish	No	Walnuts	May Contain
Lupin	No	Peanuts	No
Milk	No	Sesame Seeds	No
Molluscs	No	Soybeans	Yes
		Sulphur Dioxide and Sulphites	No

Risk Source:

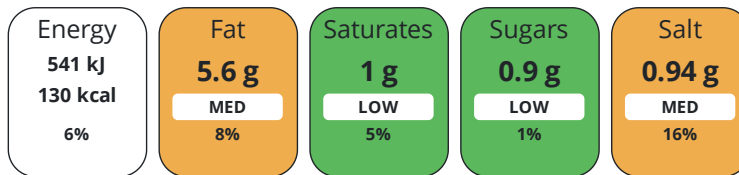
Additional Allergen Information

Contains Soya

DIET SUITABILITY

Suitable for Coeliacs	Yes	Halal Diet	No
Kosher Diet	No	Vegetarian Diet	Suitable for
Vegan Diet	Suitable for		

Each 100g/ml portion contains:



of your reference intake.

Typical values per 100g/ml : Energy 130kcal / 541kJ

Nutrient	per 100g/ml	RI per 100g/ml	per 200g/ml serving	RI per 200g/ml serving
Energy (kJ)	541 kJ	6%	1082 kJ	13%
Energy (kcal)	130 kcal	7%	260 kcal	13%
Fat	5.6 g	8%	11.2 g	16%
of which Saturates	1 g	5%	2 g	10%
of which Mono-unsaturates	2.4 g		4.8 g	
of which Polyunsaturates	1.4 g		2.8 g	
Carbohydrate	17.8 g	7%	35.6 g	14%
of which Sugars	0.9 g	1%	1.8 g	2%
of which Starch	16.7 g		33.4 g	
Fibre	0.6 g		1.2 g	
Protein	2.1 g	4%	4.2 g	8%
Salt	0.94 g	16%	1.9 g	32%
Sodium	374 mg		748 mg	
Serving Size	200 g			

HANDLING &
STORAGE
INFORMATION

Directions For Use

From Frozen (1900 Watt Microwave), remove from tray and place on a serving dish. Defrost for 6 minutes. Reheat on full power for 2 minutes. Ensure the product is thoroughly heated before serving.

Storage Instructions

-18°C or below, Once defrosted do not re-freeze

ORIGIN

Product Country of Origin/Place of United Kingdom

Provenance

Address

Scheff Foods Ltd
Halfords Park
Halfords Lane
Smethwick
B66 1EL
England

P. (Phone) 0121 565 2280

CONTACT
INFORMATION

The information on the [Erudus System](#) has been supplied by the manufacturers of the products and, whilst the owners of the Erudus System take steps to ensure the information is regularly updated, they give no warranty and no guarantee that the information is accurate. Product information and ingredients may change, please always read product labels carefully in addition to using the information provided by Erudus.

We do not accept liability for any inaccuracies or incorrect information contained on this site.
Please visit <http://www.erudus.com/terms-and-conditions> for full terms and conditions.