

Changed Jan 06, 2025 17:24

Reviewed Jan 06, 2025 17:24

Erudus ID 36a8dee90c4b401990ad2070ac8c6763

Version 3.0

Gluten Free Barista Oat Professional 1L x 12

Barista Oat Professional 12x1x1033g

PRODUCT DESCRIPTION

Gluten free oat drink

Brand	Moma Foods Ltd
Manufacturer Product Code	MOMPMB111
Effective Date	Jan 6, 2025
Product Type	Drink
Product Category	Drinks - General
Storage Type	Ambient
Erudus ID	36a8dee90c4b401990ad2070ac8c6763
Specification Type	Drinks



Inner Component GTIN	5060146373371
Inner Pack Product Code	N/A
Outer Case GTIN	05060146373388



INGREDIENTS

Ingredient Declaration

Oat base (water, oats 14%), rapeseed oil, calcium carbonate, acidity regulator (dipotassium phosphate), salt, vitamins (B2, D, B12) potassium iodide

ALLERGENS

Product Contains:

Celery/Celeriac	No	Mustard	No
Cereals Containing Gluten	Yes (<20ppm)	Nuts (Tree)	No
Barley	No	Almond nuts	No
Oats	Yes (<20ppm)	Brazil nuts	No
Rye	No	Cashew nuts	No
Wheat (including Spelt and Khorasan)	No	Hazelnuts	No
Crustacea	No	Macadamia (Queensland) nuts	No
Eggs	No	Pecan nuts	No
Fish	No	Pistachio nuts	No
Lupin	No	Walnuts	No
Milk	No	Peanuts	No
Molluscs	No	Sesame Seeds	No
		Soybeans	No
		Sulphur Dioxide and Sulphites	No

Additional Allergen Information

Oats are legally considered to be 'cereals containing gluten'. However, oats that are not contaminated with other cereals containing gluten (e.g., wheat, barley, and rye) and analysed to contain less than 20mg/kg (ppm) of gluten (as sold), may be labelled with the ingredient claim: 'gluten-free'. The

FREE FROM CLAIMS

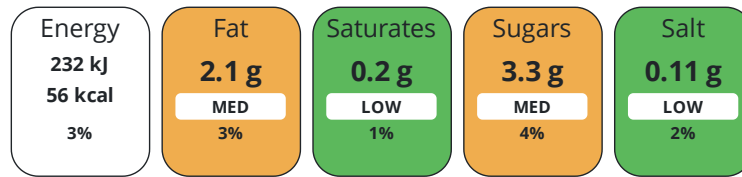
Free From Barley	Yes	Free From Mustard	Yes
Free From Celery/Celeriac	Yes	Free From Nuts	Yes
Free From Crustacea	Yes	Free From Peanuts	Yes
Free From Eggs	Yes	Free From Rye	Yes
Free From Fish	Yes	Free From Sesame	Yes
Gluten-Free	Yes	Free From Soybeans	Yes
Free From Lactose	Yes	Free From Sulphur Dioxide	Yes
Free From Lupin	Yes	Very Low Gluten	Yes
Free From Milk	Yes	Free From Wheat	Yes
Free From Molluscs	Yes		

DIET SUITABILITY

Vegan Diet	Suitable for	Vegetarian Diet	Suitable for
Halal Diet	Suitable for	Kosher Diet	No

NUTRITIONAL INFORMATION

Each 100g/ml portion contains:



of your reference intake.

Typical values per 100g/ml : Energy 56kcal / 232kJ

Nutrient	per 100g	RI per 100g
Energy (kJ)	232 kJ	3%
Energy (kcal)	56 kcal	3%
Fat	2.1 g	3%
of which Saturates	0.2 g	1%
Carbohydrate	8.3 g	3%
of which Sugars	3.3 g	4%
Fibre	< 0.5 g	
Protein	0.8 g	2%
Salt	0.11 g	2%

HANDLING & STORAGE INFORMATION

Directions For Use

in hot drink and cereals

Storage Instructions

Ambient (but cold storage recommended for better taste and optimal performance).

Storage Instructions After Opening

store chilled

ORIGIN

Product Country of Origin/Place of Provenance United Kingdom

CONTACT
INFORMATION

Address

Moma Foods Ltd
122 Arlington Road
Camden
London
NW1 7HP
United Kingdom

Commercial Contact

Mark Taylor
Head of Out of Home
mark@momafoods.co.uk

~~P: (Phone)~~ Mobile: +44 (0) 7415 374 309

The information on the [Erudus System](#) has been supplied by the manufacturers of the products and, whilst the owners of the Erudus System take steps to ensure the information is regularly updated, they give no warranty and no guarantee that the information is accurate. Product information and ingredients may change, please always read product labels carefully in addition to using the information provided by Erudus.

We do not accept liability for any inaccuracies or incorrect information contained on this site.
Please visit <http://www.erudus.com/terms-and-conditions> for full terms and conditions.