

ICING SUGAR 4X3KG POLY

Icing Sugar

PRODUCT DESCRIPTION

A free flowing blend of our finest white powdered sugar and maize starch. Icing Sugar sets when mixed with liquid to form a glaze. It is a staple of professional kitchens, where it is used as a decorative coating on baked goods such as cakes and buns. It can also be used for decorative dusting.

Brand	Tate & Lyle Sugars
Manufacturer Product Code	413758
Product Type	Food
Product Category	Sugar and Sweeteners
Storage Type	Ambient
Erudus ID	8ded83a64ee54e53ad629dd4b849f5e9
Specification Type	Generic
Inner Component GTIN	5010115826643
Outer Case GTIN	05010115126644



INGREDIENTS

Ingredient Declaration

Icing Sugar (97%), Maize Starch

ALLERGENS

Product Contains:

Celery/Celery	No	Mustard	No
Cereals Containing Gluten	No	Nuts (Tree)	No
Barley	No	Almond nuts	No
Oats	No	Brazil nuts	No
Rye	No	Cashew nuts	No
Wheat (including Spelt and Khorasan)	No	Hazelnuts	No
Crustacea	No	Macadamia (Queensland) nuts	No
Eggs	No	Pecan nuts	No
Fish	No	Pistachio nuts	No
Lupin	No	Walnuts	No
Milk	No	Peanuts	No
Molluscs	No	Sesame Seeds	No
		Soybeans	No
		Sulphur Dioxide and Sulphites	No

Additional Allergen Information

Allergen Status: This product is Allergen free as defined by European Regulation (EU) 1169/2011 and European Commission Regulation (EC) 41/2009 (Gluten ≤ 20ppm).

FREE FROM CLAIMS

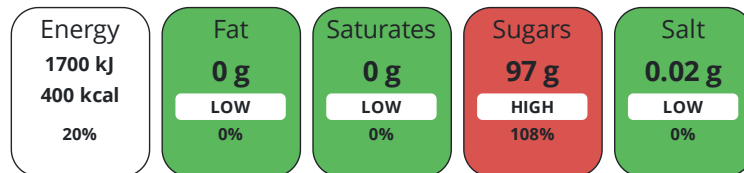
Free From Barley	Yes	Free From Mustard	Yes
Free From Celery/Celeriac	Yes	Free From Nuts	Yes
Free From Crustacea	Yes	Free From Oats	Yes
Free From Eggs	Yes	Free From Peanuts	Yes
Free From Fish	Yes	Free From Rye	Yes
Gluten-Free	Yes	Free From Sesame	Yes
Free From Lactose	Yes	Free From Soybeans	Yes
Free From Lupin	Yes	Free From Sulphur Dioxide	Yes
Free From Milk	Yes	Very Low Gluten	Yes
Free From Molluscs	Yes	Free From Wheat	Yes

DIET SUITABILITY

Vegan Diet	Suitable for	Vegetarian Diet	Suitable for
Halal Diet	Suitable for	Kosher Diet	Suitable for

NUTRITIONAL INFORMATION

Each 100g/ml portion contains:



of your reference intake.

Typical values per 100g/ml : Energy 400kcal / 1700kJ

Nutrient	per 100g	RI per 100g	per 5g of prepared product
Energy (kJ)	1700 kJ	20%	-
Energy (kcal)	400 kcal	20%	-
Fat	0 g	0%	-
of which Saturates	0 g	0%	-
Carbohydrate	100 g	38%	-
of which Sugars	97 g	108%	-
Fibre	0 g	-	-
Protein	0 g	0%	-
Salt	0.02 g	0%	-
Sodium	6.8 mg	-	-

Source of Nutritional Information Calculation from known/accepted datasets

HANDLING & STORAGE INFORMATION

Directions For Use

ready to eat

Storage Instructions

Storage Conditions: Store in dry, ambient conditions, avoiding extremes in temperature and humidity.

ORIGIN

Product Country of Origin/Place of United Kingdom

Provenance

Additional Origin Details

Place of Production/ Packaging: This product is produced in the UK using raw cane sugar of non-UK Origin. Origin of primary production: Cane sugar is non-UK origin (See Country of origin statement)

CONTACT
INFORMATION

Address

Tate & Lyle Sugars
Factory Road
Factory Road, Silvertown
Silvertown
E16 2EW
United Kingdom

P: (Phone) +44 207-540-1512

Technical Contact

Carol Griffiths
European Quality Systems Manager
QualityDocs-EU@asr-group.com

P: (Phone) +44 758-307-3925

The information on the [Erudus System](#) has been supplied by the manufacturers of the products and, whilst the owners of the Erudus System take steps to ensure the information is regularly updated, they give no warranty and no guarantee that the information is accurate. Product information and ingredients may change, please always read product labels carefully in addition to using the information provided by Erudus.

We do not accept liability for any inaccuracies or incorrect information contained on this site.
Please visit <http://www.erudus.com/terms-and-conditions> for full terms and conditions.