

Changed Dec 20, 2024 11:06

Reviewed Dec 20, 2024 11:06

Erudus ID fd096b53c44e40e587fa5ed473718c91

Version 2.2

# Savoury Bake (Field and Forrest)

Savoury Bake 30x187g

## PRODUCT DESCRIPTION

A delicious savoury bake encased in a puff pastry

Brand	Lewis Pie & Pasty Company
Manufacturer Product Code	FO100003
Product Type	Food
Product Category	Pastry
Storage Type	Frozen
Erudus ID	fd096b53c44e40e587fa5ed473718c91
Specification Type	Generic
Inner Component GTIN	5036587030975



## INGREDIENTS

### Ingredient Declaration

Water, WHEAT Flour [WHEAT Flour, Calcium, Niacin, Iron, Thiamin], Margarine [Rapeseed Oil, Sustainable Palm Oil, Water, Salt], Oyster Mushroom (10%), Rusk [WHEAT Flour (WHEAT Flour, Calcium, Iron, Niacin, Thiamin), Salt], Shortening [Sustainable Palm Oil, Rapeseed Oil], Onion, Seasoning [Salt, Potato Starch, Dextrose, Rice Flour, Dehydrated Apple, Emulsifier: E450 & E451, Preservative: E223 (SULPHITES), Sage, Parsley, Acidity Regulator: E331, Antioxidant: E301, Spice Extracts], OAT Flakes, Rapeseed Oil, Bouillon [Salt, Potato Starch, Yeast Extract, Flavourings, Maltodextrin, Sugar, Colour E150c, Onion Powder, Caramelised Sugar Powder, Sunflower Oil], Glaze [WHEAT Protein, Maltodextrin, Dextrose, Colour: E160a], Salt, Modified Maize Starch, Parsley, Stabiliser: E461

## ALLERGENS

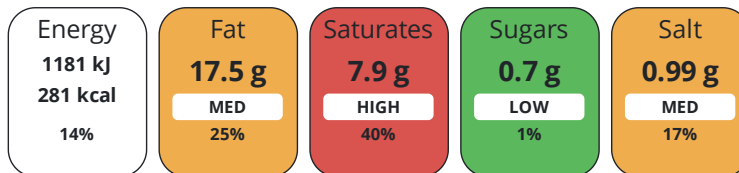
Product Contains:

<b>Celery/Celeriac</b>	No	<b>Mustard</b>	No
<b>Cereals Containing Gluten</b>	Yes	<b>Nuts (Tree)</b>	No
<b>Barley</b>	No	<b>Almond nuts</b>	No
<b>Oats</b>	Yes	<b>Brazil nuts</b>	No
<b>Rye</b>	No	<b>Cashew nuts</b>	No
<b>Wheat (including Spelt and Khorasan)</b>	Yes	<b>Hazelnuts</b>	No
<b>Crustacea</b>	No	<b>Macadamia (Queensland) nuts</b>	No
<b>Eggs</b>	No	<b>Pecan nuts</b>	No
<b>Fish</b>	No	<b>Pistachio nuts</b>	No
<b>Lupin</b>	No	<b>Walnuts</b>	No
<b>Milk</b>	No	<b>Peanuts</b>	No
<b>Molluscs</b>	No	<b>Sesame Seeds</b>	No
		<b>Soybeans</b>	No
		<b>Sulphur Dioxide and Sulphites</b>	Yes
<b>Vegan Diet</b>	Suitable for	<b>Vegetarian Diet</b>	Suitable for
<b>Halal Diet</b>	No	<b>Kosher Diet</b>	No

## DIET SUITABILITY

NUTRITIONAL  
INFORMATION

Each 100g/ml portion contains:



of your reference intake.

Typical values per 100g/ml : Energy 281kcal / 1181kJ

Nutrient	per 100g	RI per 100g
Energy (kJ)	1181 kJ	14%
Energy (kcal)	281 kcal	14%
Fat	17.5 g	25%
of which Saturates	7.9 g	40%
Carbohydrate	28.7 g	11%
of which Sugars	0.7 g	1%
Fibre	1.6 g	
Protein	4.9 g	10%
Salt	0.99 g	17%

HANDLING &  
STORAGE  
INFORMATION

**Directions For Use**

Product must be baked before consumption. For best results cook from frozen. Remove all packaging (except foil if present). Place on a baking tray in the centre of a pre-heated oven at 210°C / 190°C Fan / Gas Mark 6 for 35 minutes. Ensure piping hot before serving and do not reheat. These instructions are guidelines only as appliances may vary.

**Storage Instructions**

Keep Frozen

ORIGIN

**Product Country of Origin/Place of** United Kingdom

**Provenance**

Address

Lewis Pie & Pasty Company  
Units 3-6 Abergelly Road  
Swansea West Business Park, Fforestfach  
Swansea  
SA5 4DY  
England

P: (Phone) 01792 579908

CONTACT  
INFORMATION

The information on the [Erudus System](#) has been supplied by the manufacturers of the products and, whilst the owners of the Erudus System take steps to ensure the information is regularly updated, they give no warranty and no guarantee that the information is accurate. Product information and ingredients may change, please always read product labels carefully in addition to using the information provided by Erudus.

We do not accept liability for any inaccuracies or incorrect information contained on this site.  
Please visit <http://www.erudus.com/terms-and-conditions> for full terms and conditions.