

Changed Jul 15, 2024 10:28

Reviewed Jul 15, 2024 10:28

Erudus ID c3b01e299cfc421396a118c8ff12462f

Version 2.0

# RASPBERRY & WHITE CHOCOLATE BLONDIE

Raspberry & White Chocolate Blondie 1x18 Pre-portioned

## PRODUCT DESCRIPTION

A sweet white chocolate Blondie with random pieces of raspberries, topped with a drizzle of white chocolate fondant and freeze-dried raspberry pieces. This Blondie is pre-portioned into 18 square portions and packed 1 per outer.

Brand	CDT Sidoli (Welshpool) Ltd
Manufacturer Product Code	53752
Manufacturer Version	1
Number	
Product Type	Food
Product Category	Desserts
Storage Type	Frozen
Erudus ID	c3b01e299cfc421396a118c8ff12462f
Specification Type	Bakery Products
Outer Case GTIN	5015091537521



## INGREDIENTS

### Ingredient Declaration

Brown sugar, WHEAT flour (with added calcium, niacin, iron, thiamin), white chocolate (15%) (sugar, cocoa butter, whole MILK powder, lactose (MILK), whey powder (MILK), emulsifier (SOYA lecithin), vanilla extract), raspberries (9%), butter (MILK), margarine (palm oil, rapeseed oil, water, emulsifier (mono- and diglycerides of fatty acids), natural flavouring), EGG, fondant (sugar, dried glucose syrup), glucose syrup, white chocolate pieces (0.8%) (sugar, cocoa butter, whole MILK powder, emulsifier (SOYA lecithin), natural vanilla flavouring), sugar, modified maize starch, raspberry crumb, natural flavouring, palm kernel oil, palm stearin oil

### Ingredient Statements

MADE IN A FACTORY THAT ALSO HANDLES THE FOLLOWING ALLERGEN: NUTS.

## ALLERGENS

Product Contains:

Celery/Celeriac	No	Mustard	No
Cereals Containing Gluten	Yes	Nuts (Tree)	May Contain
Barley	No	Almond nuts	May Contain
Oats	No	Brazil nuts	No
Rye	No	Cashew nuts	No
Wheat (including Spelt and Khorasan)	Yes	Hazelnuts	May Contain
Crustacea	No	Macadamia (Queensland) nuts	No
Eggs	Yes	Pecan nuts	May Contain
Fish	No	Pistachio nuts	May Contain
Lupin	No	Walnuts	May Contain
Milk	Yes	Peanuts	No
Molluscs	No	Sesame Seeds	No
		Soybeans	Yes
		Sulphur Dioxide and Sulphites	No

Risk Source:

<b>Tree Nuts (Risk Source)</b>	Factory	<b>Almond nuts (Risk Source)</b>	Factory
<b>Hazelnuts (Risk Source)</b>	Factory	<b>Pecan nuts (Risk Source)</b>	Factory
<b>Pistachio nuts (Risk Source)</b>	Factory	<b>Walnuts (Risk Source)</b>	Factory

### Allergen Statement On Pack

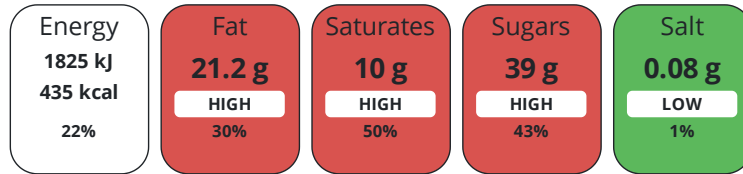
MADE IN A FACTORY THAT ALSO HANDLES THE FOLLOWING ALLERGEN: NUTS.

DIET  
SUITABILITY

<b>Vegan Diet</b>	No	<b>Vegetarian Diet</b>	Suitable for
<b>Halal Diet</b>	No	<b>Kosher Diet</b>	No

NUTRITIONAL  
INFORMATION

Each 100g/ml portion contains:



of your reference intake.

Typical values per 100g/ml : Energy 435kcal / 1825kJ

Nutrient	per 100g	RI per 100g	per 97g serving	RI per 97g serving	per 97g of prepared product
<b>Energy (kJ)</b>	1825 kJ	22%	1770.3 kJ	21%	-
<b>Energy (kcal)</b>	435 kcal	22%	422 kcal	21%	-
<b>Fat</b>	21.2 g	30%	20.6 g	29%	-
<b>of which Saturates</b>	10 g	50%	9.7 g	49%	-
<b>Carbohydrate</b>	59 g	23%	57.2 g	22%	-
<b>of which Sugars</b>	39 g	43%	37.8 g	42%	-
<b>Fibre</b>	1.3 g		1.3 g		-
<b>Protein</b>	3.8 g	8%	3.7 g	7%	-
<b>Salt</b>	0.08 g	1%	0.1 g	2%	-

<b>Serving Size</b>	97 g
<b>Number of Servings</b>	18 Servings

**Source of Nutritional Information** Calculation from known/accepted datasets

HANDLING &  
STORAGE  
INFORMATION

### Directions For Use

HANDLING INSTRUCTIONS: Defrost prior to serving. DEFROSTING INSTRUCTIONS: Whole: Remove all packaging from frozen, place on a serving platter, cover and defrost at ambient for approximately 6 hours. Portion: Remove a portion from frozen, place on a plate, cover and defrost at ambient for approximately 2 hours.

### Storage Instructions

At or below -18°C (0°F)

### Storage Instructions After Opening

HANDLING INSTRUCTIONS: Once defrosted store in a cool dry place in an airtight container. Consume within 3 days of defrost. Do not re-freeze, once defrosted.

ORIGIN

**Product Country of Origin/Place of Provenance** United Kingdom

CONTACT  
INFORMATION

Address

CDT Sidoli (Welshpool) Ltd  
Henfaes Lane  
Welshpool  
Powys  
SY21 7BE  
Wales

P: (Phone) 01938 555234

Complaints Contact

Hera Gottschalk  
Customers Service  
customer\_service@sidoli.co.uk

P: (Phone) 01935 555234

Technical Contact

Michele Fischetti  
Technical Manager  
mfischetti@sidoli.co.uk

P: (Phone) 01938 555234

Commercial Contact

Lorna Gries  
Sales Manager  
lgries@sidoli.co.uk

P: (Phone) 01938 555234

The information on the [Erudus System](#) has been supplied by the manufacturers of the products and, whilst the owners of the Erudus System take steps to ensure the information is regularly updated, they give no warranty and no guarantee that the information is accurate. Product information and ingredients may change, please always read product labels carefully in addition to using the information provided by Erudus.

We do not accept liability for any inaccuracies or incorrect information contained on this site.  
Please visit <http://www.erudus.com/terms-and-conditions> for full terms and conditions.