

Changed Sep 12, 2024 07:54

Reviewed Sep 12, 2024 07:54

Erudus ID 1280173d211140f5b062ee8ac96475c2

Version 5.0

780053

Portuguese Egg Custard Tart

Portuguese Egg Custard Tart

PRODUCT DESCRIPTION

A light, crisp pastry case with a sweet egg custard filling that gives a caramelised finish. A Portuguese speciality. Product Supplied frozen, part baked.

Brand	Lantmannen Unibake
Manufacturer Product Code	5790088802 (PYB02)
Product Type	Food
Product Category	Cakes and Tarts
Storage Type	Frozen
Erudus ID	1280173d211140f5b062ee8ac96475c2
Specification Type	Bakery Products



Outer Case GTIN 15604621302738



INGREDIENTS

Ingredient Declaration

Filling (63%): Sugar, Water, MILK, EGG Yolk, WHEAT Flour, EGG White, Dried MILK, Maize Starch, Thickener (E415). Pastry (37%): WHEAT Flour, Vegetable Margarine (Vegetable Oils and Fats (Palm, Sunflower, Rapeseed, Coconut), Water, Emulsifier (E471), Acidity Regulators (E270, E330), Salt, Antioxidant (E307)), Water, Salt.

ALLERGENS

Product Contains:

Celery/Celery	No	Mustard	No
Cereals Containing Gluten	Yes	Nuts (Tree)	May Contain
Barley	No	Almond nuts	No
Oats	No	Brazil nuts	No
Rye	No	Cashew nuts	No
Wheat (including Spelt and Khorasan)	Yes	Hazelnuts	May Contain
Crustacea	No	Macadamia (Queensland) nuts	No
Eggs	Yes	Pecan nuts	No
Fish	No	Pistachio nuts	No
Lupin	No	Walnuts	No
Milk	Yes	Peanuts	No
Molluscs	No	Sesame Seeds	May Contain
		Soybeans	May Contain
		Sulphur Dioxide and Sulphites	No

Risk Source:

Tree Nuts (Risk Source)	Raw Material	Hazelnuts (Risk Source)	Raw Material
Sesame Seeds (Risk Source)	Factory	Soybeans (Risk Source)	Raw Material

Allergen Statement On Pack

May also contain traces of nuts, sesame seeds and soya.

Additional Allergen Information

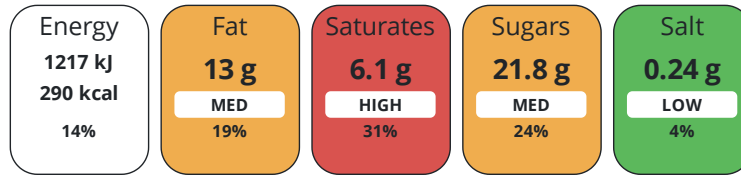
May also contain traces of nuts, sesame seeds and soya.

DIET SUITABILITY

Vegan Diet	No	Vegetarian Diet	Suitable for
Halal Diet	No	Kosher Diet	No

NUTRITIONAL INFORMATION

Each 100g/ml portion contains:



of your reference intake.

Typical values per 100g/ml : Energy 290kcal / 1217kJ

Nutrient	per 100g	RI per 100g	per 58g serving	RI per 58g serving
Energy (kJ)	1217 kJ	14%	705.9 kJ	8%
Energy (kcal)	290 kcal	15%	168.2 kcal	8%
Fat	13 g	19%	7.5 g	11%
of which Saturates	6.1 g	31%	3.5 g	18%
of which Mono-unsaturates	4.6 g		2.7 g	
of which Polyunsaturates	1.6 g		0.9 g	
Carbohydrate	38.4 g	15%	22.3 g	9%
of which Sugars	21.8 g	24%	12.6 g	14%
Fibre	1 g		0.6 g	
Protein	4.4 g	9%	2.6 g	5%
Salt	0.24 g	4%	0.1 g	2%
Sodium	90 mg		52.2 mg	

Serving Size 58 g

Source of Nutritional Information Manufacturers analysis

HANDLING & STORAGE INFORMATION

Directions For Use

Bake in a pre-heated oven at 180°C for 16 minutes. Leave to cool and display. (Core product temperature must reach 70C for 2 minutes).

Storage Instructions

Keep frozen at -18°C or below.

Storage Instructions After Opening

Shelf life after baking 24 hours

ORIGIN

Product Country of Origin/Place of Portugal

Provenance

Additional Origin Details

N/A

CONTACT
INFORMATION

Address

Lantmannen Unibake
Maidstone Road
Kingston
Milton Keynes
MK10 0BD
England

P: (Phone) 07780837112

Complaints Contact

Ursula Jaillet
Technical Coordinator
unibakeuk.technicalservices@lantmannen.com

Technical Contact

Inesa Jegeroviene
Senior Specifications Technologist
inesa.jegeroviene@lantmannen.com

P: (Phone) 07885418956

The information on the [Erudus System](#) has been supplied by the manufacturers of the products and, whilst the owners of the Erudus System take steps to ensure the information is regularly updated, they give no warranty and no guarantee that the information is accurate. Product information and ingredients may change, please always read product labels carefully in addition to using the information provided by Erudus.

We do not accept liability for any inaccuracies or incorrect information contained on this site.
Please visit <http://www.erudus.com/terms-and-conditions> for full terms and conditions.